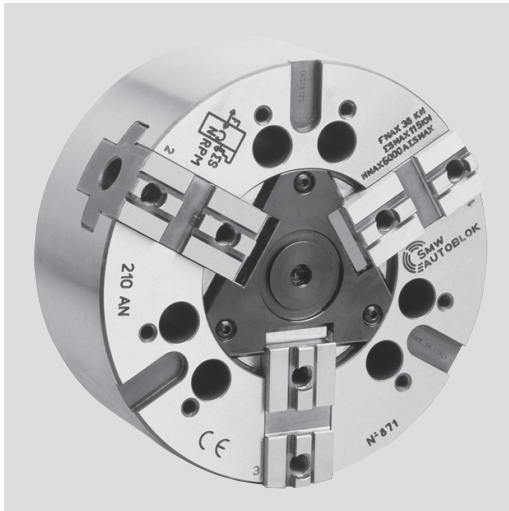


- Closed center
- 2 and 3 jaws (4 jaws only Ø 400 mm)



Application/customer benefits

- For chucking parts
- Suitable for vertical machines
- Tongue & groove master jaws for heavy or very high profile special top jaws

AN-C: TONGUE & GROOVE master jaws (American Standard)

Technical features

- Gripping force transmission via wedge hook
- Case hardened body to assure greatest precision and long chuck life

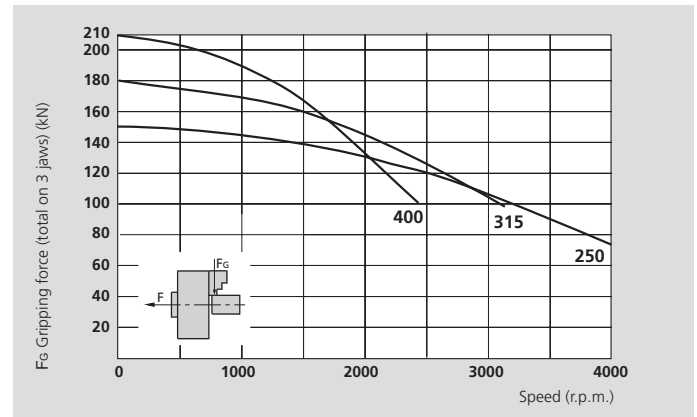
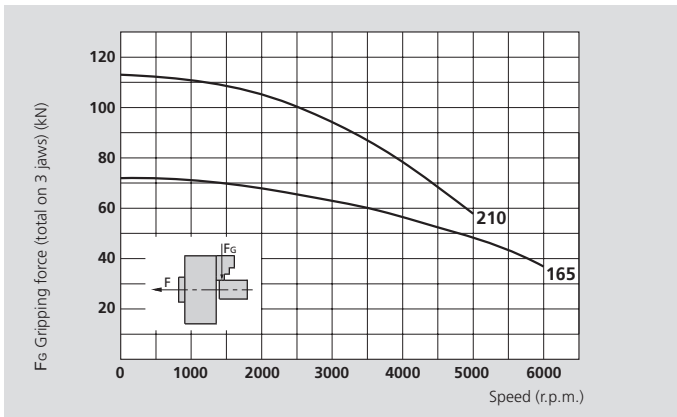
Standard equipment

2, 3 or 4 jaw chuck
Mounting bolts

Ordering example

3 jaw chuck AN-C 250 / Z220
or
2 jaw chuck AN-C 315 / A8

Actual gripping force diagrams



The data in the diagrams refer to 3 jaw chucks, newly maintained according to their service manuals using SMW-AUTOBLOK K05 grease. The static and dynamic gripping forces have been measured using standard soft top jaws, placed in a position not exceeding the outer diameter of the chuck.

⚠ Safety advice / danger of damage:

When using taller / heavier jaws and / or clamping on a bigger diameter reduce draw pull / rotating speed accordingly.

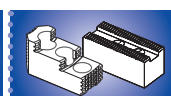
Technical data

SMW-AUTOBLOK Type		AN-C 165		AN-C 210		AN-C 250		AN-C 315		AN-C 400		
Number of jaws		2	3	2	3	2	3	2	3	2	3	4
Radial jaw stroke	mm	3.6		4.4		5		6.3		7		
Axial piston stroke	mm	17		21		24		30		33		
Max. draw pull*	kN	17	25	25	38	33	50	40	60	50	70	70
Max. gripping force*	kN	50	72	75	115	100	150	120	180	150	210	210
Max. speed	r.p.m.	6000		5000		4000		3200		2400		2000
Weight (without top jaws)	kg	10		19.5		33		57		84		
Moment of inertia	kg·m ²	0.034		0.11		0.27		0.70		1.6		
Recommended actuating cylinders		Type	SIN-S 100	SIN-S 100 / 125	SIN-S 125 / 150	SIN-S 125 / 150	SIN-S 125 / 150	SIN-S 150 / 175		SIN-S 150 / 175		

* For internal clamping reduce the draw pull by 30%.



SMW-AUTOBLOK 438



SMW-AUTOBLOK 440



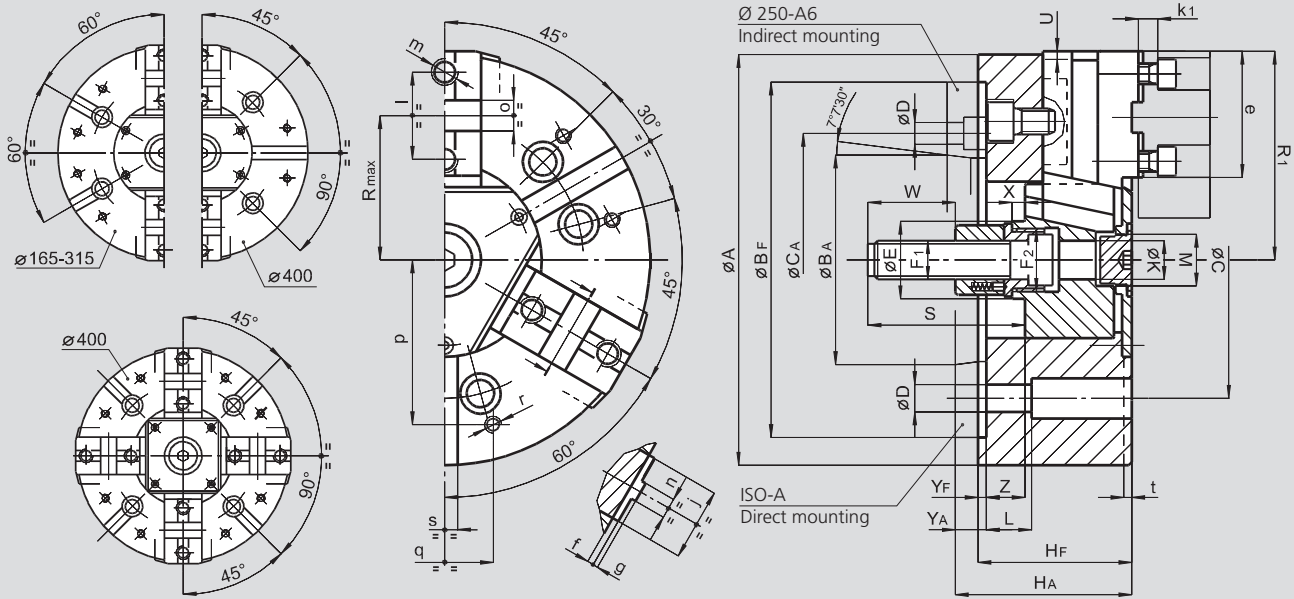
SMW-AUTOBLOK 297

High precision power chucks \varnothing 165 - 400 mm

AN-C

- Closed center
- 2 and 3 jaws (4 jaws only \varnothing 400 mm)

TONGUE & GROOVE



Subject to technical changes.
For more detailed information please ask our customer service.

SMW-AUTOBLOK Type			AN-C 165		AN-C 210		AN-C 250			AN-C 315		AN-C 400	
Mounting			Z140	A5	Z170	A6	Z220	A6	A8	Z220	A8	Z300	A11
	A	mm	165		210		254			315		390	
	BF/BAH6	mm	140	82.563	170	106.375	220	106.375	139.719	220	139.719	300	196.869
	C	mm	104.8		133.4		171.4	–	171.4	171.4		235	
	CA	mm	–	–	–	–	–	133.4	–	–	–	–	–
	D	mm	11.5		13.5		17	13.5	17	17		21	
	E	mm	32		41		47			47		86	
	F1	mm	M16		M20		M24			M24		M24	
	F2	mm	M24 x 2		M32 x 1.5		M38 x 1.5			M38 x 1.5		M75 x 2	
	HF/HA	mm	71	81	85	97	95	114	109	105	119	116	131
	K	mm	17		20		25			25		65	
	L	mm	23		32		28			38		54	
	M	mm	M24 x 1.5		M32 x 1.5		M32 x 1.5			M38 x 1.5		M68 x 2	
Chuck open	R1	mm	83		105		128			158		196	
Max.	R	mm	56		72		88			105		133.5	
	S	mm	104		97		103			103		105	
Jaw stroke	U	mm	3.6		4.4		5			6.3		7	
	W	mm	52		55		60			60		60	
	X	mm	17		8		8			8		8	
	YF/YA	mm	5	15	5	17	5	24	19	5	19	6	21
Max. / min.	Z	mm	17 / 0		21 / 0		24 / 0			30 / 0		33 / 0	
	e	mm	54		71		77			99		116	
	f	mm	4		4		4			4		7	
	g	mm	3		3		3			3		3	
	j	mm	30		36		45			45		62	
	k1	mm	10		11		12			12		14	
	l	mm	38		44.4		54			63.5		76.2	
	m	mm	M10		M12		M16			M16		M20	
	n h8	mm	7.94		7.94		12.70			12.70		12.70	
	o H7	mm	12.68		12.68		19.03			19.03		19.03	
	p	mm	65		80		102			120		150	
	q	mm	36		45		60			60		80	
	r	mm	M8		M8		M10			M10		M12	
	s	mm	16		16		16			16		20	
	t	mm	5		5		5			5		5	