

Overview Pipe

Customer's OCTG product:

- Straight pipe
- Bent pipe

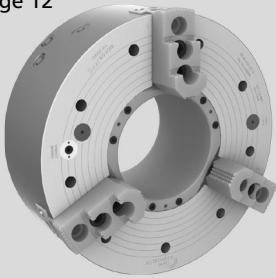
CHUCK

APPLICATION

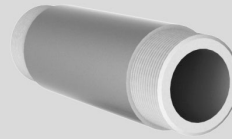
OCTG PRODUCT

CUSTOMER BENEFITS

BB-N
Page 12

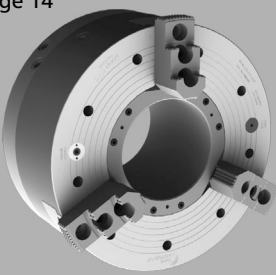


Threading of straight pipe with the original SMW Big Bore Type BB-N.

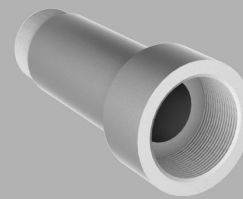


- **Quick jaw movement** more pipe per hour
- Can be used for other work pieces besides piping
- O.D. and I.D. clamping

BB-N-ES
Page 14

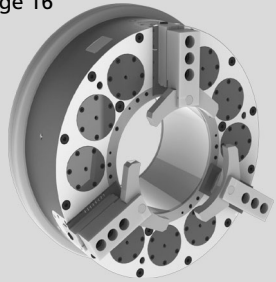


Threading of straight pipe with upset ends with the original SMW Big Bore Type BB-N-ES.

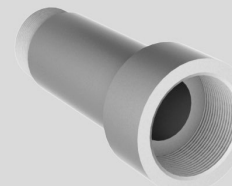
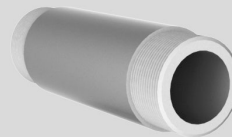


- **Quick jaw movement** more pipe per hour
- Large jaw stroke for easy loading of pipe and less danger of damaging threads when unloading

BB-SC
Page 16

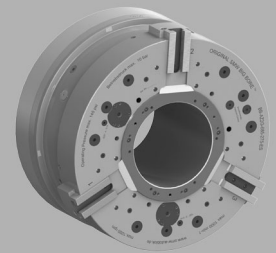


High production **spring clamp** chuck for threading of straight pipe with or without upset ends with the original SMW Big Bore Type BB-SC.

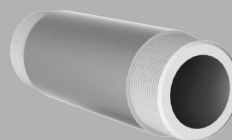
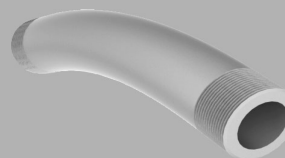


- **Full jaw stroke in 2 seconds** for highest productivity
- Fully sealed/low maintenance for highest availability of the machine
- Safe clamping of pipe even in longer machining processes with spring clamp technology

BB-AZ2G
Page 18

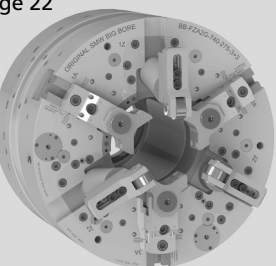


Threading of straight and bent pipe with the original SMW Big Bore Type BB-AZ2G.

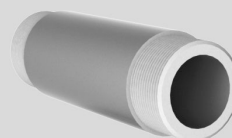
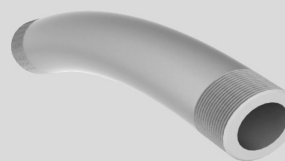


- **Self centering or compensating clamping** for universal use
- Quick jaw movement
- External centering device needed when used in compensating mode
- O.D. clamping only

BB-FZA2G
Page 22



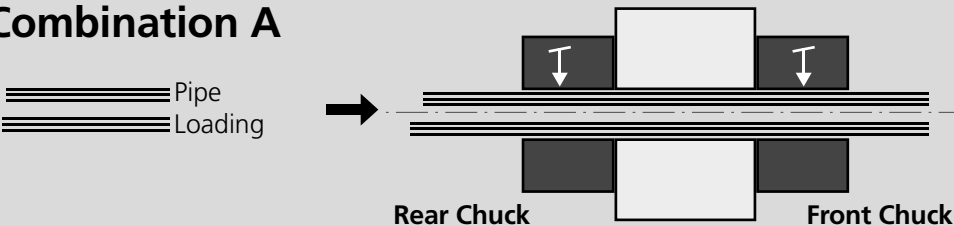
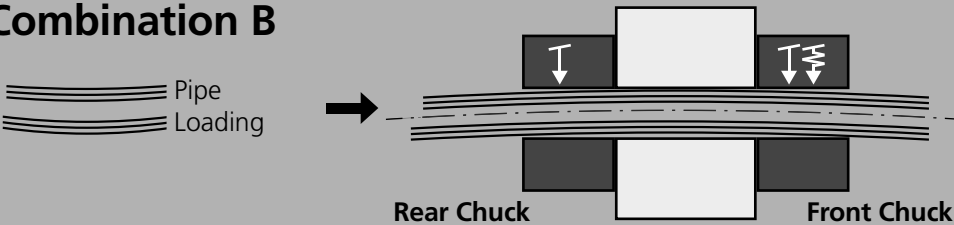
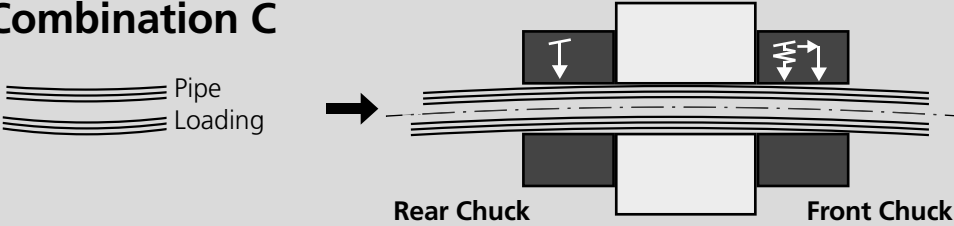
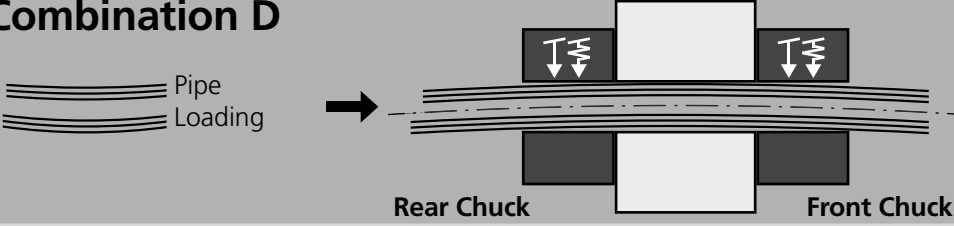
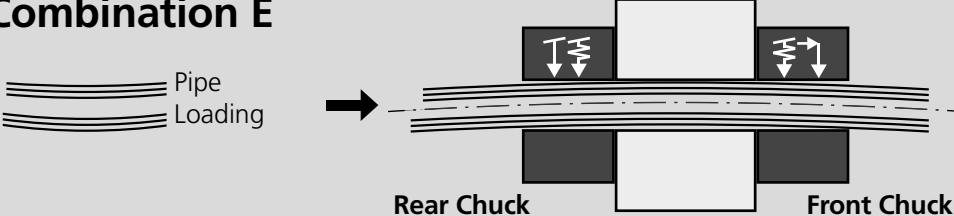
Threading of straight and bent pipe with integrated centering jaws with the original SMW Big Bore Type BB-FZA2G.



- **Integrated centering jaws for the pipe** = no external centering device needed
- Quick jaw movement
- Fully automatic programmable cycle

Pipe Clamping

Recommended Combinations

Self centering clamping	Self centering or compensating clamping	3+3-Combination
Combination A 	Combination B 	Combination C 
Combination D 	Combination E 	

Respective chuck matrix:

Self centering clamping	Self centering or compensating clamping	3 jaw + 3 jaw combination
 BB-N/ BB-N-ES Page 12/14	 BB-AZ2G Page 18	 BB-FZA2G Page 22
 BB-SC Page 16		

Centering options:

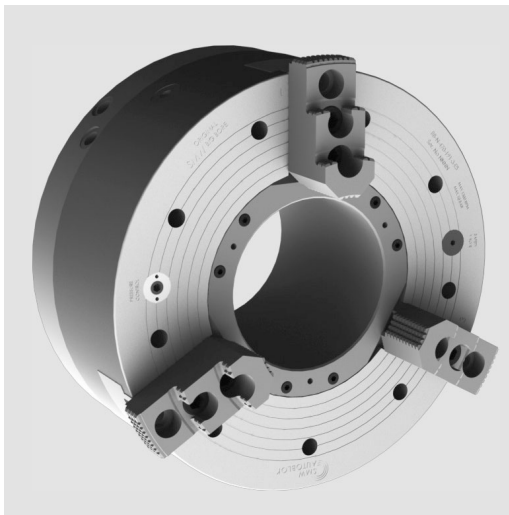
  Chuck CC Page 20	Turret by customer
--	------------------------------

BIG BORE® BB-N-ES

INCH SERRATION

Front-end pneumatic power chucks EXTRA large through hole Ø 140 - 560 mm

- Chuck size 400 - 1000
- Extended jaw stroke
- 3 jaws



Application/customer benefits

- End machining of long pipe with upset ends
- Rapid and clamping stroke for short clamping cycles
- Full spindle bore can be used

Technical features

- Air chuck for external clamping with built-in pneumatic cylinder
- Rapid and clamping stroke
- Air feed via distributor ring and SMW-profile seals, at stopped spindle
- Built in non-return valves maintain the air pressure during machining
- Clamping pressure level constantly checked by a safety control system (only for external clamping)
- Clamping stroke control (no clamping in rapid stroke) is monitored

Standard equipment

- 3-jaw chuck
- 2 elbow unions G 1/2" (4 for BB-N 1000)
- 12 mounting bolts (9 for the BB-N-ES 400)
- 1 lifting eye bolt
- 1 set T-nuts with bolts
- 1 set soft top jaws
- without distributor ring bracket

Ordering example

BIG BORE BB-N-ES 400/Z310

Accessories

Control unit AC-BB/AC-XN
(see general catalog pages 308-311)

The principle invented by SMW: air supply via distributor ring and SMW-profile seal rings

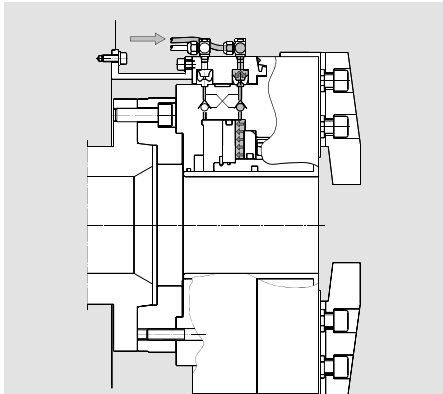


Fig. 1
Open/close movement (only possible at stopped spindle). The profile seals deform radially under the pneumatic pressure, sealing on the chuck body and filling the cylinder chamber. When the clamping pressure is reached, the air feed is stopped, closing the twin non-return valve.

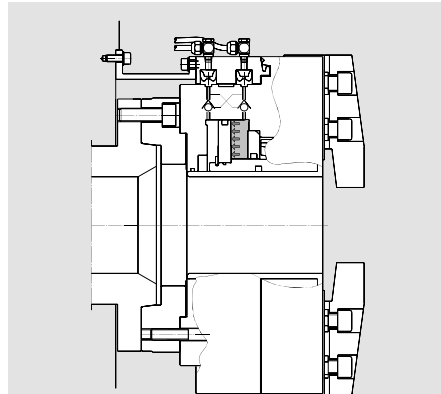


Fig. 2
The SMW-profile seals lift to the expanded position, not touching the chuck body anymore. The clamping pressure is maintained by the twin non-return valve. The chuck can start to rotate.

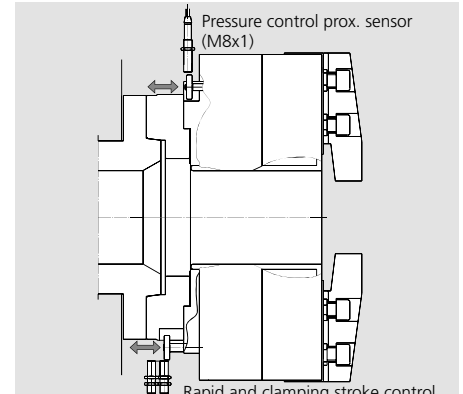
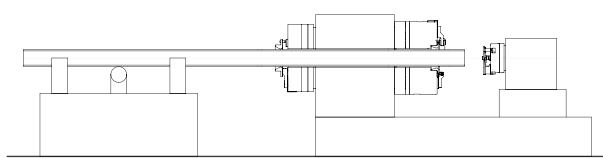
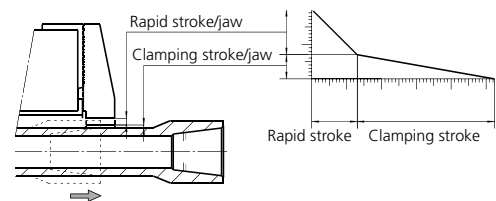


Fig. 3
Safety pressure control: If the pressure is less than a pre-set safety level, the switch ring moves into the proximity-switch field, sending an alarm signal.
Jaw stroke control: If the part is clamped in a not correct jaw stroke position, the switch ring moves into the proximity-switch field sending an alarm signal.



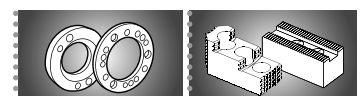
End machining of pipe with front and rear chucks



Technical data

SMW-AUTOBLOK Type BB-N-ES		400-140	470-191	500-205	500-230	600-275	630-325	850-375	1000-560
Id. No.		052330	053536	052651	052652	052990	052653	052654	052655
Through-hole	mm (inch)	140 (5.51")	191 (7.52")	205 (8.07")	230 (9.06")	275 (10.83")	325 (12.80")	375 (14.76")	560 (22.05")
Total stroke per jaw	mm (inch)	20 (0.79")	20 (0.79")	25.4 (1")	25.4 (1")	25.4 (1")	25.4 (1")	25.4 (1")	25.4 (1")
Rapid stroke per jaw*	mm (inch)	13 (0.51")	13 (0.51")	16.9 (0.67")	16.9 (0.67")	16.9 (0.67")	17.2 (0.67")	13.4 (0.53")	15 (0.59")
Clamping stroke per jaw	mm (inch)	7 (0.28")	7 (0.28")	8.5 (0.33")	8.5 (0.33")	8.5 (0.33")	8.2 (0.32")	12 (0.47")	10.4 (0.41")
Operating pressure min./max.	bar (psi)	2/10 (29/145)	2/10 (29/145)	2/10 (29/145)	2/10 (29/145)	2/10 (29/145)	2/10 (29/145)	2/10 (29/145)	2/10 (29/145)
Piston area	cm ²	705	565	1004	895	954	1192	1340	1090
Gripping force at 6 bar	kN (lbf)	130 (29225)	115 (25853)	190 (42714)	170 (38218)	185 (41590)	200 (44962)	200 (44962)	170 (38218)
Max. speed	r.p.m.	1300	1300	1100	1300	1100	900	750	450
Air consumption/jaw stroke at 6 bar	liter	29	22	41	37	39	48	79	57
Weight (without top jaws)	kg (lbs)	200 (441)	190 (419)	340 (750)	325 (717)	360 (794)	630 (1389)	970 (2138)	960 (2116)
Moment of inertia	kg-m ²	6.5	9.83	16.4	16.1	19	36	105	160

* Could not be used for clamping



SMW-AUTOBLOK
291

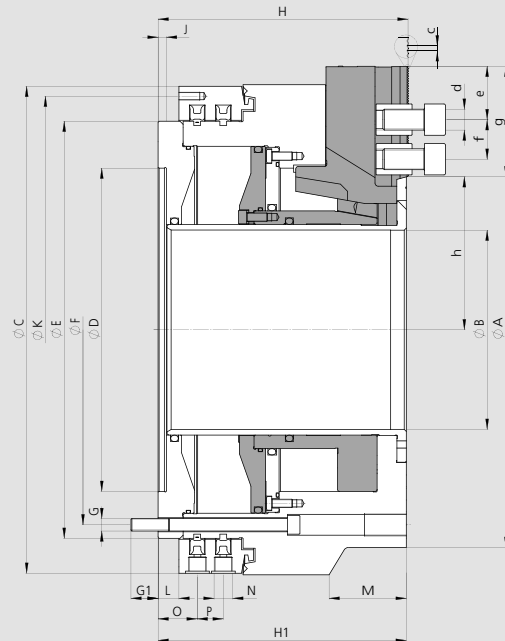
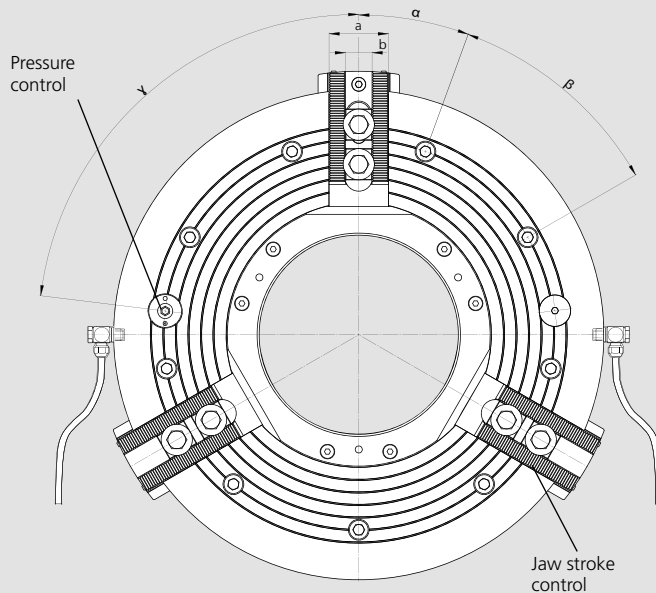
SMW-AUTOBLOK
290

BIG BORE® BB-N-ES

INCH SERRATION

Main dimensions and technical data

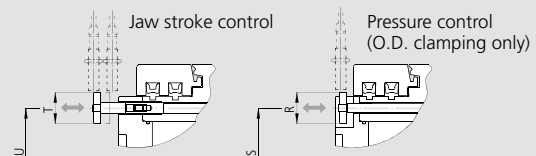
Jaw position: Open for external clamping



* All hoses/piping must be at least 1/2" ID, and min 3/4" ID from chuck size 630 on.

BB-N-ES 1000 needs 2 hoses per function open/close (see installation manual).

To determine the exact position of the jaw stroke control and the pressure control please ask for a customer drawing.



enlarged illustration

Subject to technical changes.
For more detailed information please ask our customer service.

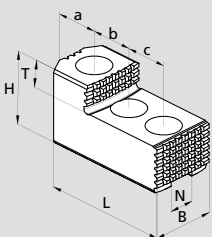
SMW-AUTOBLOK Type BB-N-ES			400-140	470-191	500-205	500-230	600-275	630-325	850-375	1000-560
Id. No.			052330	053536	052651	052652	052990	052653	052654	052655
Mounting			Z310	Z310	Z415	Z415	Z450	Z510	Z700	Z700
	A	mm	467	470	570	570	605	685	850	1000
	B	mm	140	191	205	230	275	325	375	560
	C	mm	467	467	570	570	605	685	850	925
	D H6	mm	310	310	415	415	450	510	700	700
	E	mm	400	400	500	500	535	610	775	850
Fixing bolts circle	F	mm	374	374	474	474	508	580	745	815
	G	mm	M12	M12	M12	M12	M12	M16	M16	M16
	G1	mm	26	26	25	25	25	30	30	30
	H	mm	240	240	282	282	282	307.5	354	332
	H1	mm	238	238	280	280	280	305.5	352	330
	J	mm	8	8	8	8	8	8	8	10
Thread circle 6 x M8	K	mm	448	448	550	550	585	666	830	910
	L	mm	20	20	20	20	20	20	25	33
	M	mm	-	-	-	-	-	-	-	224
Pneumatic connection	N	inch	G 1/2"	G 1/2"	G 1/2"	G 1/2"	G 1/2"	G 1/2"	G 1/2"	G 1/2"
	O	mm	37	37	37	37	37	39.5	44.5	52.5
	P	mm	26	26	26	26	26	33	33	33
	R	mm	35	35	35	35	35	42	35	42
	S	mm	374	374	474	474	508	580	745	815
	T	mm	35	35	35	35	35	35	35	35
	U	mm	374	374	474	474	508	580	745	815
	a	mm	57	57	57	57	57	75	75	75
	b	mm	25.5	25.5	25.5	25.5	25.5	30	30	30
Serration	c	inch	3/32" x 90°	3/32" x 90°	3/32" x 90°	3/32" x 90°	3/32" x 90°	3/32" x 90°	3/32" x 90°	3/32" x 90°
Bolt ISO 4762 12.9	d	mm	M20	M20	M20	M20	M20	M24	M24	M24
Min.	e	mm	14	14	14	14	14	16	16	16
T-nuts distance min./max.	f	mm	38/90	38/85	38/104	38/92	38/79	47/100	47/140	47/125
Serration length	g	mm	121	106	140	127.5	116.5	138	182	166
Min./max.	h	mm	104/124	127/147	145.6/171	158/182.5	179.1/204.5	204.6/230	242.6/268	334.6/360
	α	deg.	20	20	15	15	15	15	15	15
	β	deg.	9 x 40	9 x 40	12 x 30	12 x 30	12 x 30	12 x 30	12 x 30	12 x 30
(Pressure control)	γ	deg.	83	83	60	60	60	60	60	60

BIG BORE® BB-N-ES

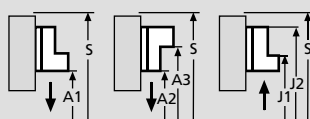
INCH SERRATION

■ Top jaws
■ T-nuts

MHB-D Hard reversible top jaws

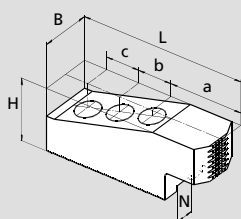


Gripping ranges

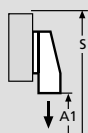


Chuck BB-N-ES	400-140	470-191	500-205	500-230	600-275	630-325	850-375	1000-560
Jaw type	MHB-D 500	MHB-D 500	MHB-D 500	MHB-D 500	MHB-D 500	MHB-D 630	MHB-D 800	MHB-D 800
Id. No.	12084546	12084546	12084546	12084546	12084546	12086446	12088046	12088046
B	60	60	60	60	60	75	75	75
H	75	75	75	75	75	85	85	85
L	140	140	140	140	140	160	220	220
T	2 x 19	2 x 19	2 x 19	2 x 19	2 x 19	30	30	30
N	25.5	25.5	25.5	25.5	25.5	30	30	30
Serration	3/32" x 90°	3/32" x 90°	3/32" x 90°	3/32" x 90°	3/32" x 90°	3/32" x 90°	3/32" x 90°	3/32" x 90°
a	46	46	46	46	46	30	51	51
b	38	38	38	38	38	50	62	62
c	38	38	38	38	38	50	62	62
kg/set	6.6	6.6	6.6	6.6	6.6	13.5	19.5	19.5
A1	78-264	113-270	175-388	200-388	252-422	295-500	320-610	470-760
A2	125-310	160-315	225-435	250-435	376-546	295-500	330-620	480-770
A3	310-495	345-500	410-620	435-620	475-645	495-700	590-865	745-1030
J1	-	-	-	-	-	-	-	-
J2	-	-	-	-	-	-	-	-
S	635	640	765	765	765	870	1070	1250

GAB Hard top jaws

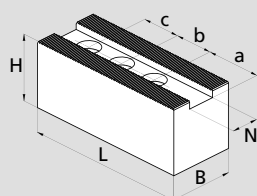


Gripping ranges

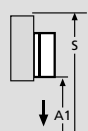


Chuck BB-N-ES	400-140	470-191	500-205	500-230	600-275	630-325	850-375	1000-560
Jaw type	GAB 500	GAB 500	GAB 500	GAB 500	GAB 500	GAB 630	GAB 800	GAB 800
Id. No.	12085146	12085146	12085146	12085146	12085146	12086546	12089046	12089046
B	55	55	55	55	55	75	75	75
H	73	73	73	73	73	82	82	82
L	195	195	195	195	195	245	320	320
N	25.5	25.5	25.5	25.5	25.5	30	30	30
Serration	3/32" x 90°	3/32" x 90°	3/32" x 90°	3/32" x 90°	3/32" x 90°	3/32" x 90°	3/32" x 90°	3/32" x 90°
a	96	96	96	96	96	113	165	165
b	38	38	38	38	38	50	60	60
c	38	38	38	38	38	50	60	60
kg/set	16.5	16.5	16.5	16.5	16.5	31.5	40.5	40.5
A1	25-160	60-165	75-290	100-290	135-306	130-335	95-385	245-535
S	635	640	765	765	740	870	1060	1210

WBSA-D/WBC-D Soft top jaws



Gripping ranges



Chuck BB-N-ES	400-140	470-191	500-205	500-230	600-275	630-325	850-375	1000-560
Jaw type	WBSA-D 500	WBSA-D 500	WBSA-D 500	WBSA-D 500	WBSA-D 500	WBC-D 630	WBC 800	WBC-D 800
Id. No.	12075050	12075050	12075050	12075050	12075050	12076440	12078040	12078040
B	60	60	60	60	60	80	80	80
H	60	60	60	60	60	80	80	80
L	170	170	170	170	170	240	320	320
N	25.5	25.5	25.5	25.5	25.5	30	30	30
Serration	3/32" x 90°	3/32" x 90°	3/32" x 90°	3/32" x 90°	3/32" x 90°	3/32" x 90°	3/32" x 90°	3/32" x 90°
a	69	69	69	69	69	110	165	165
b	38	38	38	38	38	50	60	60
c	38	38	38	38	38	50	60	60
kg/piece	3.6	3.6	3.6	3.6	3.6	11	15	15
A1	35-220	70-225	130-335	155-335	189-360	135-340	95-385	245-535
S	590	595	720	720	740	865	1060	1210

JAWS-CATALOG

Request or
download:
www.smw-autoblok.de

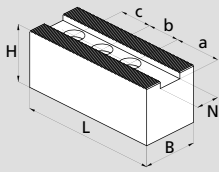


BIG BORE® BB-N-ES

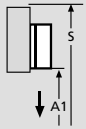
INCH SERRATION

- Top jaws
- T-nuts
- Adapters

WBC-D, WBCL-D Soft top jaws long version

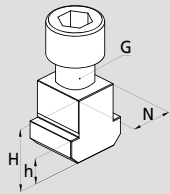


Gripping ranges



Chuck BB-N-ES	400-140	470-191	500-205	500-230	600-275	630-325	850-375	1000-560
Jaw type	WBC-D 502	WBC-D 502	WBC-D 502	WBC-D 502	WBC-D 502	WBC-D 800	WBCL-D 800	WBCL-D 800
Id. No./pc.	12075140	12075140	12075140	12075140	12075140	12078040	12079040	12079040
B	60	60	60	60	60	80	80	80
H	60	60	60	60	60	80	80	80
L	205	205	205	205	205	320	390	390
N	25.5	25.5	25.5	25.5	25.5	30	30	30
Serration	3/32" x 90°	3/32" x 90°	3/32" x 90°	3/32" x 90°	3/32" x 90°	3/32" x 90°	3/32" x 90°	3/32" x 90°
a	104	104	104	104	104	165	230	230
b	38	38	38	38	38	60	60	60
c	38	38	38	38	38	60	60	60
kg	4.5	4.5	4.5	4.5	4.5	15	18	18
A1	-	0-150	60-275	85-275	119-290	25-210	25-255	115-405
S	-	595	720	720	740	895	1070	1220

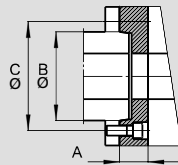
NST T-nuts



Chuck BB-N-ES	400-140	470-191	500-205	500-230	600-275	630-325	850-375	1000-560
T-nut type	NST	NST	NST	NST	NST	NST	NST	NST
Id. No.	12065020	12065020	12065020	12065020	12065020	13063900	13063900	13063900
N	25.5	25.5	25.5	25.5	25.5	30	30	30
H	34	34	34	34	34	44	44	44
h	15	15	15	15	15	18	18	18
G	M 20	M 20	M 20	M 20	M 20	M 24	M24	M 24
Bolt ISO 4762 12.9	M20 x 40	M20 x 40	M20 x 40	M20 x 40	M20 x 40	M24 x 60	M24 x 60	M24 x 60

Spindle-Adapters for BIG BORE chucks

ISO-A DIN 55026 Spindle-Adapters



BB-N-ES	400-140/470-191			500-205/500-230			600-275			630-325			850-375		1000-560	
Spindle nose	A8	A11	A15	A11	A15	A20	A11	A15	A20	A11	A15	A20	A15	A20	A15	A20
Id. No.	24184020	24114020	24124020	24115030	24125020	24175020	24116020	24126020	24176020	24116320	24126320	24176320	24128020	24178020	on request	
A	mm 40	40	40	40	40	40	40	40	40	50	50	50	50	50		
B	mm 139.719	196.869	285.775	196.869	285.775	412.775	196.869	285.775	412.775	196.869	285.775	412.775	285.775	412.775	265.775	412.775
C	mm 171.4	235	330.2	235	330.2	463.6	235	330.2	463.6	235	330.2	463.6	330.2	463.6	330.2	463.6

Bayonet and camlock spindle adapters are available on request

JAWS-CATALOG

Request or
download:
www.smw-autoblok.de

