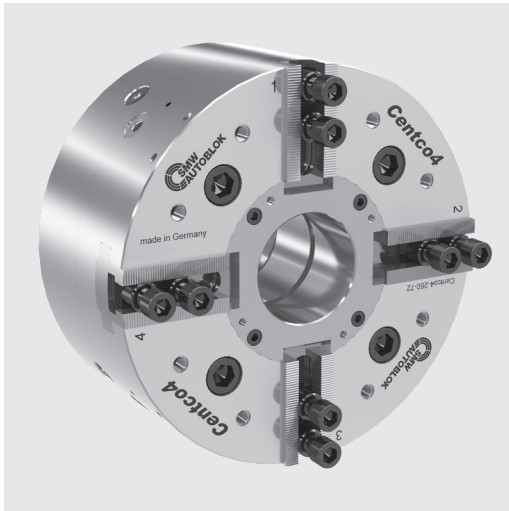


## 4-jaw chuck

- 2+2 Central
- Independent self centering clamping in 2 axis
- Centrifugal force compensation



### Application/customer benefits

- Independent self centering clamping in 2 axis via 1 central actuating mechanism
- Mechanical centering of the workpiece
- Clamping of every workpiece geometry possible
- Centrifugal force compensation for maximum speed
- Long lifetime due to hardened parts
- Large range of standard top jaws

### Technical features

- Centrifugal force compensation
- Optimized lubrication system
- Large through-hole
- Jaw interface 1/16" x 90°

### Standard equipment

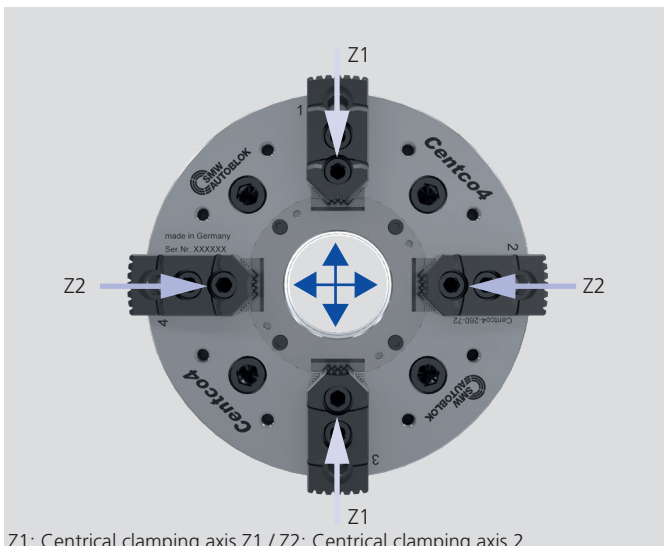
4 jaw chuck, 8 pieces T-nuts and bolts

### Ordering example

4 jaw chuck Centco4-260-72

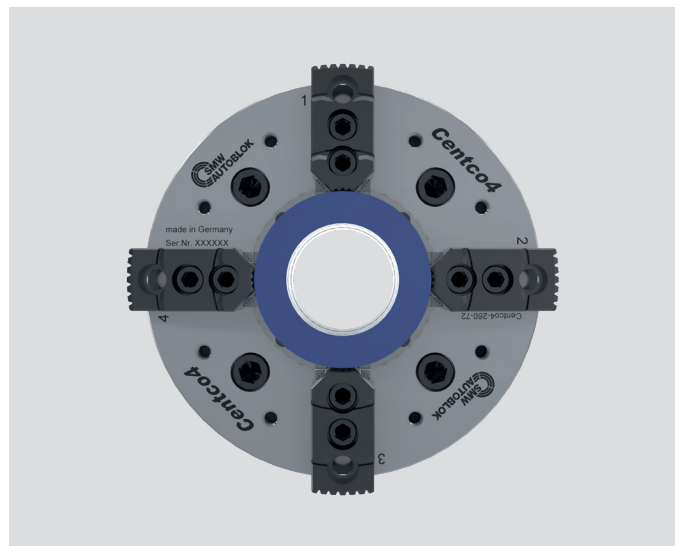
## Application Examples

### 2+2 Central and compensating clamping

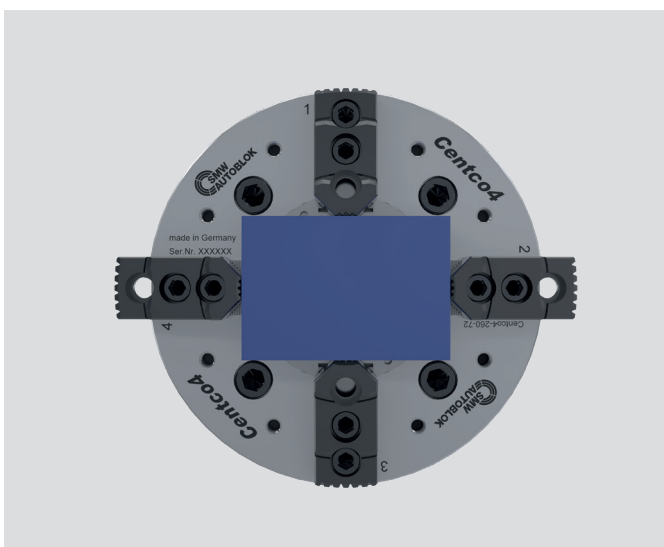


Z1: Central clamping axis Z1 / Z2: Central clamping axis 2

### 2+2 Central clamping of round or square workpieces



### 2+2 Central and compensating clamping of angular workpieces



### 2+2 Central and compensating clamping of shapeless workpieces

