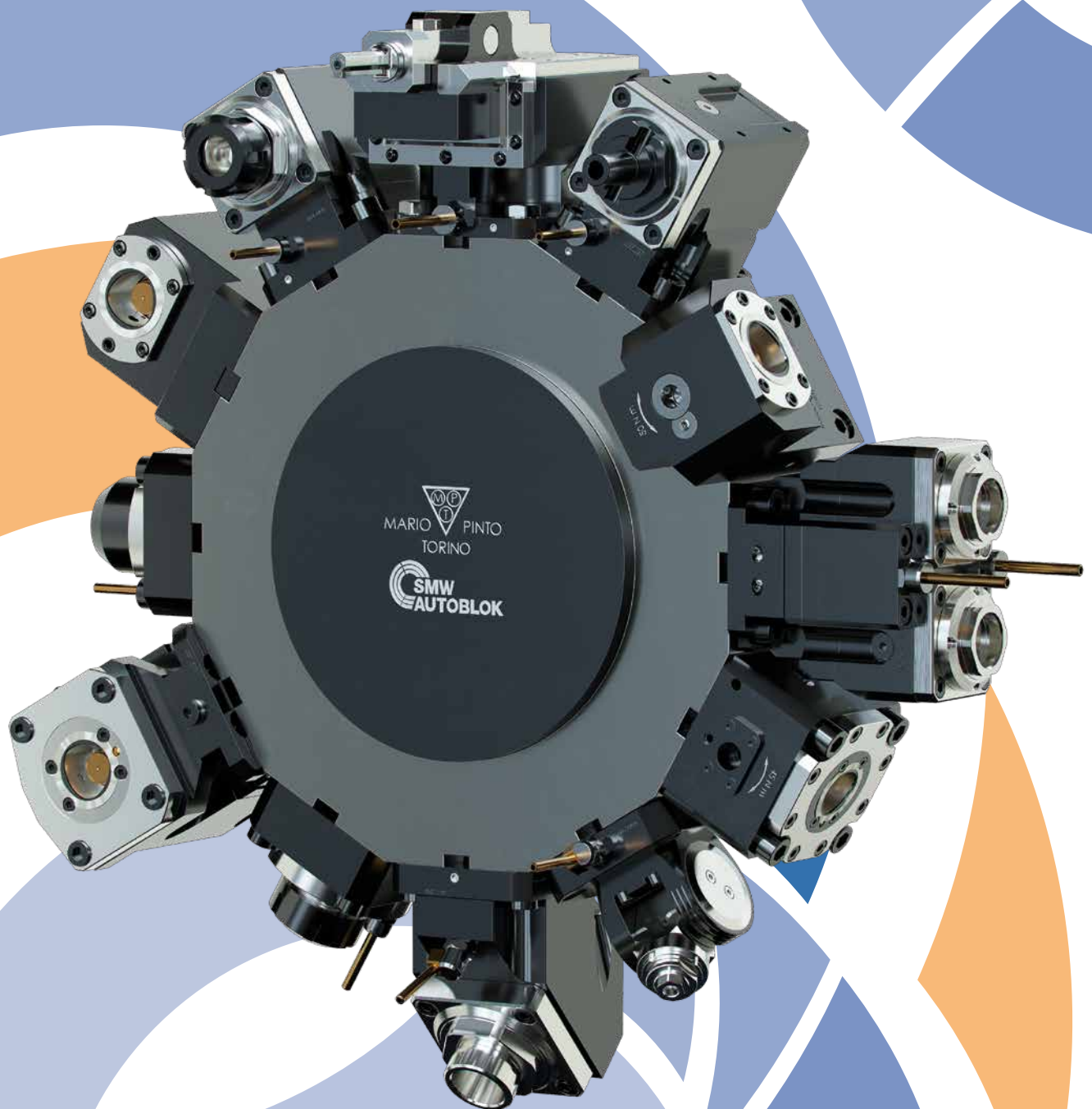




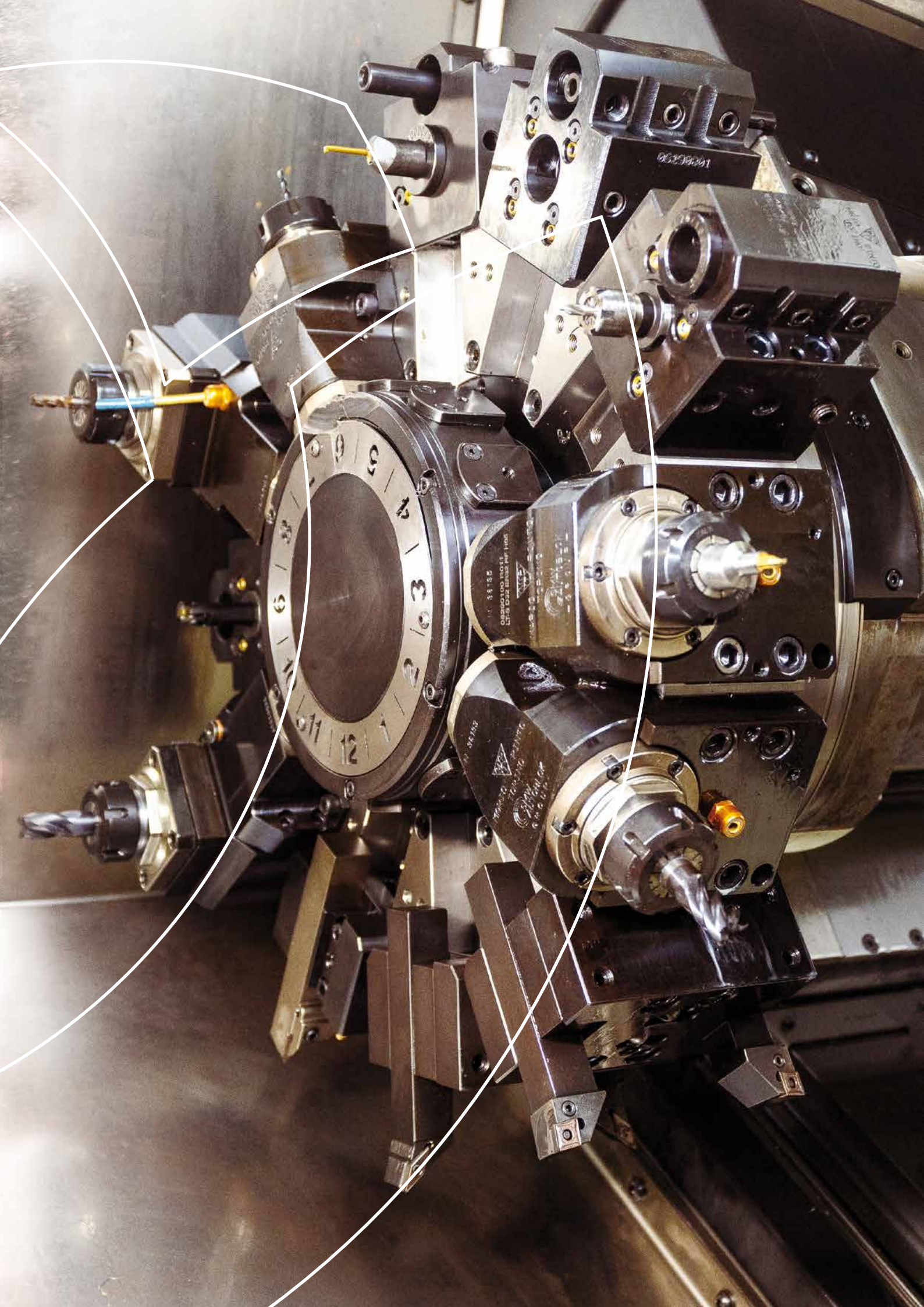
**MARIO PINTO**



## ***LIVE AND STATIC TOOLING***



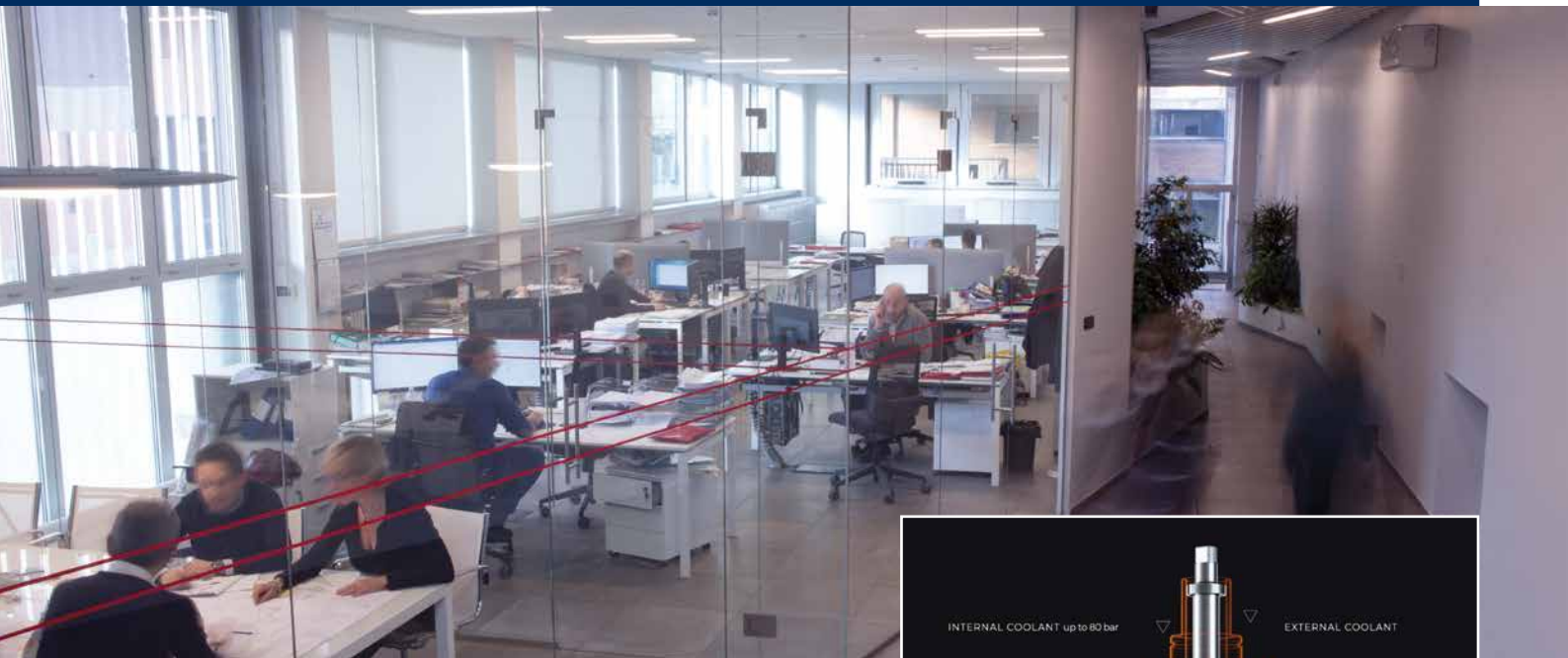






# MARIO PINTO S.p.A - SMW AUTOBLOK GROUP

Specialists in live and static tooling, chucks and clamping systems



**MARIO PINTO** was founded in Torino in 1922 and soon became a point of reference for design and manufacturing of chucks and workholding systems for machine tools. Using the most advanced technology, our specialised and customer-oriented team built a long and fruitful experience in the machine tool market, providing customers with the highest quality level of product and service during the years. In the early 2000's a new range was added to the program; **Live and Static Toolholders** for turning centres, currently representing an outstanding product on the market. Chucks and Toolholders are entirely designed and manufactured in our factory in Torino, Italy.



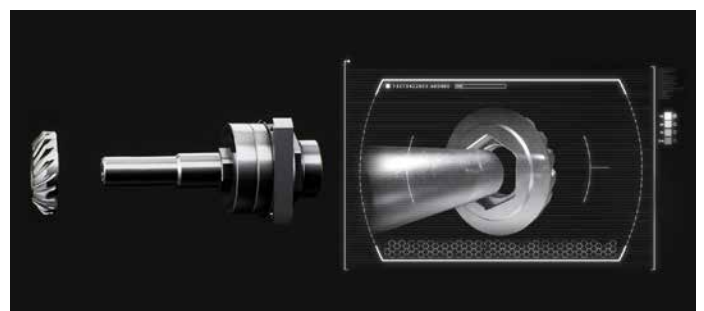
**MARIO PINTO** is part of the **SMW-AUTOBLOK** group, global leader in the workholding for machine tools, with a widespread service of pre- and aftersales assistance, covering a big number of countries.

## HIGHEST PERFORMANCE • HIGHEST RIGIDITY • LONG LIFE

**Extra-compact patented drive system**  
**Hexagonal joint between shaft and gear**



**Toolholder completely sealed**  
**Oversized gears made of hardened steel**

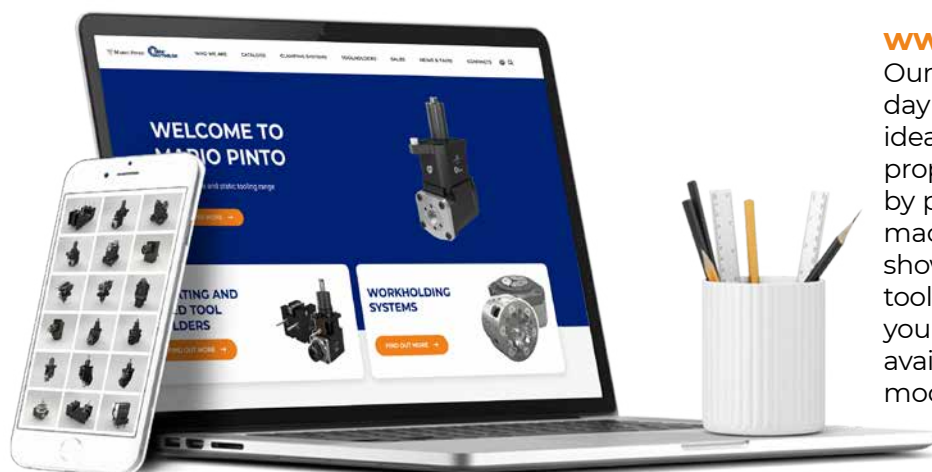
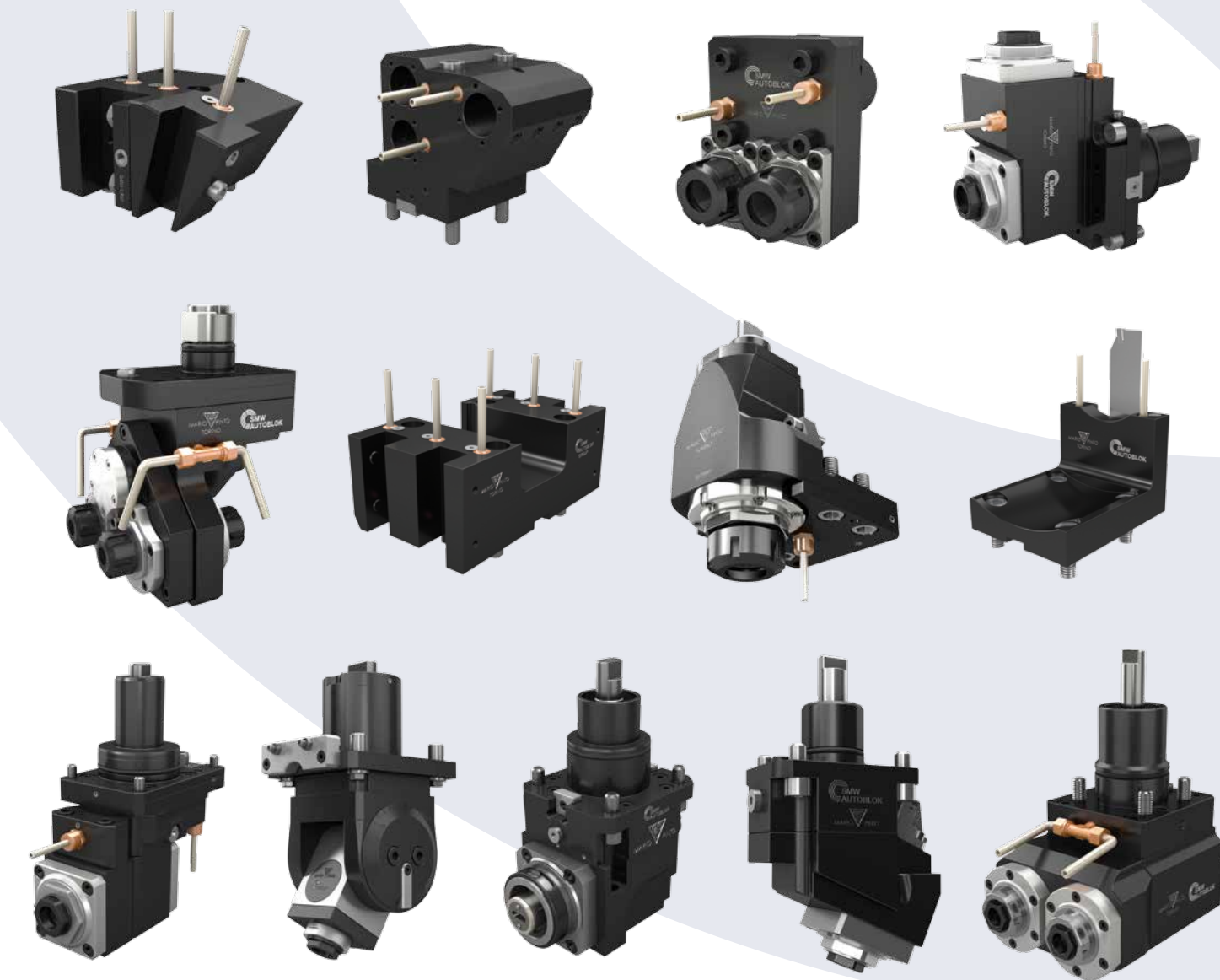


# LIVE AND STATIC TOOLING

Wide range available

The **MARIO PINTO Tooling** program shows a wide range of live and static toolholders for turning centers to suit all needs, providing a number of solutions and the highest versatility.

We produce toolholders with internal coolant, high pressure up to 80 bar, speed up to 12.000 rpm, multiplied and reduced transmission.



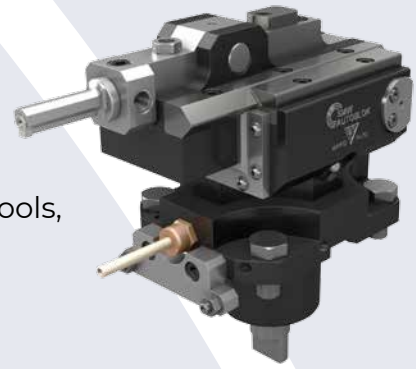
[www.live-tooling.com](http://www.live-tooling.com)

Our online catalogue is being updated every day with new models, and represents the ideal instrument to help customer find the proper tool. Toolholders can be sorted either by part number or machine tool builder, by machine model or drive type; a pdf drawing, showing all main details, is available for each toolholder and can be easily downloaded; or you can print a short catalogue, including all available toolholders for a specific machine model/machine tool builder.



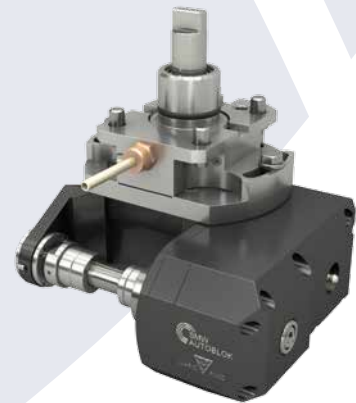
## SLOTING TOOL

- Suitable for all turning machines with radial turret
- Available with stroke 25, 35 or 65 mm
- Customized solutions including insert-holders and cutting tools, expressly quoted basing on stuff, profile and slot dimensions, for excellent results.



## HOBGING TOOL

- Suitable for all turning machines with radial turret
- Highest rigidity and accuracy (hexagonal joint)
- Angular adjustment
- Available also in reduced transmission
- Interchangeability of the hobbing shaft
- Highest productivity
- Possible usage as cutting-holder and/or shell-mill



## LIVE TOOLING WITH QUICK CHANGE POLIGONAL SHANK ISO 26623-1

- Highest accuracy and rigidity
- Multiple solutions, highest flexibility
- Internal coolant up to 80 bar
- Speed up to 12.000 rpm
- Sizes C3 - C4 - C5 - C6
- Available for live and static toolholders



## STEADY RESTS FOR TURRETS

**For turning of bars  
without secondary spindle.**

- Highest centering precision
- Highest support rigidity assured by three contact points
- Direct mounting on the turret, no connecting parts necessary
- Spring-operated opening / closing with coolant
- Several models available with different clamping capacity considering the size of the machine



# COMPANIES WORLDWIDE



Our plants are located in Italy - Caprie Novaretto, Torino, Pavia, Lainate - and Germany - Meckenbeuren. While distribution in Italy is provided by a qualified technical and commercial staff, our international sales net is located in Argentina, Baltic States, Brasil, China, Czech/Slovak Republic, France, India, Japan, Mexico, Poland, Portugal, Scandinavia, South Korea, Spain, Taiwan, Turkey, UK, Ukraine, USA; everywhere ready to assist customers at each step of the sales process.



**MARIO PINTO**



DISTRIBUTED BY:

**MARIO PINTO S.p.A.** unipersonale

Strada delle Cacce, 21 - 10135 Torino - Italy

Ph. +39 0113918811 (r.a.)

[www.mariopinto.it](http://www.mariopinto.it) - E-mail: [info@mariopinto.it](mailto:info@mariopinto.it)



AZIENDA CON  
SISTEMA DI GESTIONE QUALITÀ  
CERTIFICATO DA DNV  
ISO 9001

[www.live-tooling.com](http://www.live-tooling.com)