

2+2 jaw compensating chuck

- 2+2 jaw hydraulic actuation
- Quick change center or adjustable
- For grinding
- Sealed and low maintenance

Application/customer benefits

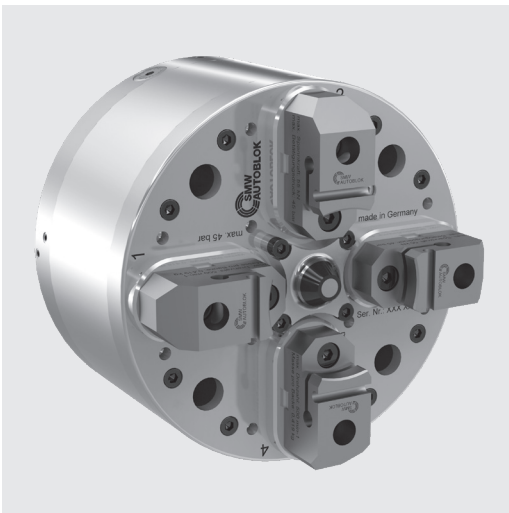
- For grinding of shafts

Technical features

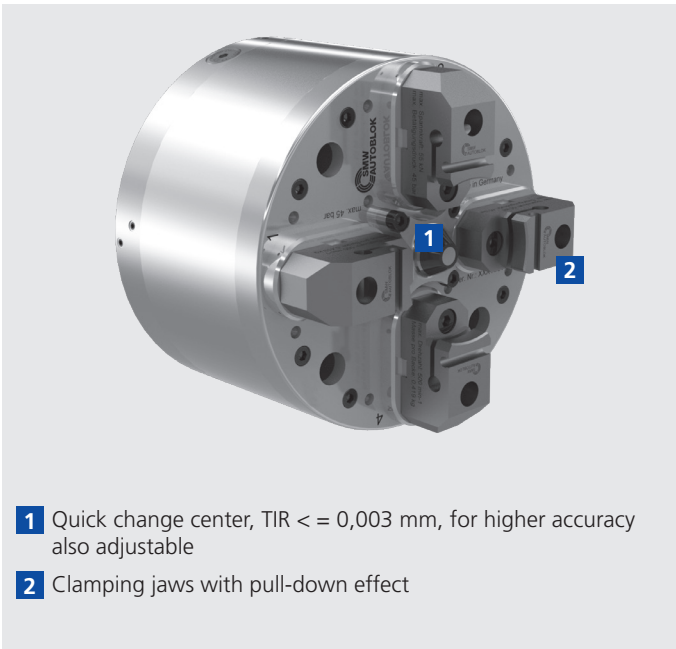
- 2+2 jaw hydraulic actuation
- Oil distribution via hydraulic manifold
- Quick change center or adjustable
- Sealed, oil bath lubricated and low maintenance

Standard equipment

2+2 jaw compensating chuck
without center, without top jaws

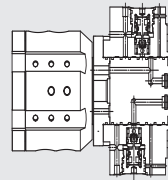


Product features



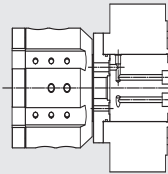
- 1** Quick change center, TIR $\leq 0,003\text{ mm}$, for higher accuracy also adjustable
- 2** Clamping jaws with pull-down effect

rotary distributor adaption versions



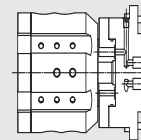
version 1:
Rotary distributor with flange
with safety valves

Id.-Nr. -046881-



version 2:
Rotary distributor with flange
two-pieced

Id.-Nr. -046880-

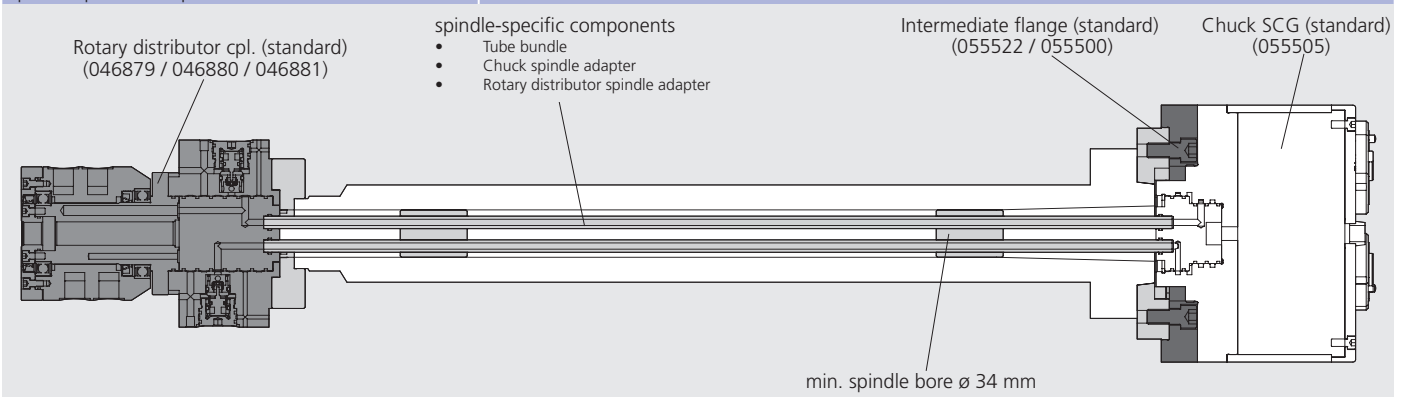


version 3:
Rotary distributor with flange
compact

Id.-Nr. -046879-

Ordering review

Type	Order number
Chuck	055505
Intermediate flange / intermediate flange adjustable	055522 / 055500
Rotary distributor cpl.	046879 / 046880 / 046881
spindle-specific components	tbd.

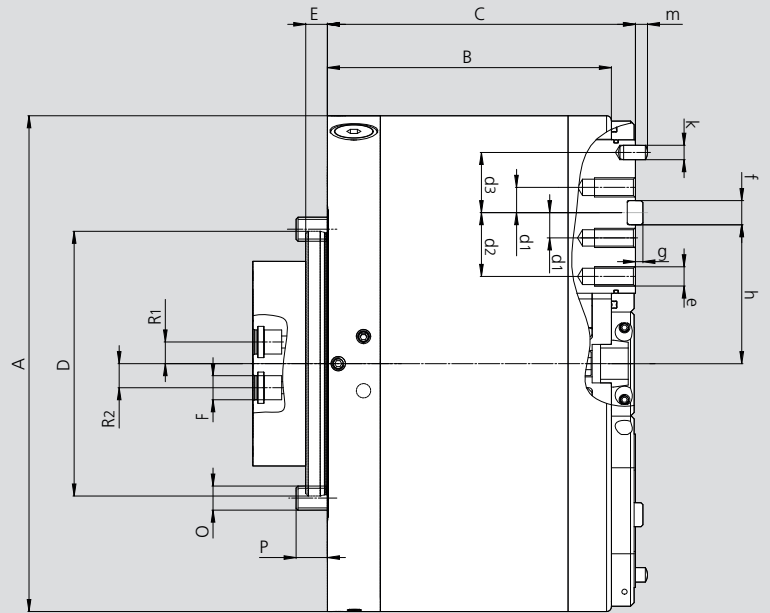
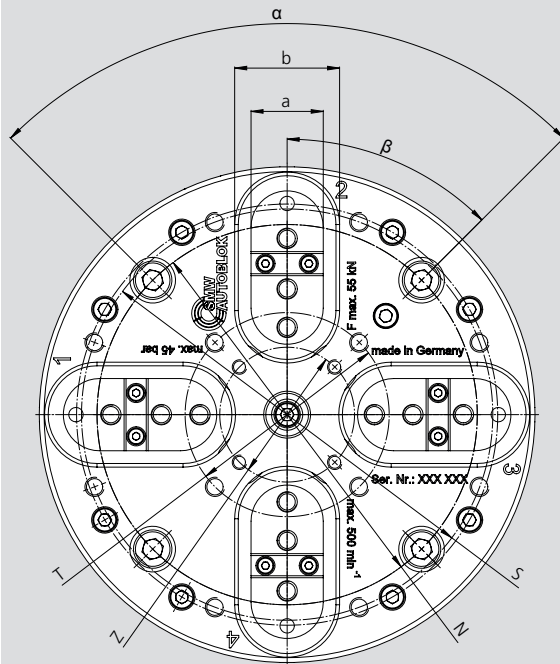


2+2 jaw compensating chuck

- 2+2 jaw hydraulic actuation
- Quick change center
- For grinding
- Sealed and low maintenance

SCG

2+2 jaw hydraulic actuation



Subject to technical changes.
For more detailed information please ask our customer service.

SMW-AUTOBLOK Type SCG		206	
Mounting	Size	Z110	
	A	mm	206
	B	mm	118
	C	mm	128
Centering	D	mm	110
	E	mm	9
Connection bore for tube bundle (dia. - depth - No.)	F	mm	Ø10 x 12mm - 4 x 90°
Fixing bolt circle	N	mm	158
Fixing bolt	O	mm	M10 (4x)
Min. thread engagement of the fixing bolt	P	mm	13
Bolt-circle for centerpoint (dia. - size - depth - No.)	Z	mm	Ø56 - M6 x 8 - 4 x 90°
Bolt-circle for tube bundle (3x) Radius	R1	mm	18
Bolt-circle for tube bundle (1x / clamping jaws 1+3) Radius	R2	mm	20
Bolt-circle (dia. - size - depth)	S	mm	Ø170.9 - M8 x 8
Bolt-circle (dia. - size - depth)	T	mm	Ø84.8 - M8 x 8
	a	mm	30
	b	mm	43.6
	d1	mm	10.5
	d2	mm	26.5
	d3	mm	25
Thread jaws (3x)	e	mm	M8 x 17
Notch	f h6	mm	10
	g	mm	3.1
Distance between notch and center of chuck (chuck opened)	h	mm	57.75
Pin	k h6	mm	6
	m	mm	5
	α	deg.	90
	β	deg.	45
Radial jaw stroke		mm	2
Pressure max.		bar	45
Gripping force max.		kN	55
Speed max.		r.p.m.	500
Weight (without top jaws)		kg	31
Moment of inertia		kg·m ²	0.22