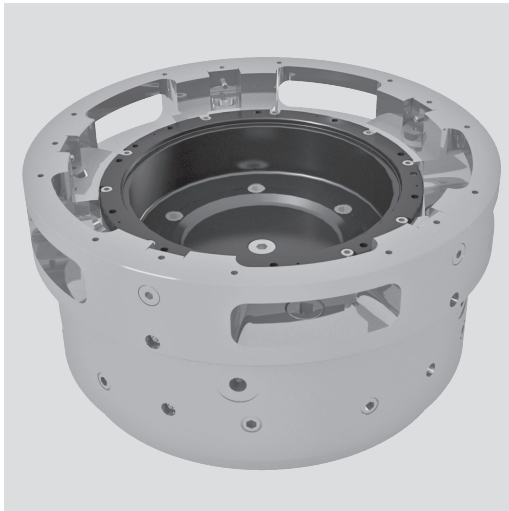


ACS-E 5

Self centering column chuck

Self-centering column chucks with pull down Ø 520 mm

- Pull down
- Power operated via standard cylinders
- O.D. clamping



Application/customer benefits

- For small, medium and large quantities at high precision
- Pull down of the workpiece to the axial workstop during clamping
- Minimum loss of gripping force at high speed
- Jaw on request

Technical features

- Chuck body completely case hardened
- Openings in the chuck body to evacuate chips
- Central bore for coolant / air

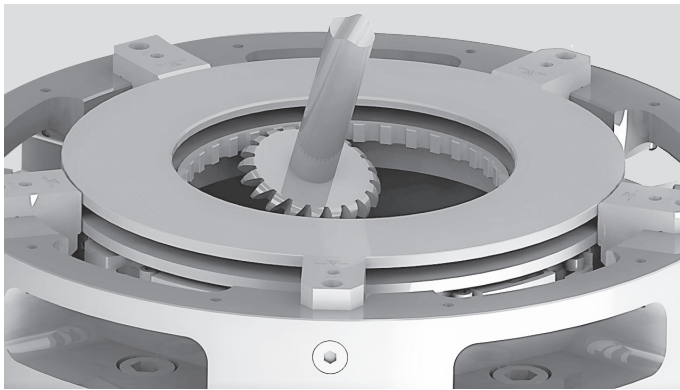
Standard equipment

5 jaw chuck
Mounting bolts

Ordering example

5 jaw column chuck
with center mounting Z450
type ACS-E 5 520 Z450

Precise distribution of clamping forces



5-jaw model assures a very precise distribution of the clamping forces, since there's no contrast of two opposite jaws on the same axis.

Suitable for the following parts machining:

- Ring gears
- Shafts with internal and external gears
- Keys or single-gear components with external gear wheels and internal keys

Technical data

SMW-AUTOBLOK Type		ACS-E 5 520
Jaw stroke	mm	4
Piston stroke	mm	15
Actuating force max.	kN	20
Grip force max.	kN	48
Speed max.	r.p.m.	1000
Weight	kg	259
Moment of inertia	kg·m ²	9
Clamping range	min.	265
Clamping range	max.	420
Rec. actuating cylinders	Type	SIN-S 125
Rec. actuating cylinders	Type	SIN-S 150
Chuck	Id. No.	on request
Jaw blanks	Id. No.	on request

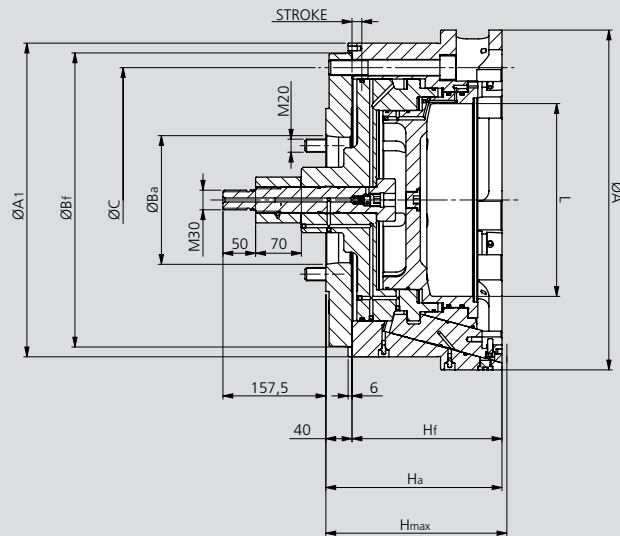
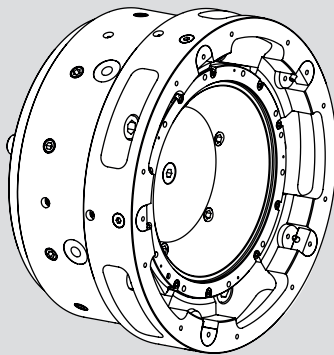
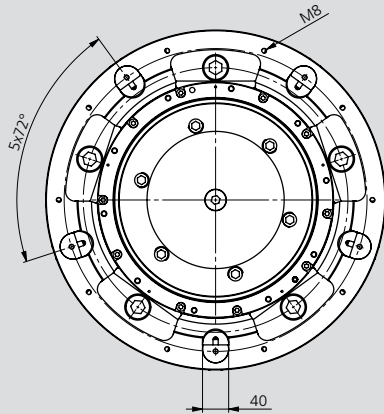
Self-centering column chucks with pull down Ø 520 mm

- Pull down
- Power operated via standard cylinders
- O.D. clamping

ACS-E 5

Self centering
column chuck

ACS-E 520



Subject to technical changes.
For more detailed information please ask our customer service.

SMW-AUTOBLOK Type		ACS-E 5 520
Mounting		ISO-A11 Z450
A	mm	520
A1	mm	480
Ba	mm	196.869
Bf	mm	450
C	mm	405
H max.	mm	277
Ha	mm	270.5
Hf	mm	229
L	mm	295
stroke	mm	15