

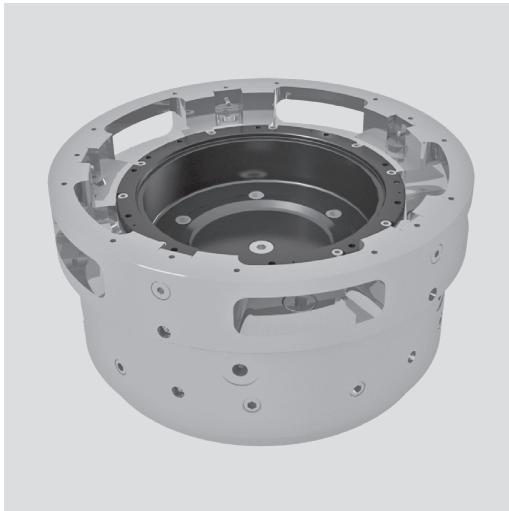
# ACS-E 5

Self centering  
column chuck

## Self-centering column chuck with pull down

Ø 520 mm

- Pull down
- Power operated via standard cylinders
- O.D. clamping



### Application/customer benefits

- For small, medium and large quantities at high precision
- Pull down of the workpiece to the axial workstop during clamping
- Minimum loss of gripping force at high speed
- Jaws on request

### Technical features

- Chuck body completely case hardened
- Openings in the chuck body to evacuate chips
- Central bore for coolant / air

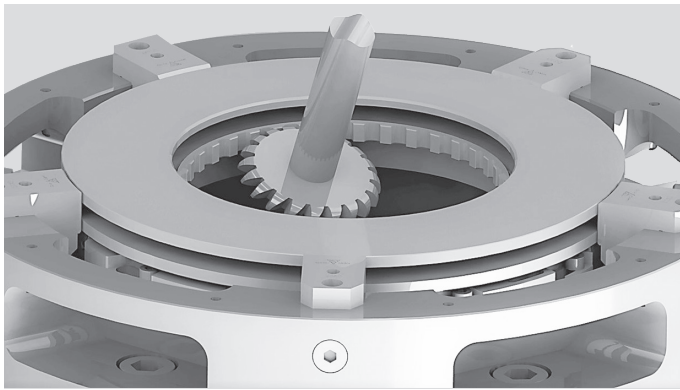
### Standard equipment

5-jaw chuck  
Mounting bolts

### Ordering example

5-jaw column chuck  
with center mounting Z450  
type ACS-E 5 520 Z450

## Precise distribution of clamping forces



5-jaw model assures a very precise distribution of the clamping forces, since there's no contrast of two opposite jaws on the same axis.

Suitable for the following parts machining:

- Ring gears
- Shafts with internal and external gears
- Keys or single-gear components with external gear wheels and internal keys

## Technical data

SMW-AUTOBLOK Type		ACS-E 5 520
Jaw stroke	mm	4
Piston stroke	mm	15
Actuating force max.	kN	20
Grip force max.	kN	48
Speed max.	r.p.m.	1000
Weight	kg	259
Moment of inertia	kg·m <sup>2</sup>	9
Clamping range	min.	265
Clamping range	max.	420
Rec. actuating cylinders	Type	SIN-S 125
Rec. actuating cylinders	Type	SIN-S 150
Id.-No. ACS-E 5		on request
Id.-No. Jaw blanks		on request

# Self-centering column chucks with pull down

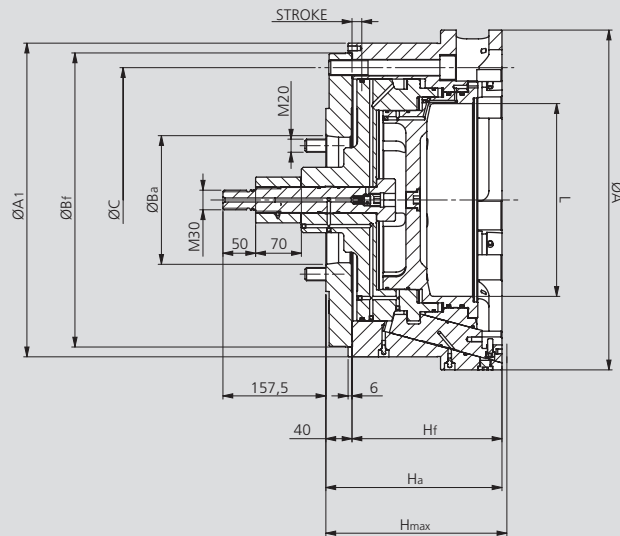
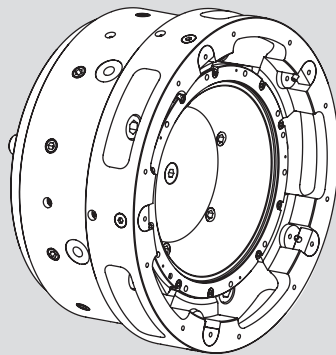
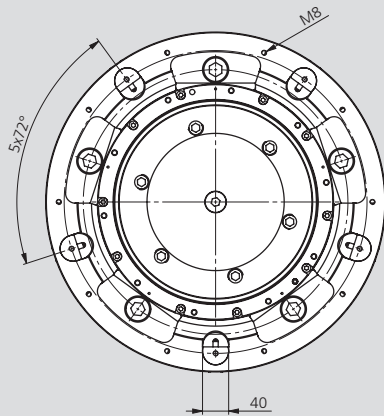
Ø 520 mm

- Pull down
- Power operated via standard cylinders
- O.D. clamping

# ACS-E 5

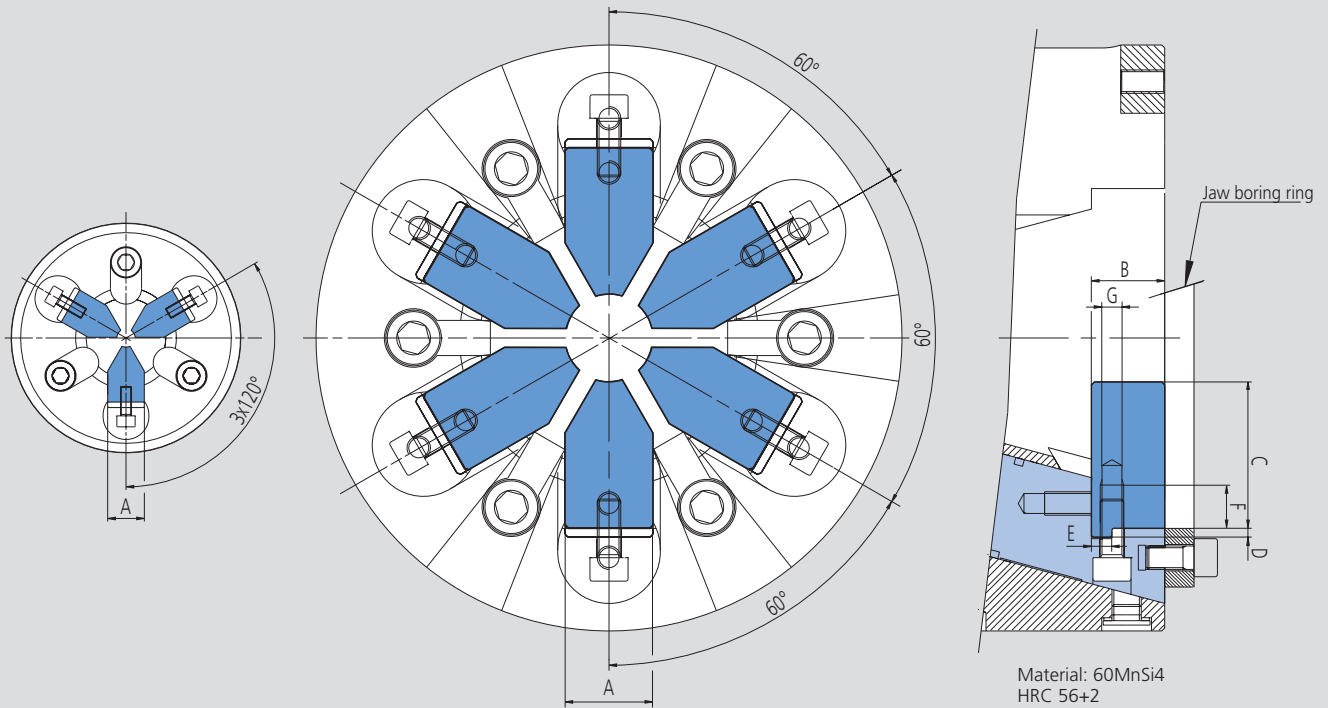
Self centering column chuck

ACS-E 520



Subject to technical changes.  
For more detailed information please ask our customer service.

SMW-AUTOBLOK Type		ACS-E 5 520
Mounting		ISO-A11 Z450
A	mm	520
A1	mm	480
Ba	mm	196.869
Bf	mm	450
C	mm	405
H max.	mm	277
Ha	mm	270.5
Hf	mm	229
L	mm	295
Stroke	mm	15



Subject to technical changes.  
For more detailed information please ask our customer service.

SMW-AUTOBLOK Type ACS-E		110	130	145	170	200	220	260	320	350	450
<b>Number of jaws</b>		<b>3</b>	<b>3</b>	<b>3</b>	<b>3</b>	<b>3 / 6</b>	<b>3 / 6</b>	<b>3 / 6</b>	<b>3 / 6</b>	<b>3 / 6</b>	<b>3 / 6</b>
	<b>A</b> h6	18	20	20	20	30	30	30	30	30	30
	<b>B</b>	18	20	20	20	25	25	25	25	25	25
	<b>C</b>	29.5	30	35	40	50	50	50	75	75	75
	<b>D</b>	3	3	3	3	3	3	3	3	3	3
	<b>E</b> g6	5	6	6	6	7	7	7	7	7	7
	<b>F</b>	13	13	13	13	15	15	15	15	15	15
	<b>G</b>	M6	M6	M6	M6	M8	M8	M8	M8	M8	M8
<b>Rec. clamping range</b>	<b>min.</b>	4	10	20	30	30	50	90	90	120	208
<b>Rec. clamping range</b>	<b>max.</b>	45	50	70	95	100	125	165	215	245	335
Jaw blanks (1 set = 3 pcs.)	Id. No.	69761110	69761310	69761410	69761710	69762010*	69762210*	69762210*	69763210*	69763210*	-
Boring ring	Id. No.	69111110	69111310	69111410	69111710	69112040	69112240	69112540	69113240	69113540	69114540
<b>Id. No ACS-E 3 Jaws</b>		77690111	77690113	77690114	77690117	77690120	77690122	77690125	77690132	77690135	-
<b>Id. No ACS-E 6 Jaws</b>		-	-	-	-	77690420	77690422	77690425	77690432	77690435	77690445

\* For 6-jaw chucks use 2 set of 3 pcs.



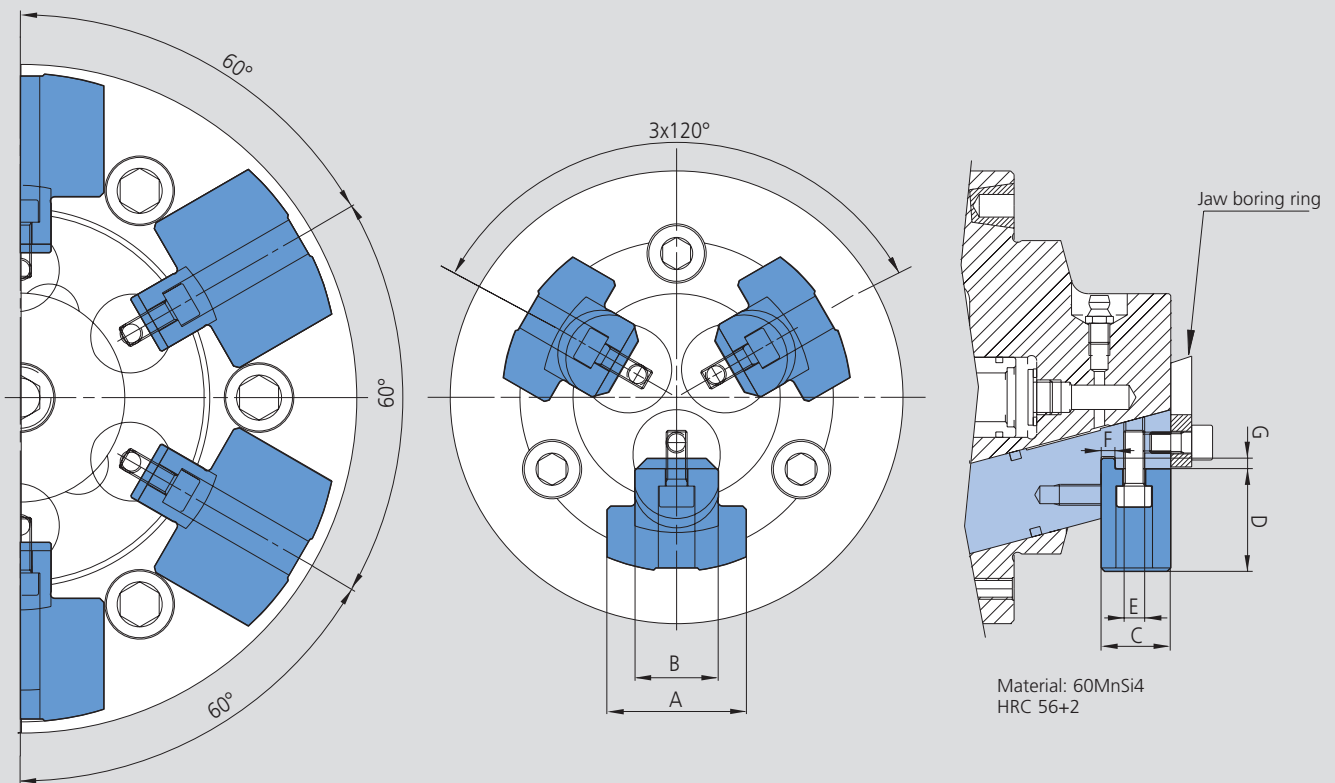
SMW-AUTOBLOK  
472

SMW-AUTOBLOK  
466

SMW-AUTOBLOK  
327

■ For 3 and 6 jaw chucks

Jaws



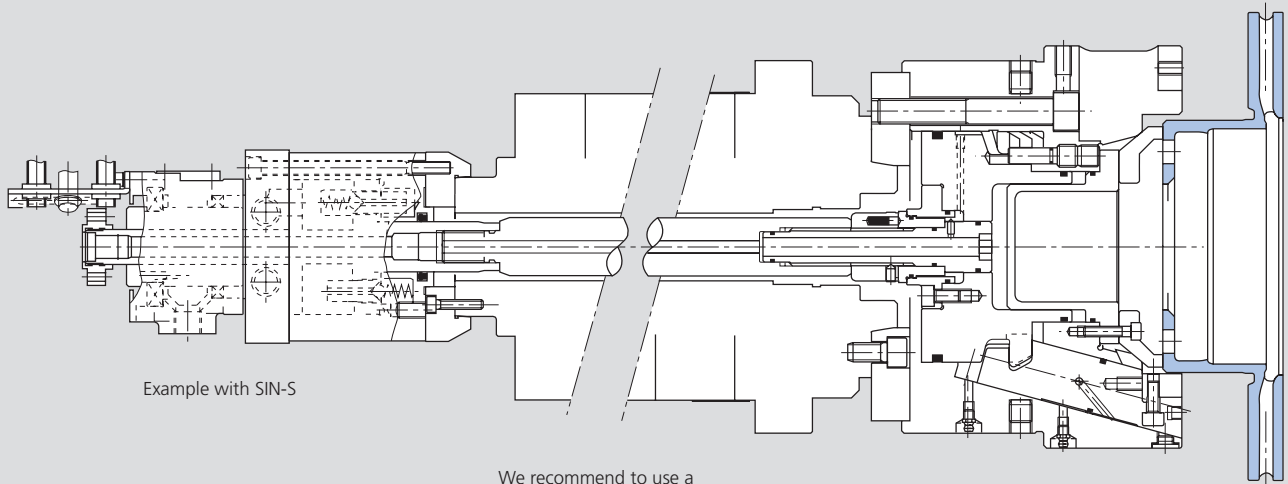
Subject to technical changes.  
For more detailed information please ask our customer service.

SMW-AUTOBLOK Type ACS-I		ACS-I 130	ACS-I 160	ACS-I 200	ACS-I 240	ACS-I 300
<b>Number of jaws</b>		<b>3</b>	<b>3</b>	<b>3</b>	<b>6</b>	<b>6</b>
	<b>A</b>	40	40	60	60	60
	<b>B h6</b>	24	22	22	22	22
	<b>C</b>	20	23	23	23	23
	<b>D</b>	29.5	41	61.5	61.5	53
	<b>E</b>	3 x M6	3 x M8	3 x M8	3 x M8	6 x M8
	<b>F g6</b>	4	4	4	4	4
	<b>G</b>	3	3	3	3	3
<b>Rec. clamping range</b>	<b>min.</b>	65**	92	110	144	210
<b>Rec. clamping range</b>	<b>max.</b>	100	140	200	232	280
Jaw blanks (set of 3 or 6 pieces)	Id. No.	69761360	69761660*	69762060*	69762490*	69763090*
Boring ring	Id. No.	69111360	69111660	69112060	69112490	69113090
<b>Id. No ACS-I</b>		77690613	77690616	77690620	77690924	77690930

\* Identical for size 160-200-240-300.

\*\* Min. 60 with special jaws and mounting bolts.

**ACS-E** e.g. OP10 „Machining brake disc“

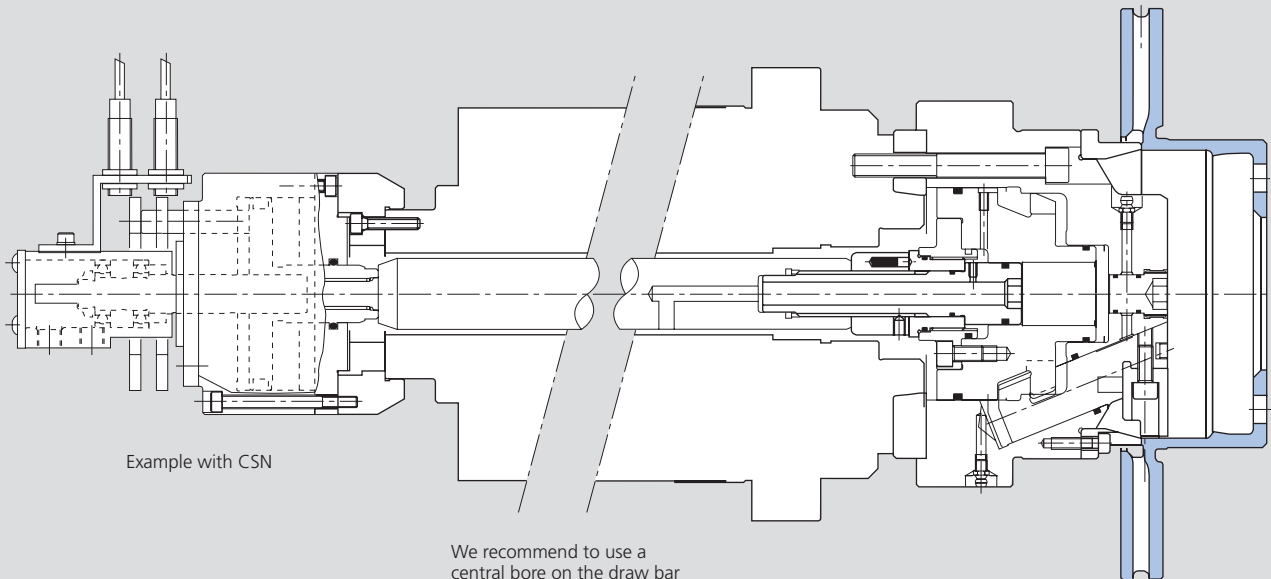


Example with SIN-S

We recommend to use a central bore on the draw bar

Subject to technical changes.  
For more detailed information please ask our customer service.

**ACS-I** e.g. OP20 „Machining brake disc“



Example with CSN

We recommend to use a central bore on the draw bar

Front workstop with air sensing or airblast

Subject to technical changes.  
For more detailed information please ask our customer service.