

# BIG BORE® BB-SC

INCH SERRATION

## Front-end spring clamp power chuck EXTRA large through-hole Ø 275 - 565 mm

- Chuck size 600 - 1020
- Clamping with spring packs
- Rapid and clamping stroke



### Application/customer benefits

- End machining of long pipes / self centering clamping
- Long jaw stroke to clear upset piping
- Highest productivity / open and clamp time < 3 sec.
- Low maintenance = high availability of the machine
- Step mode for partial opening / clamping for shimming possible
- Full spindle bore can be used

### Technical features

- Self centering clamping with either 9 / 6 / 3 spring packs
- Encapsulated spring packs
- Opening via integrated cylinder
- Permanently grease lubricated for constant grip force
- Long jaw stroke with rapid and clamping stroke
- Low air consumption
- Stroke control
- **proofline® chucks** = fully sealed - low maintenance

### Standard equipment

- Chuck with mounting bolts
- 1 set of soft top jaws
- 1 set of T-nuts and bolts

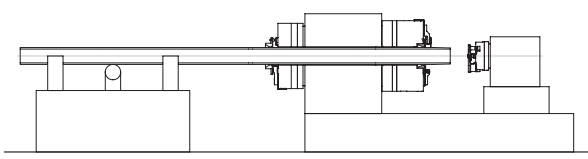
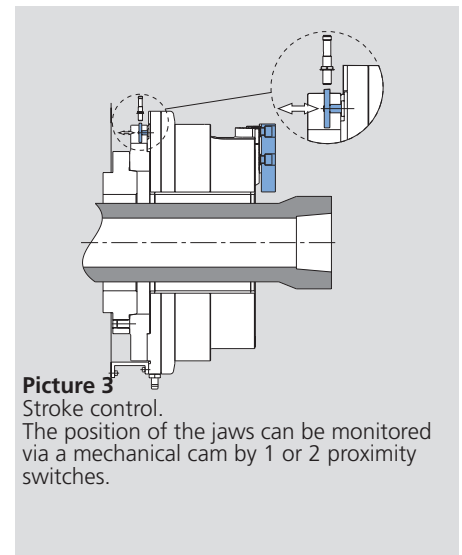
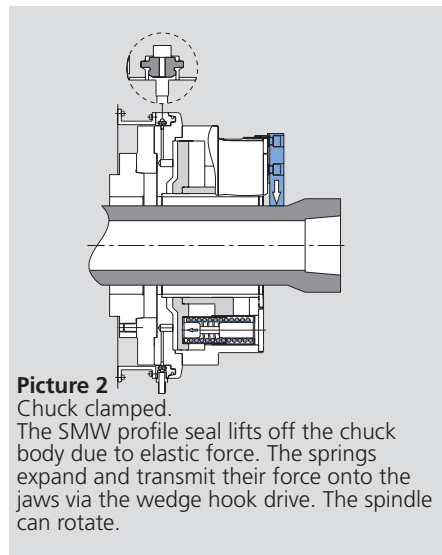
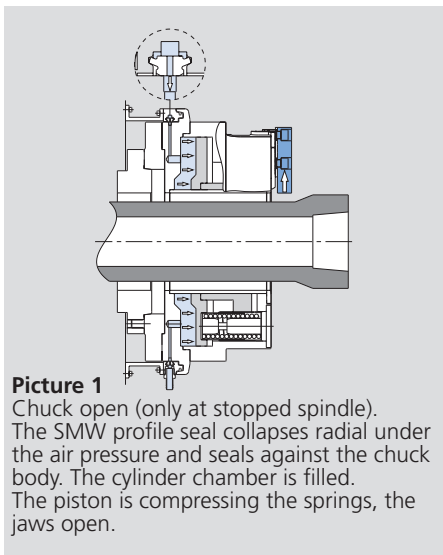
### Ordering example

Big Bore SC 850-395  
Id. No. 053350

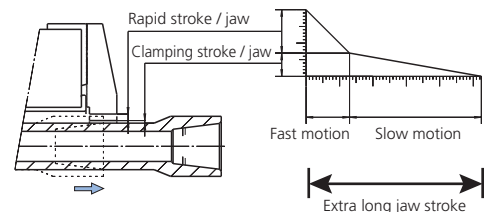
### Accessories

Air control AC-SC

## The reliable principle: Clamping via encapsulated spring packs / opening via air cylinder



End machining of tubes with front and rear chucks



### Technical data

SMW-AUTOBLOK Type		BB-SC 600-275			BB-SC 850-395			BB-SC 1020-565		
Id. No.		053540			053350			053570		
Through-hole	mm (inch)	275 (10.83")			395 (15.55")			565 (22.24")		
Total stroke per jaw	mm (inch)	25.4 (1")			27 (1.06")			27 (1.06")		
Rapid stroke per jaw*	mm (inch)	16.9 (0.67")			15 (0.59")			15 (0.59")		
Clamping stroke per jaw	mm (inch)	8.5 (0.33")			12 (0.47")			12 (0.47")		
Operating pressure at 9 springs	bar (psi)	5 (73)			5 (73)			5 (73)		
Max. gripping force at 3 / 6 / 9 springs	kN (lbf)	50 (11240)	100 (22480)	150 (33721)	57 (12814)	113 (25403)	170 (38218)	57 (12814)	113 (25403)	170 (38218)
Max. speed	r.p.m.	1000			700			420		
Air consumption to open at 5 bar (73 psi)	liter	60			115			139		
Weight (without jaws)	kg (lbs)	510 (1124)			930 (2050)			1260 (2779)		
Moment of inertia	kg-m <sup>2</sup>	34			101			223		

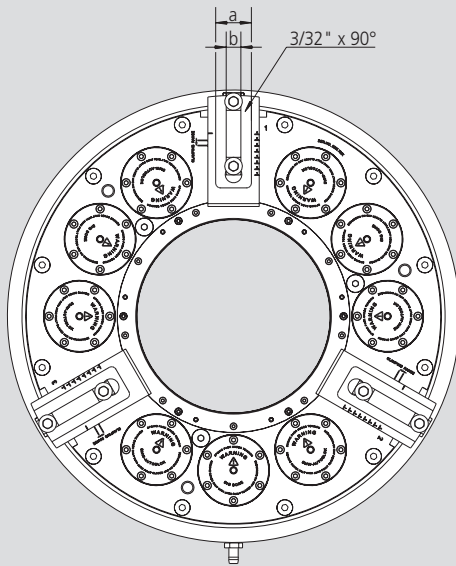
\* May not be used for clamping.



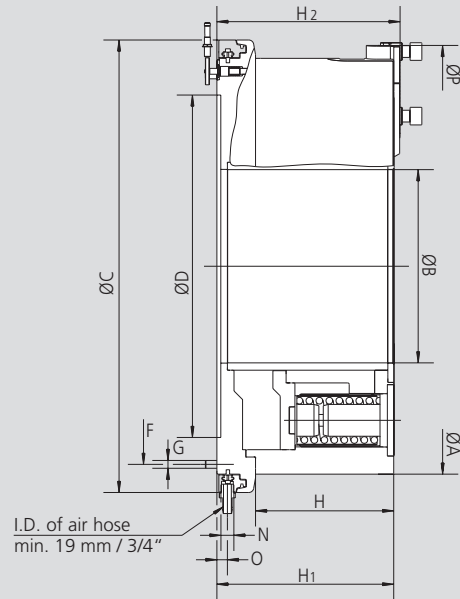
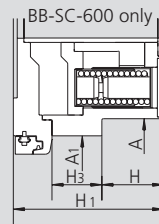
SMW-AUTOBLOK  
363

SMW-AUTOBLOK  
360

### ■ Main dimensions and technical data



Opening pressure with all springs mounted  
Min. 5 bar (73 psi), max. 8 bar (116 psi)



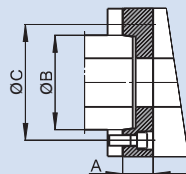
I.D. of air hose  
min. 19 mm / 3/4"

Subject to technical changes.  
For more detailed information please ask our customer service.

SMW-AUTOBLOK Type			BB-SC 600-275	BB-SC 850-395	BB-SC 1020-565
<b>Mounting</b>			<b>Z520</b>	<b>Z700</b>	<b>Z870</b>
(BB-SC-600-275)	<b>A</b>	mm	605	850	1020
Through-hole	<b>A1</b>	mm	675	-	-
	<b>B</b>	mm	275	395	565
	<b>C</b>	mm	750	925	1095
	<b>D H6</b>	mm	520	700	870
	<b>F</b>	mm	640	810	980
	<b>G</b>		M12 (12x)	M16 (12x)	M16 (12x)
	<b>H</b>		126.7	282.5	282.5
	<b>H1</b>		307.5	361.5	361.5
	<b>H2</b>		320.5	374.5	374.5
(BB-SC-600-275)	<b>H3</b>		102	-	-
	<b>N</b>		G 3/4"	G 3/4"	G 3/4"
	<b>O</b>		21.5	21.5	21.5
Max. swing	<b>P</b>		655.8	902.8	1074
	<b>a</b>		58	73	73
	<b>b</b>		25.5	30	30
Rapid stroke		mm	16.9	15	15
Clamping stroke		mm	8.5	12	12
Total clamping stroke		mm	25.4	27	27

## Spindle adapters

Spindle adapters  
ISO-A DIN 55026



BB-SC	600-275			850-395		1020-565		
<b>Spindle nose</b>	A11	A15	A20	A15	A20	A15	A20	A28
Id. No.	on request	053590	053591	053362	053358	on request	053595	053596