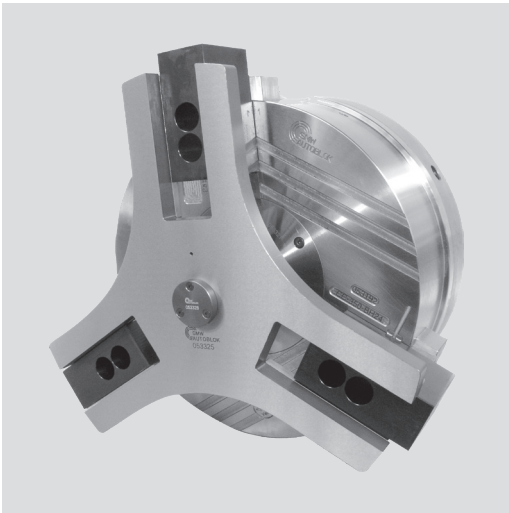


INCH SERRATION

■ With integrated dampener



Application/customer benefits

- Axial positioning and centering of tubes when a BB-AZ2G chuck on the main spindle is used in compensating clamping mode
- Integrated hydraulic dampener with fixed end position for controlled deceleration and positioning of tubes
- Suitable for O.D. and I.D. centering

Technical features

- Stationary pneumatic clamping unit with integrated dampener / end stop
- Operating pressure 2 - 10 bar (29 - 145 psi)
- Monitoring of end position of the axial stop via prox. switch (prox. switch optional)

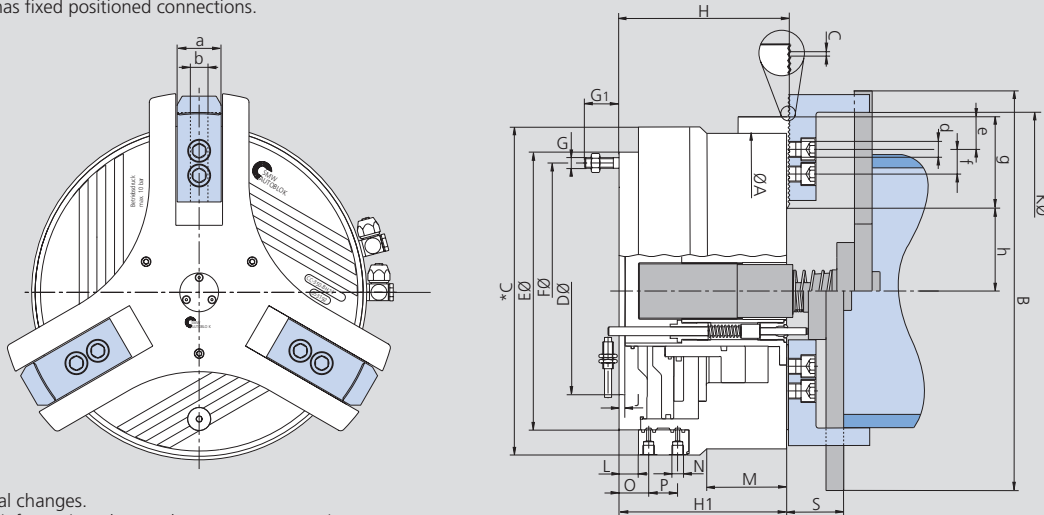
Standard equipment

3-jaw centering chuck
1 set of soft top jaws

Ordering example

Stationary centering chuck CC-350

* Chuck CC-240 has fixed positioned connections.

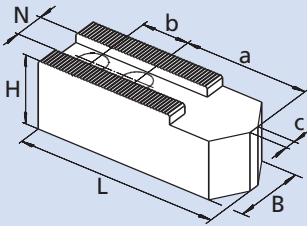


Subject to technical changes.
For more detailed information please ask our customer service.

SMW-AUTOBLOK Type			CC 240 Z	CC 350 Z	CC 470 Z
Id. No.			053290	053192	054470
	A	mm	240	360	470
	B	mm	306	446	550
	C	mm	250	372	n.a.
	D H6	mm	195	235	310
	E	mm		315	400
	F	mm	223.8	290.5	374
	G/G1	mm	M12 / 39	M12 / 39	M12 / 26
	H	mm	135.5	191.5	239.5
	H1	mm	134	190	238
	J	mm	6.5	6.5	8
Clamping Ø max.	K	mm	245	365	507
	L	mm	-	21	20
	M	mm	49	92	n.a.
Pneumatic connection	N	inch	G 1/4"	G 1/4"	G 1/2"
Min. / max.	S	mm	45 / 95	47 / 97	50.5 / 152.5
	a	mm	40	44	60
	o	mm	74	33	37
	p	mm	-	33	26
	b f7	mm	17	21	25.5
Serration	c	inch	1/16" x 90°	1/16" x 90°	3/32" x 90°
Bolts ISO 4762 12.9	d	mm	M12 x 30	M16 x 35	M20 x 45
Min.	e	mm	9.5	12	15
T-nut distance min. / max.	f	mm	22 / 41.5	25 / 72	35 / 68
Length of serration	g	mm	59	95	99
Min. / max.	h	mm	53 / 66	85 / 109	128 / 153
Stroke / jaw		mm (inch)	12.7 (0.5")	24 (0.94")	25 (0.98")
Pressure min. / max.		bar (psi)	2 / 10 (29 / 145)	2 / 10 (29 / 145)	2 / 10 (29 / 145)
Piston area		cm ²	290	486	652
Max. gripping force at 6 bar (closing)		kN (lbf)	20 (4496)	31 (6969)	40 (8992)
Air consumption / jaw stroke at 6 bar		liter	5.5	13.5	21
Weight (without top jaws)		kg (lbs)	53 (11915)	115 (25853)	260 (58450)

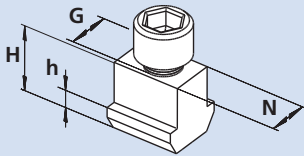
- Top jaws
- T-nuts

MWB-D / MAB-D
Soft top jaws



Chuck Type	CC 240 Z	CC 350 Z	CC 470 Z
Jaw type	MWB-D 240	MWB-D 250	MAB-D 2505
Jaw Id. No. (set)	233462	013491	081603
B	40	50	60
H	80	80	120
L	90	120	155
N	17	21	25.5
Serration	1/16" x 90°	1/16" x 90°	3/32" x 90°
a	20	62	94
b	22	28	35
kg / set	4.2	10.5	21.5

NST
T-nuts



Chuck Type	CC 240 Z	CC 350 Z	CC 470 Z
T-nut type	NST 17-4	NST 21-5	NST 21-5
T-nut Id. No. / piece	013864	033429	014812
N	17	21	25.5
H	26.5	30	29
h	9.5	11	11
G	M12	M16	M20
Bolt ISO 4762 12.9	M12 x 30	M16 x 35	M20 x 40

