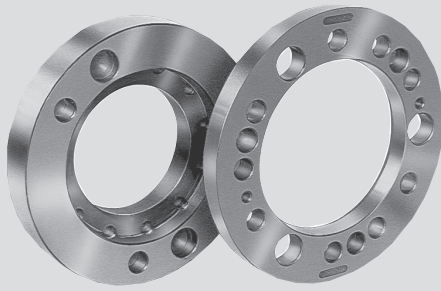


Chuck flanges

DIN 55026 / ISO-A 702/1

Mounting flanges on short taper spindle noses

- Direct and indirect mounting
- Reduction and extension flanges



Application/customer benefits

- Chuck flanges for short taper mount spindles (DIN 55026 / ISO-A 702/1)
- Easy installation of chucks on the machine spindle

Flange FF 1 = Direct mounting

Flange FF 2 = Reduction of taper

Flange FF 3 = Increase of taper

Technical data

- Case hardened flanges (up to $\varnothing 220$)
- High precision grinding of the taper and all reference dimensions

Standard equipment

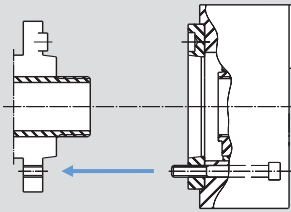
Fixing bolts of the indirect mounting flange on the spindle nose

Ordering example

Direct flange FF 1 A6 Id. No. 24162000

or

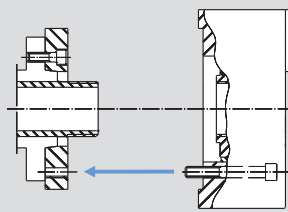
Reduction flange FF 2 A5 Id. No. 24152000



■ Flange FF 1 - direct mounting

Flange mounted onto the chuck.

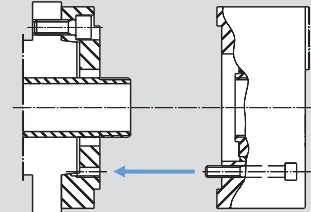
The chuck is directly mounted onto the spindle nose.



■ Flange FF 2 - reduced mounting

Used when the spindle nose is smaller than the standard one on the chuck.

The flange is mounted onto the spindle prior to the chuck.



■ Flange FF 3 - extended mounting

Used when the spindle nose is bigger than the standard one on the chuck.

The flange is mounted onto the spindle prior to the chuck.

The easy way to adapt your SMW-AUTOBLOK chuck to your machine spindle

Chuck \varnothing	Chuck models											Flange FF 1		Flange FF 2		Flange FF 3		
	AN-, AL-, FRC (1) AP-, NT-, FRS(1)	APL-, NTL-	IN-, IL-, IR-, PTF	2CL-, RAN	BH-, BP-, BB-,	GSA	BH-FC, TPT-	KNCS-, HFK-N	TSF-, TSR-, TX-, TE-	TSB-, TSB-CP	IEP-	Spindle nose	Flange Id. number	Spindle nose	Flange Id. number	Spindle nose	Flange Id. number	
125	●										A4	24141300	-	-	-	-	-	
130 / 135					●						A5	075421	-	-	-	-	-	
140 Z120					●			●			A5	24151400	A4	24141400	-	-	A6	24161410
140 Z130					●						A5	24151600	A4	24141600	-	-	A6	24161610
160 / 165	●			●	●		●				A5	24151700*	A4	24141700	-	-	A8	24181710
170 Z140	●							●			A6	24161720	A5	24151720	-	-	A8	24181720
170 Z160											A6	24161720	A5	24151720	-	-	A8	24181720
175					●						A6	24161720	A5	24151720	-	-	A8	24181720
200				●							A6	24161720	A5	24151720	-	-	A8	24181720
210 / 215	●				●		●	●	●		A6	24162000	A5	24152000	-	-	A8	24182010
220 / 225					●			●		●	A6	24162500*	A5	24152000	-	-	A8	24182010
260 Z170										●	A6	24162500*	A5	24152000	-	-	A8	24182010
250	●			●	●		●	●	●		A8	24182500	A6	24162530	A5	24152500	A11	24112510
260 Z220	●			●	●	●		●	●	●	A8	24182510*	A6	24162530	A5	24152500	A11	24112510
315 Z220	●			●	●			●	●	●	A8	24182510*	A6	24162530	A5	24152500	A11	24112510
320 Z280						●			●		A11	24113500	A6	24163500				
315 / 320					●		●	●	●		A11	24113500	A6	24163500				
330 Z300										●	A11	24113100	A8	24183100	A6	24163100	A15	24123110
400 Z300	●				●		●	●	●	●	A11	24113110*	A8	24183100	A6	24163100	A15	24123110
450 Z300	●				●		●	●	●	●	A11	24113110*	A8	24183100	A6	24163100	A15	24123110
500 Z300								●	●	●	A11	24113110*	A8	24183100	A6	24163100	A15	24123110
400 Z380								●	●	●	A15	24125000	A11	24115000	A8	24185000	A20	24175000
480 Z380						●			●	●	A15	24127100*	A11	24115000	A8	24185000	A20	24175000
500 Z380	●	●	●		●		●	●		●	A15	24127100*	A11	24115000	A8	24185000	A20	24175000
630 Z380	●	●	●		●		●	●		●	A15	24127100*	A11	24115000	A8	24185000	A20	24175000
800 Z380			●								A15	24127100*	A11	24115000	A8	24185000	A20	24175000
630 / 800	●	●	●		●					●	A15	24127100*	A11	24115000	A8	24185000	A20	24175000
1000 Z520		●	●							●	A20	24178000	A15	24126100	A11	24116100	-	-
1250 Z520			●								A20	24178000	A15	24126100	A11	24116100	-	-
1400 Z720			●								A20	24178000	A15	24126100	A11	24116100	-	-
1600 Z720			●								A20	24178000	A15	24126100	A11	24116100	-	-
1800 Z720			●								A20	24178000	A15	24126100	A11	24116100	-	-
2000 Z720			●								A20	24178000	A15	24126100	A11	24116100	-	-

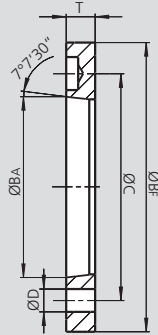
* **Suggestion:** This flange is thicker than the standard one, to be used only if necessary!

Note (1): For 285 FRC / FRS see 250 AN-, for 365 FRC/FRS see 400 AN-

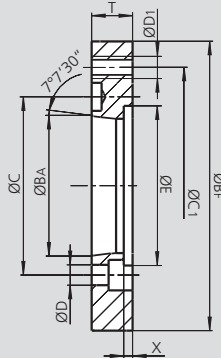
- Direct and indirect mounting
- Reduction and extension flanges

DIN 55026 / ISO-A 702/1

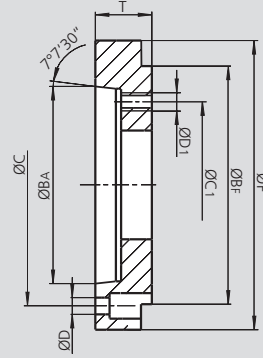
Type FF 1
ISO-A direct mounting



Type FF 2
ISO-A reduced mounting



Type FF 3
ISO-A extended mounting



Subject to technical changes

Flange type FF 1

Flange Id. No.	Spindle nose	BF mm	BA mm	C mm	D mm	T mm	Weight kg
24141300	A4	115	63.513	82.6	11.5	13	0.6
075421	A5	120	82.563	104.8	10.5	16	0.7
24151400	A5	130	82.563	104.8	11.5	15	0.75
24151600	A5	140	82.563	104.8	11.5	15	1
24151700*	A5	140	82.563	104.8	11.5	24	1.5
24161720	A6	160	106.375	133.4	13.5	17	1.2
24162000	A6	170	106.375	133.4	13.5	17	1.5
24162500*	A6	170	106.375	133.4	13.5	24	2.2
24182500	A8	220	139.719	171.4	17	19	2.7
24182510*	A8	220	139.719	171.4	17	27	4
24183050	A8	280	139.719	171.4	17	19	6.5
24113100	A11	300	196.869	235	21	21	5.5
24113110*	A11	300	196.869	235	21	30	8
24113500	A11	280	196.869	235	21	21	4
24125000	A15	380	285.775	330.2	25	23	8
24127100*	A15	380	285.775	330.2	25	33	11.5
24178000	A20	520	412.775	463.6	27	25	14.5

* Suggestion: This flange is thicker than the standard one, to be used only if necessary!

Flange type FF 2

Flange Id. No.	Spindle nose	BF mm	BA mm	C mm	D mm	C1 mm	D1 mm	E mm	X mm	T mm	Weight kg
24141400	A4	130	63.513	82.6	11.5	104.8	M10	-	-	20	1.2
24141600	A4	140	63.513	82.6	11.5	104.8	M10	-	-	20	1.6
24151720	A5	160	82.563	104.8	11.5	133.4	M12	-	-	24	2.2
24152000	A5	170	82.563	104.8	11.5	133.4	M12	-	-	24	2.7
24152500	A5	220	82.563	104.8	11.5	171.4	M16	-	-	24	5.5
24162530	A6	220	106.375	133.4	13.5	171.4	M16	-	-	24	5
24163100	A6	300	106.375	133.4	13.5	235	M20	155	10	30	11
24163500	A6	280	106.375	133.4	13.5	235	M20	-	-	30	9
24183100	A8	300	139.719	171.4	17	235	M20	-	-	30	11.5
24184000*	A8	300	139.719	171.4	17	235	M20	155	10	40	15.5
24185000	A8	380	139.719	171.4	17	330.2	M24	197	10	40	24
24115000	A11	380	196.869	235	21	330.2	M24	197	10	40	21
24116100	A11	520	196.869	235	21	463.6	M24	267	12	45	54
24126100	A15	520	285.775	330.2	25	463.6	M24	-	-	40	40
24179400	A20	720	412.775	463.6	27	647.6	M30	-	-	50	93

* Suggestion: This flange is thicker than the standard one, to be used only if necessary!

Flange type FF 3

Flange Id. No.	Spindle nose	BF mm	BA mm	C mm	D mm	C1 mm	D1 mm	F mm	T mm	Weight kg
24151310	A5	115	82.563	104.8	11.5	82.6	M10	127	30	1.7
24161310	A6	115	106.375	133.4	13.5	82.6	M10	165	35	3.5
24161410	A6	130	106.375	133.4	13.5	104.8	M10	165	35	3.4
24161610	A6	140	106.375	133.4	13.5	104.8	M10	165	35	3.3
24181710	A8	140	139.719	171.4	17	104.8	M10	210	35	5.2
24181720	A8	160	139.719	171.4	17	133.4	M12	210	40	5.8
24182010	A8	170	139.719	171.4	17	133.4	M12	210	40	6.2
24112510	A11	220	196.869	235	21	171.4	M16	280	45	11.8
24123110	A15	300	285.775	330.2	25	235	M20	380	50	22
24175000	A20	380	412.777	463.6	27	330.2	M24	520	58	55