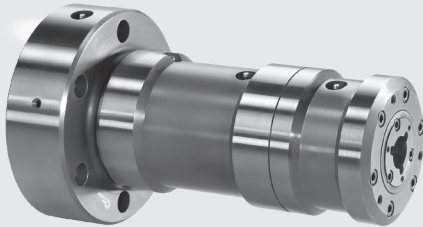
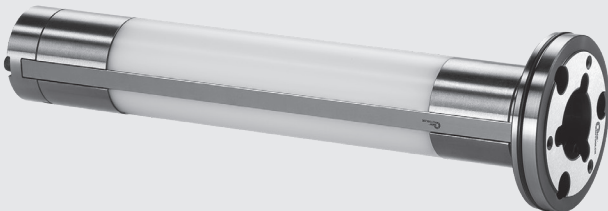
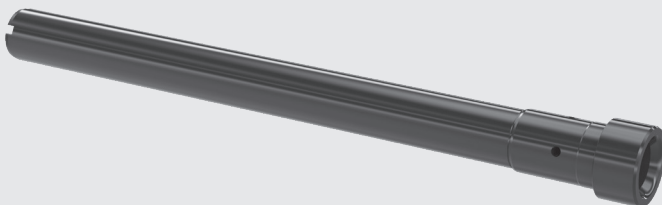
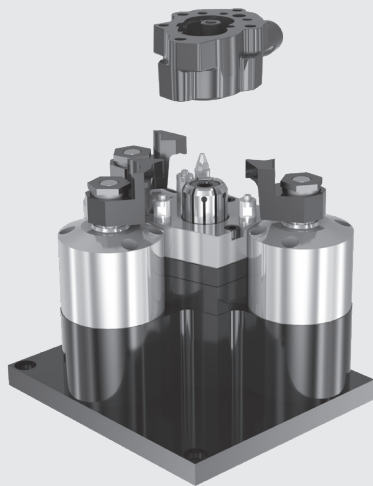
**Application/customer benefits**

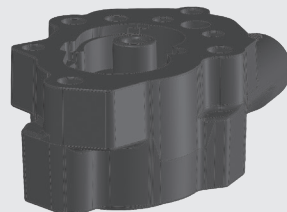
- Power operated sliding jaw collet chuck
- 2 clamping areas
- Spring compensation
- For clamping of shafts on 2 clamping levels
- Preparation for air sensing
- Exchangeable cartridge with adapter sleeve

Sliding jaw collet chuck**Exchangeable cartridge with adapter sleeve****Work piece: Camshaft tube**

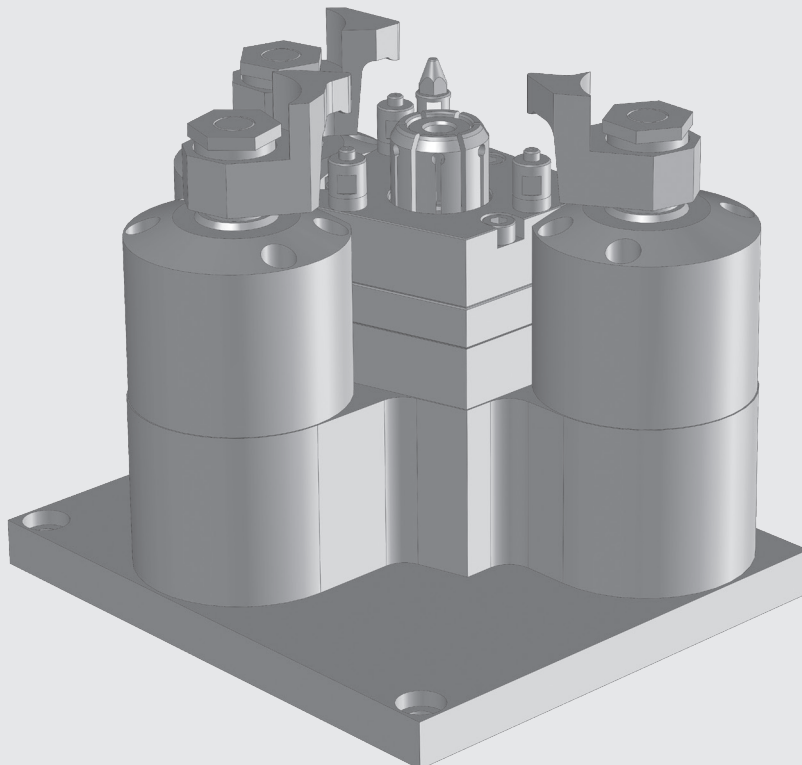


Application/customer benefits

- Hydraulic, power operated, stationary clamping via adapter sleeve in inner diameter (center of the case) without pull down with additional, hydraulic operated rotating collet fingers for pull down against 3-point-surface with position orientation and air sensing
- For drilling and milling at case

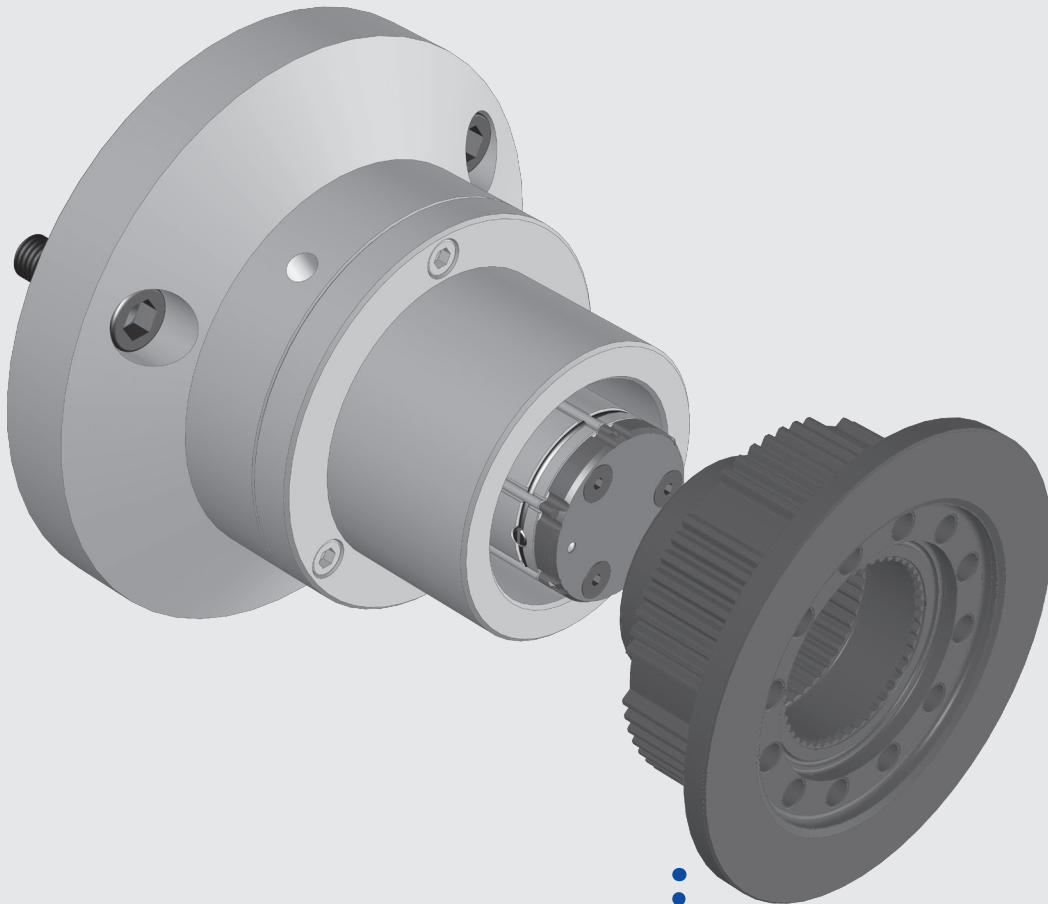
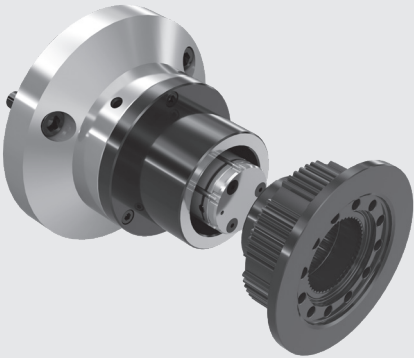


..... Work piece:
Pump housing

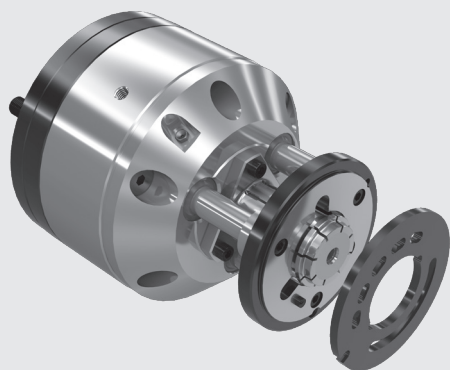


Application/customer benefits

- Power operated, centric clamping via sliding jaws in the internal gearing without pull down
- For hard turning of the outer contour of a work piece with very high accuracy and repeatability
- Power operated clamping with profiled jaws
- High repeatability $<0,005$
- Insensitive to contamination
- Low maintenance

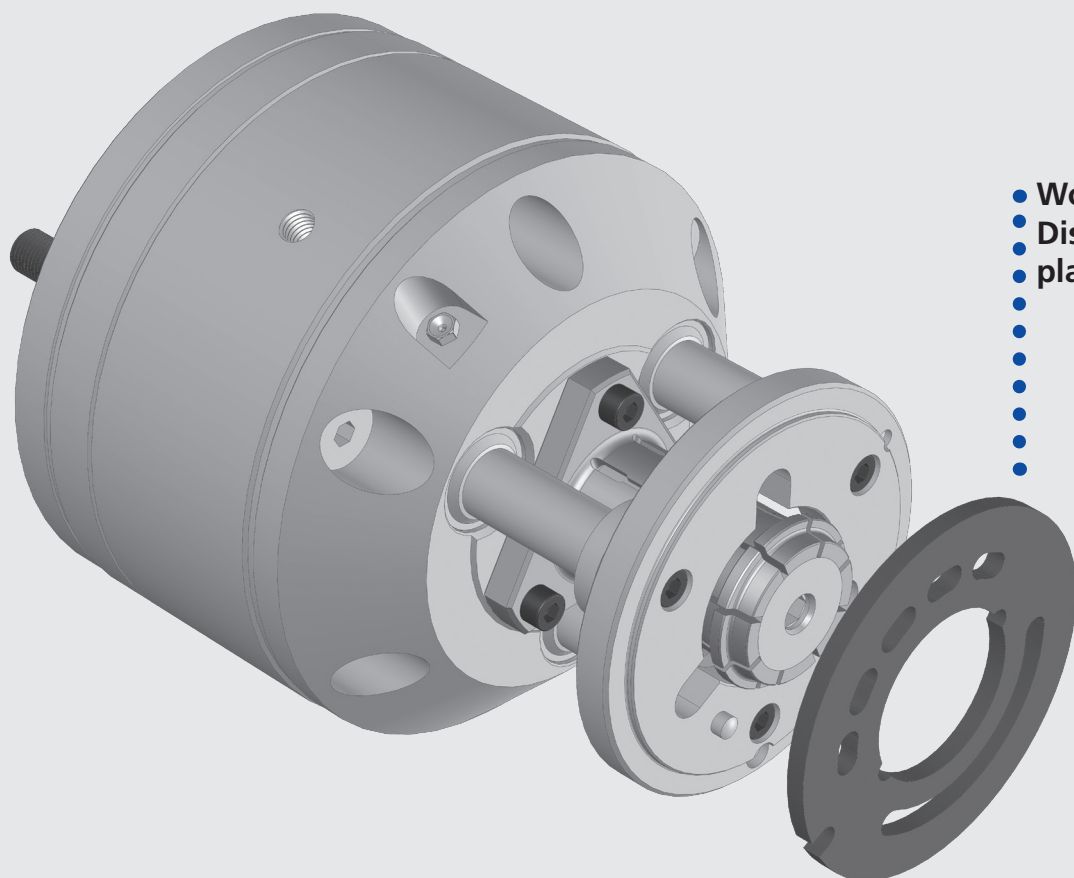


Work piece:
Hub flange



Application/customer benefits

- Power operated, very short centric clamping via clamping sleeves in inner diameter without pull down with retractable stop and position orientation
- For rough cut turning of the frontside and outer diameter, plan sided drilling operations and following finish of the complete outer contour incl. both plan sides through retractable stop
- Power operated clamping with expanding sleeve
- Without pull down
- With retractable stop
- Two-sided plan processing possible

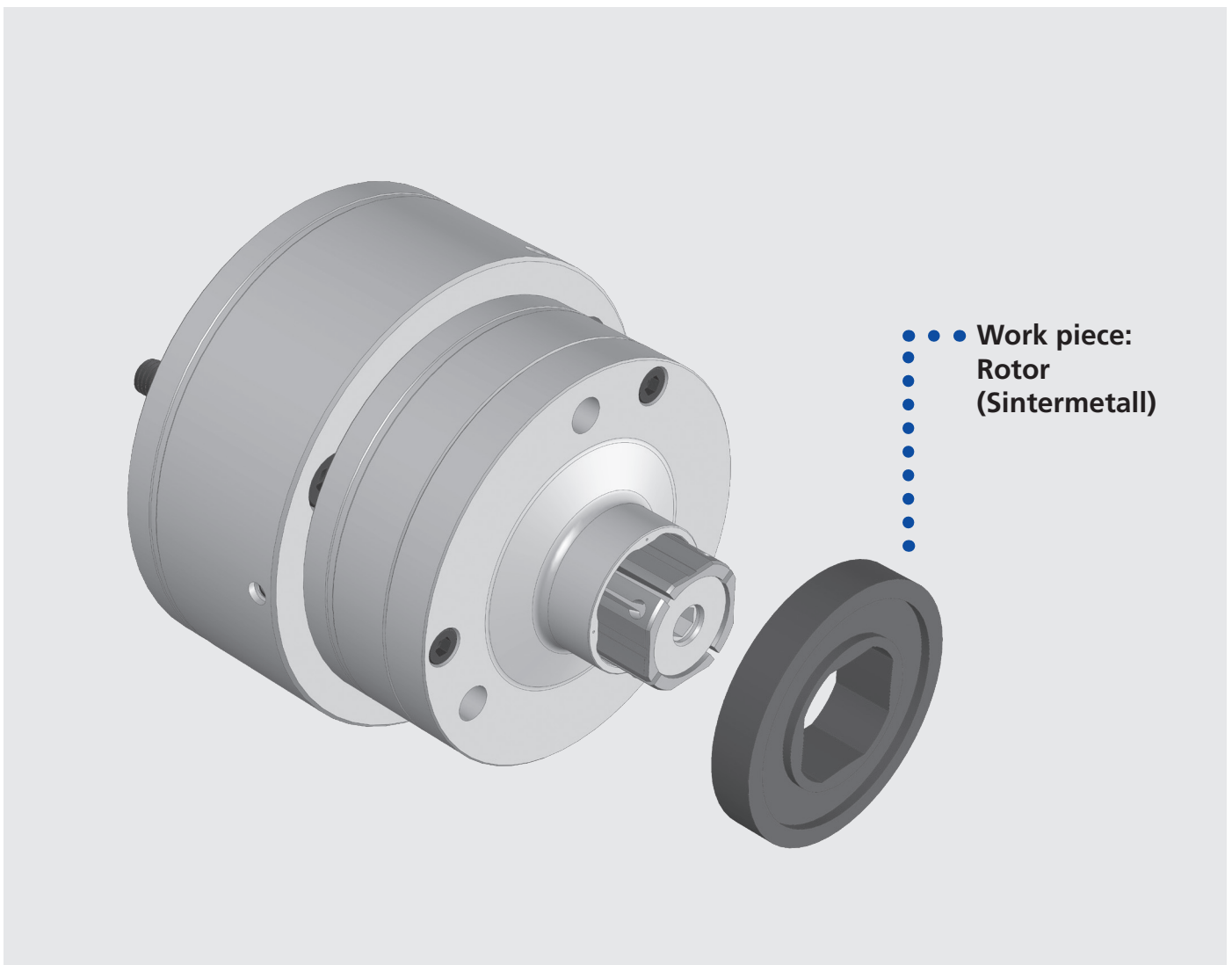


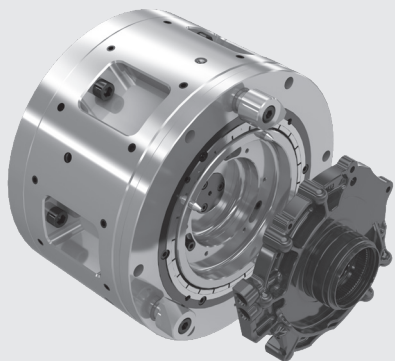
- Work piece:
- Distribution plate



Application/customer benefits

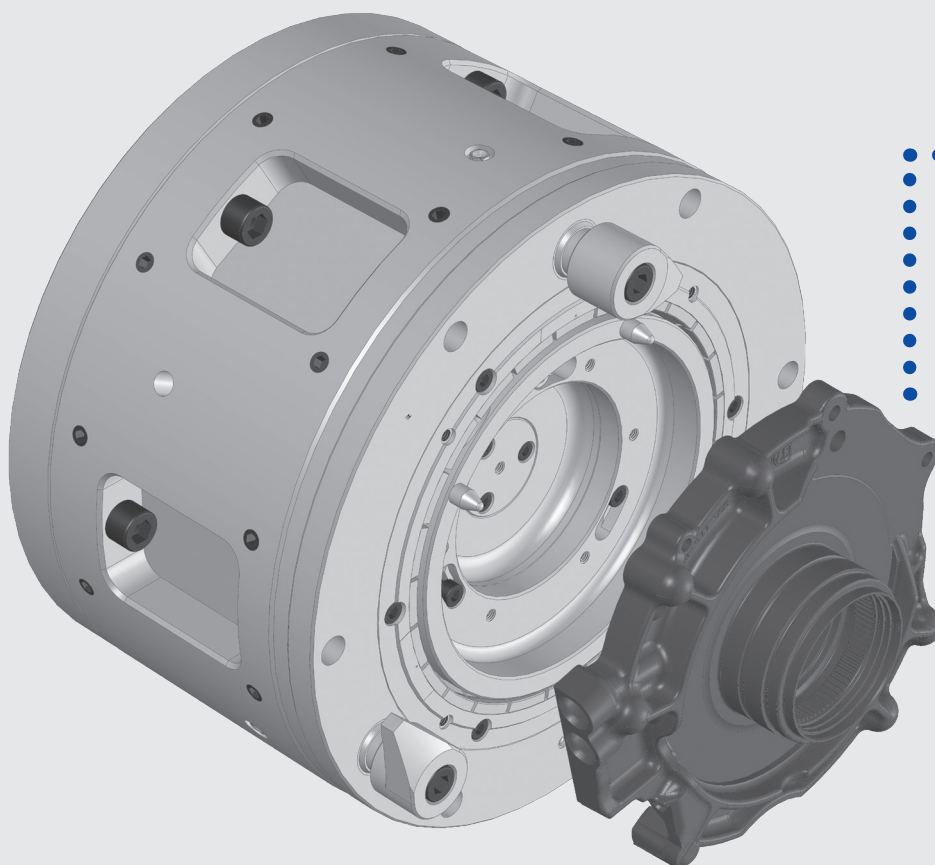
- Power operated, centric clamping via clamping sleeve in a spherical 4-Square inner contour with air sensing
- For processing of the outer contour of a Sintermetall work piece with profiled inner contour
- Power operated clamping with profiled sleeve
- Without axial components
- Two-sided plan processing possible





Application/customer benefits

- Pneumatic, power operated centering via collet chuck in outer diameter with pull down with additional, power operated pivot fingers with pull down against the stop, with position orientation, air purge and air sensing
- For central turning of non-symmetrical cases
- Position orientation without deforming the work piece
- Pneumatic centering with collet chuck
- Power operated plan clamping with plan collet fingers
- Position orientation
- High repeatability
- Huge machining forces
- Insensitive to contamination



- • • Work piece:
Bearing support