

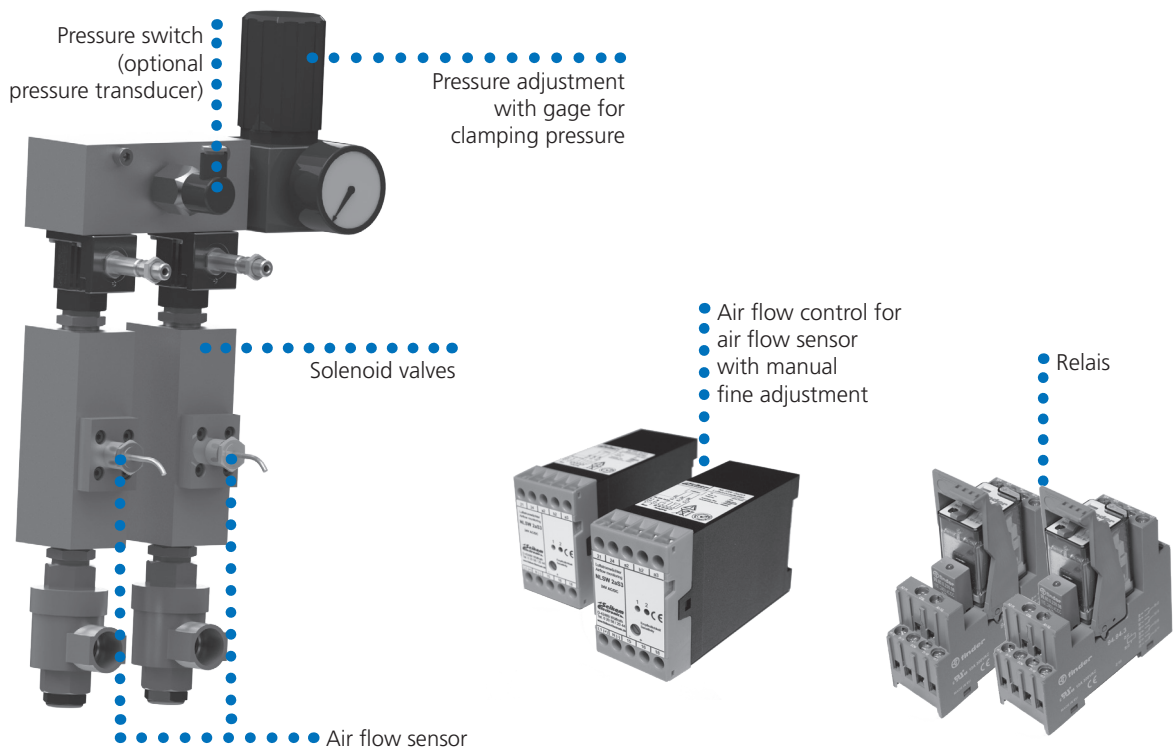
# AC-BB

Safety control unit for SP and Big Bore chucks

- Electronic safety control unit
- For SP and Big Bore chucks
- Without pressure control
- Without stroke control

## Electropneumatic control unit for SP and Big Bore® chucks

- 1/2" or 3/4" design for SP and Big Bore chucks
- Actuation via foot pedal or push button (not included in the supply range)
- Clamping control via air flow sensors
- Quick chuck actuation via diaphragm valves with quick exhaust
- Airflow control with LED for ready and air flow. Adjustable air flow sensor sensitivity



SMW-AUTOBLOK Type	Voltage	Size	Id. No.
AC-BB	24 V	1/2"	202342
AC-BB	110 V	1/2"	202343
AC-BB	220 V	1/2"	202344
AC-BB	24 V	3/4"	202837
AC-BB	110 V	3/4"	202838
AC-BB	220 V	3/4"	202839

### Standard equipment:

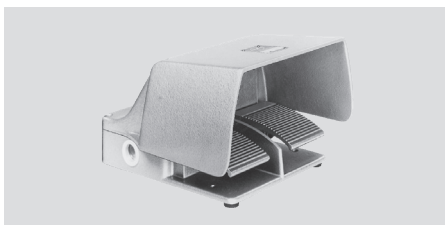
as shown, without hoses and fittings

### Approx. dimensions (w x h x d)

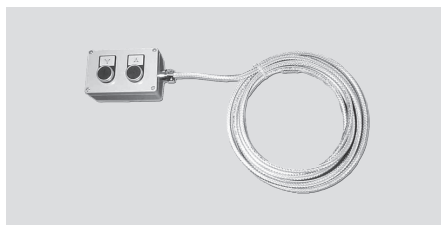
222 x 465 x 128 mm

### Accessories:

**Foot pedal F2** with 4 m cable  
Id. No. 013324



**Push button** with 5 m cable  
Id. No. 192942



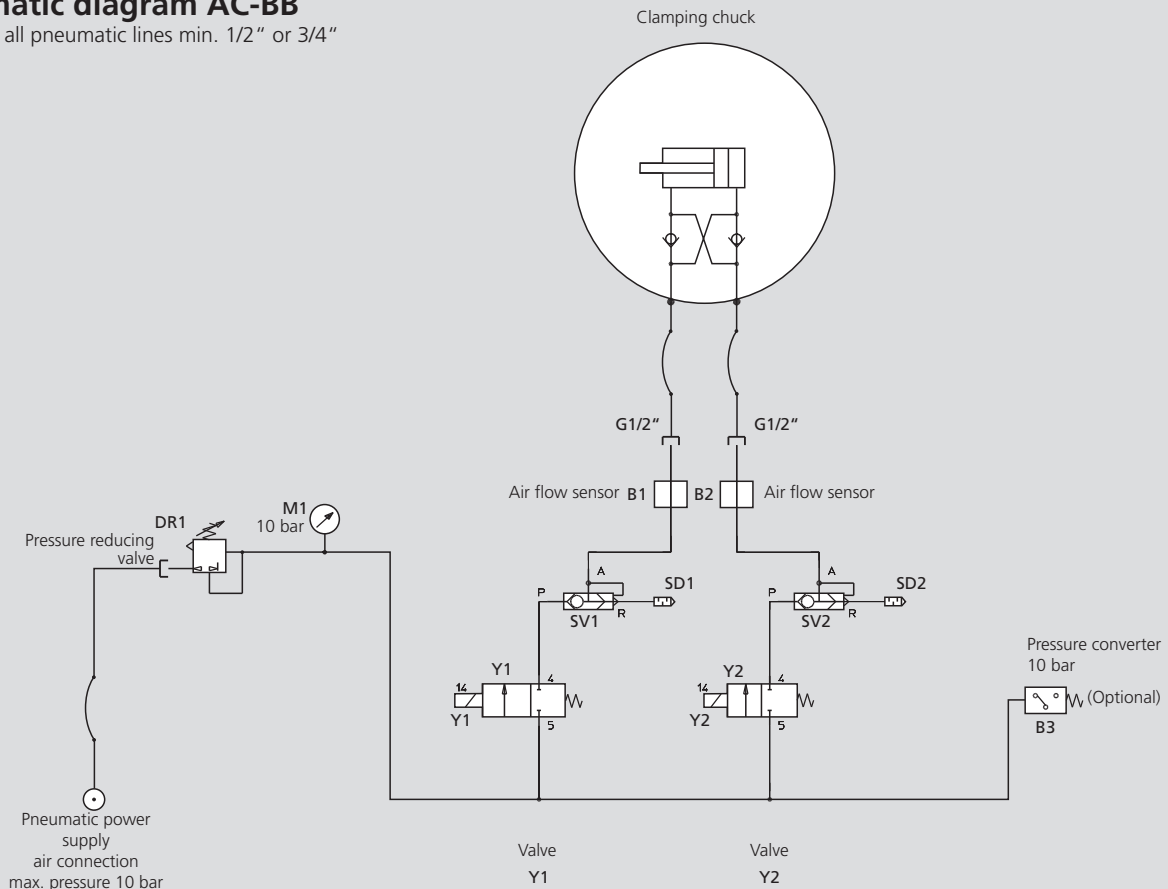
**Air service unit**  
Id. No. 1/2" 192074,  
Id. No. 3/4" 199790



- Pneumatic diagram
- Wiring diagram

## Pneumatic diagram AC-BB

△ Size of all pneumatic lines min. 1/2" or 3/4"



## Wiring diagram AC-BB

