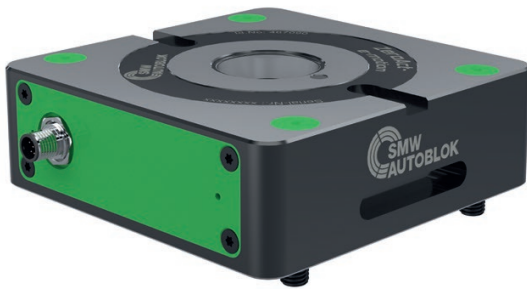


ZERO-ACT e-motion

Electromechanic zero point system



Technical features

- Pull-down force 15 kN
- Repeatability < 5 µm
- Holding force 35 / 50 / 75 kN (M10 / M12 / M16) depending on thread of clamping pin
- 2 holding slides for maximum hold while clamping
- Connection M12 x 1 8 - pole for power and signals
- proofline® = fully sealed - low maintenance

Applications/Customer benefits

- Mechatronic actuation
- Safety sensors integrated
- Can be automated
- e-sensing: inductive workpiece detection
- 100% electric, ideal for measuring machines and clean room applications
- Large Z-travel due to flat design (48 mm)
- High flexibility as the clamping bolts are compatible with APS / WPS / ZeroAct
- Mechanical self-locking in the clamped position
- Orientation keyways

CLAMPING PLATE

Clamping bolts
(suitable to APS / WPS / ZeroAct)

e-sensing: inductive
workpiece detection

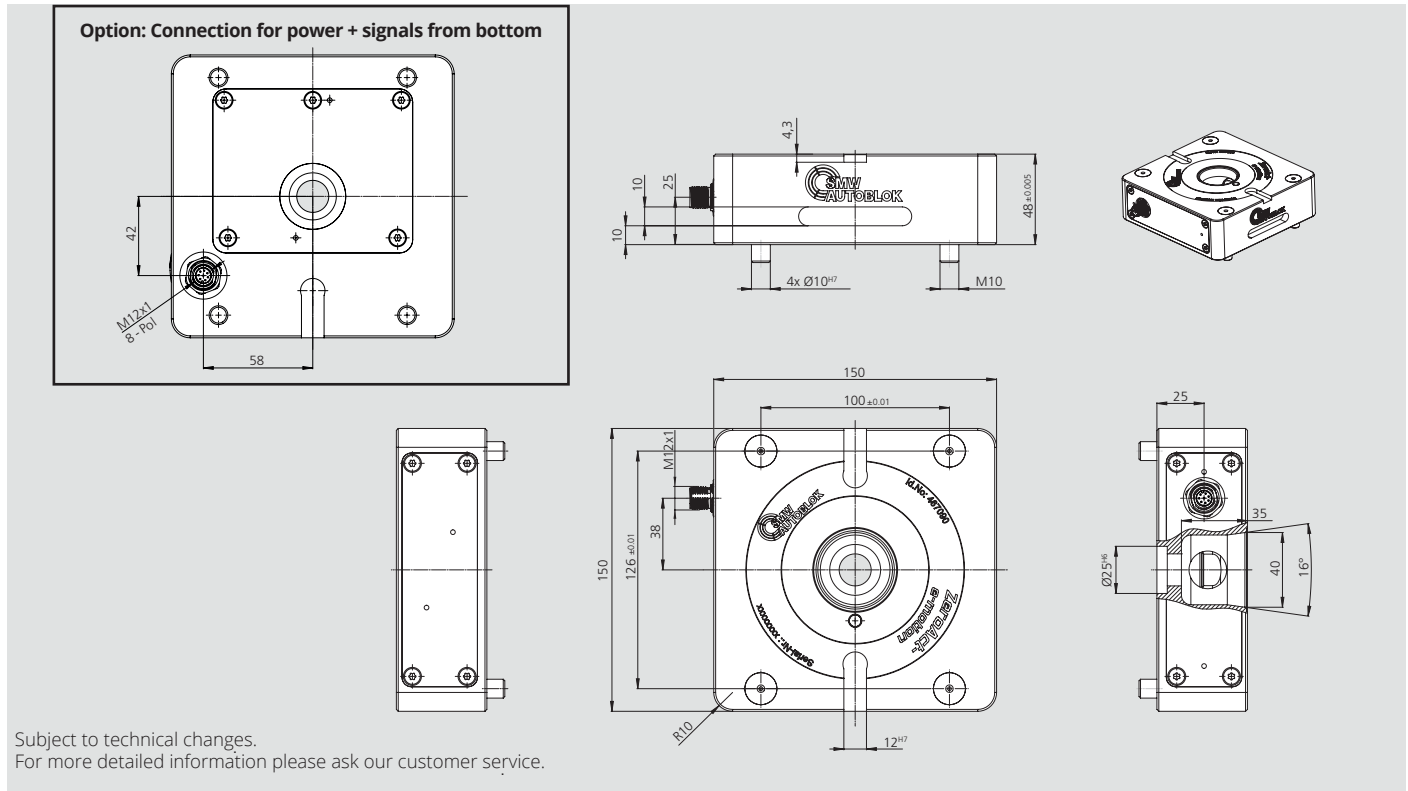
Integrated
control unit

Connection for
power + signals from the side
or from bottom

Sensoric for signals
„clamped“ or „unclamped“

ZERO-ACT e-motion

Electromechanic zero point system



SMW-Autoblok TYPE		ZeroAct e-motion
Id.No.		467090
Pull-down force	kN	15
Repeatability	mm	< 0.005
Holding force clamping pin M10	kN	35
Holding force clamping pin M12	kN	50
Holding force clamping pin M16	kN	75
Weight	kg	7
Current consumption / voltage		2A
Pin 1		+ 24 VDC (2A)
Pin 2		GND
Pin 3		n.c.
Pin 4		Set to unclamp
Pin 5		Set to clamp
Pin 6		Status opened
Pin 7		Status clamped
Pin 8		Status e-sensing