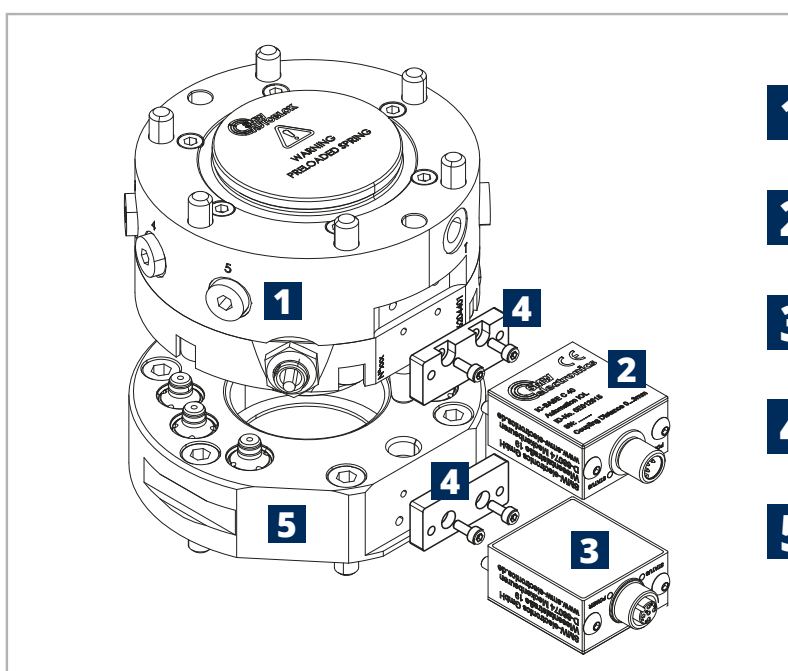


PRS

Robot quick change systems

CUSTOMER BENEFITS

- ▶ Quick and safe gripper change
- ▶ ISO flange
- ▶ Pneumatic drive
- ▶ Self-locking by spring tension (turbo)
- ▶ Wear-free and maintenance-free contactless transmission system for energy and signals (optional)
- ▶ Integrated interlock status query



- 1** QUICK CHANGE MODULE ROBOT SIDE
- 2** CONNECTION MODULES / INDUCTIVE COUPLING BASE UNIT
- 3** CONNECTION MODULES / INDUCTIVE COUPLING REMOTE UNIT
- 4** MOUNTING KIT
- 5** QUICK CHANGE MODULE TOOL SIDE



SMW-Autoblok TYPE	Size					Id.n. without pallet	n. pneumatic connections		Stroke control: Inductive and analogic proximity-based	Pneumatic opening	Springs clamp + TURBO	Electric signal interface module (optional)
	55	85	110	160	240		6	7				
PRS	55					46204550						
		85				46204600						
			110			46204400						
				160		46204320						
					240	46204500						



CLAMPING EXAMPLE

Energy
Signals

Id.n. PRS	Max liftable weight	Repeatability 0,015 mm	Pull-down force		Pressure		Weight
			spring	spring + TURBO	open	TURBO	
46204550	20 kg	0,015	70 daN	340 daN	6 bar	6 bar	0,5 kg
46204600	50 kg	0,015	200 daN	1000 daN	6 bar	6 bar	1,3 kg
46204400	75 kg	0,015	250 daN	1400 daN	6 bar	6 bar	3 Kg
46204320	150 kg	0,015	400 daN	1900 daN	6 bar	6 bar	6 Kg
46204500	500 kg	0,015	1250 daN	7600 daN	6 bar	6 bar	16 Kg

160 PRS HEAD CHANGING

- Pneumatic operation
- Spring clamping + TURBO

Function

Automatic head/gripper changing system for robots

Technical features

- Body and internal mechanism case-hardened for higher rigidity and longer life
- Analogic inductive stroke control system via proximity (as standard)
- Pneumatic opening

- Spring clamp + TURBO
- Electric signal interface module (optional)
- n.7 pneumatic connectors for media trasmission between the changing unit and the gripper mounting on it*

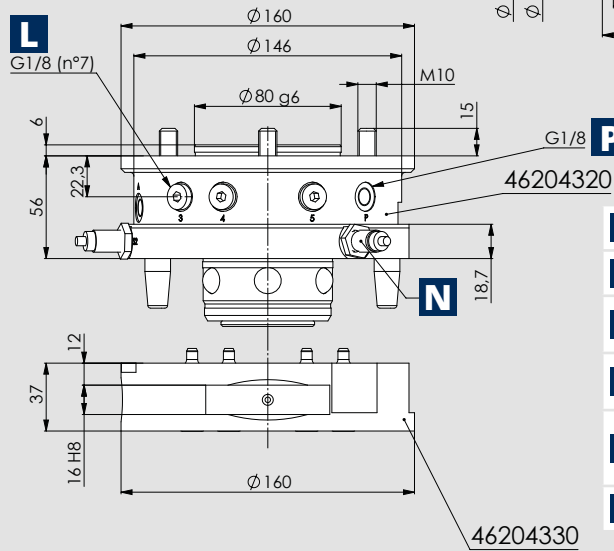
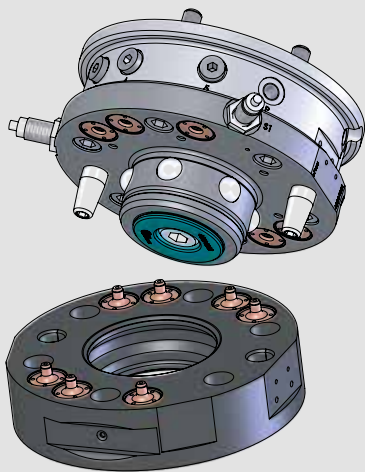
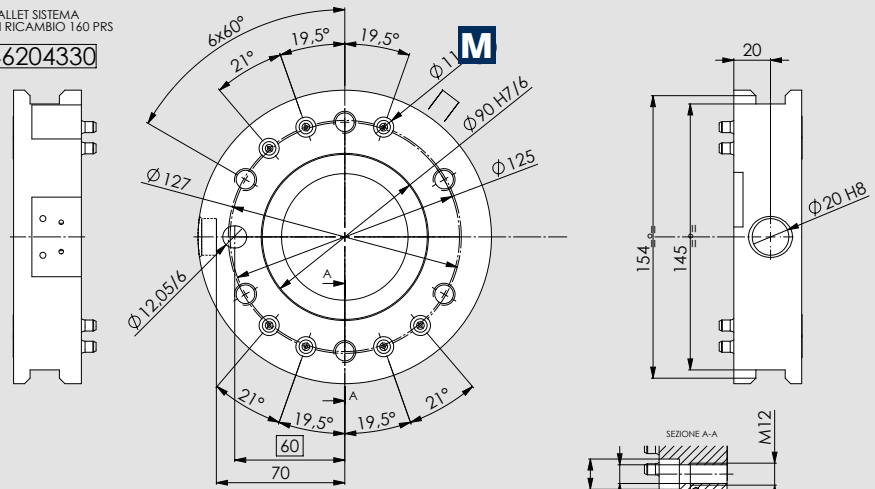
* couplers prepared for pneumatic use; for eventual hydraulic use, request a separate quotation.

Model	without pallet Id.n.	Max liftable weight	Repeatability	pneumatic connections n.	Pull-down force		Pressure		Weight
					spring	spring+TURBO	open	TURBO	
160PRS	46204320	150 Kg	0,015 mm	7	4 KN	19 KN	6 bar	6 bar	6 Kg
Model			Pallet			Weight			
PALLET SISTEMA DI RICAMBIO 160PRS			46204330			4,3 Kg			

MOMENTS OF INERTIA

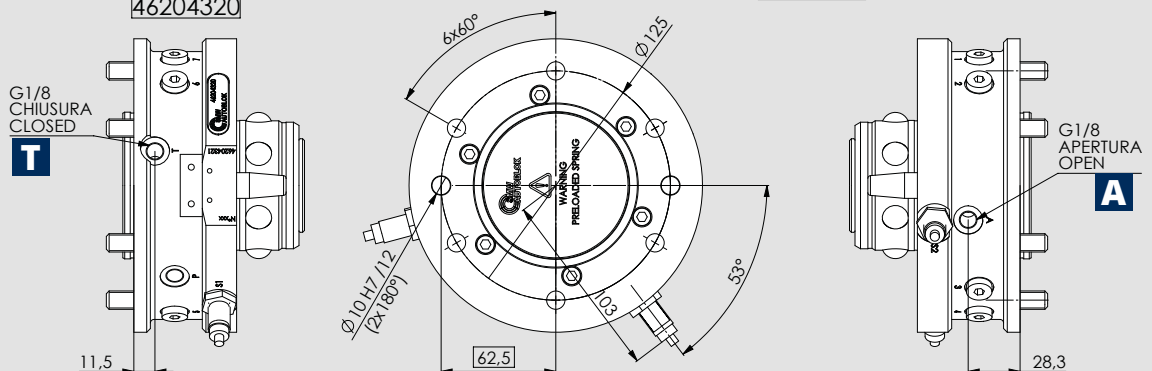
- M_x max. 2.500 Nm
- M_y max. 2.500 Nm
- M_z max. 2.350 Nm

PALLET SISTEMA DI RICAMBIO 160 PRS
46204330

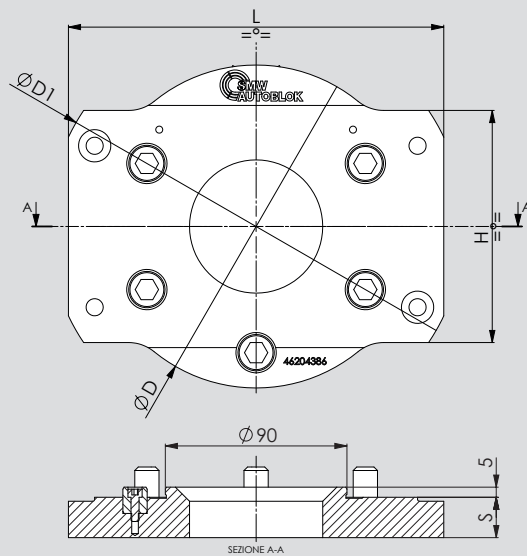


A	CHANGE UNIT PORT OPENING
T	CHANGE UNIT PORT TURBO
L	N.7 INLET PNEUMATIC CONNECTIONS (NUMBERED FROM 1 TO 7)
M	7 PNEUMATIC CONNECTIONS OUTLET
N	CHANGE UNIT STROKE CONTROL INDUCTIVE AND ANALOGIC PROXIMITY OPTIONAL-NOT INCLUDED
P	AIR SENSING

160 PRS SISTEMA DI RICAMBIO SENZA PALLET
46204320



FLANGE KIT for pneumatic head changing 160 PRS



FLANGE KIT ID.No.	D	D1	S	H	L	WEIGHT kg	GRIPPER TYPE MONTABLE
46204382 FLANGE KIT 160PRS-2V/2PXM 160	160	160	20	/	/	1,1	2PXM 160 *
46204384 FLANGE KIT 160PRS-2V/2PXM 200	168	168	20	/	/	1,2	2PXM 200 *
46204386 FLANGE KIT 160PRS-2V/2PXL 250	160	206	20	115	186	1,3	2PXL 250 *
46204362 FLANGE KIT 160 PRS-2V/PP - PL 160	160	160	21	/	/	1,1	PP - PL 160 **
46204364 FLANGE KIT 160 PRS-2V/PP - PL 200	160	190	21	98	/	1,3	PP - PL 200 **
46204366 FLANGE KIT 160 PRS-2V/PP - PL 250	160	212	21	120	/	1,5	PP - PL 250 **
46204372 FLANGE KIT 160 PRS-2V/3MN - 3PXM 160	166	166	20	/	/	1	3MN - 3PXM 160 ***
46204374 FLANGE KIT 160 PRS-2V/3MN - 3PXM 200	202	202	21	/	/	1,7	3MN - 3PXM 200 ***
46204376 FLANGE KIT 160 PRS-2V/3MN - 3PXL 250	232	232	21	/	/	2,3	3MN - 3PXL 250 ***

