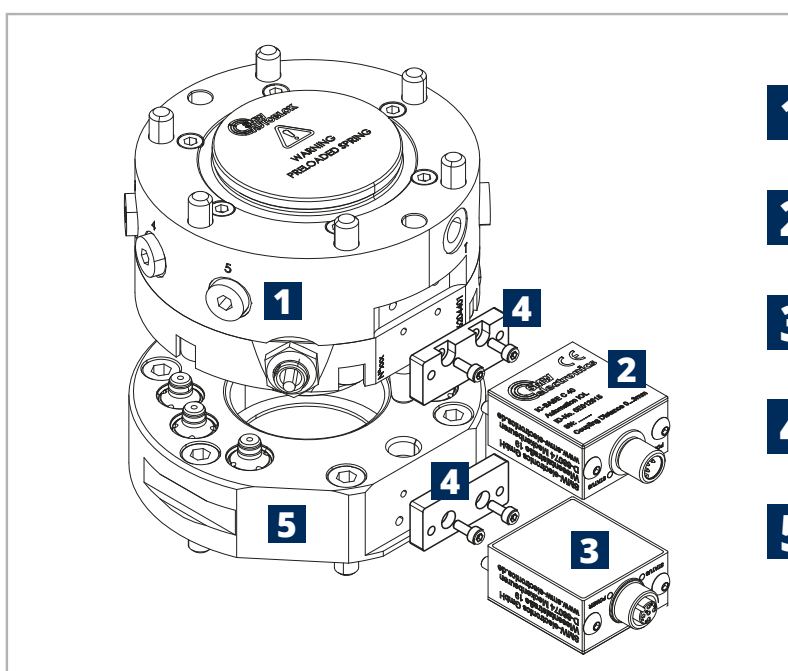


PRS

Robot quick change systems

CUSTOMER BENEFITS

- ▶ Quick and safe gripper change
- ▶ ISO flange
- ▶ Pneumatic drive
- ▶ Self-locking by spring tension (turbo)
- ▶ Wear-free and maintenance-free contactless transmission system for energy and signals (optional)
- ▶ Integrated interlock status query



- 1** QUICK CHANGE MODULE ROBOT SIDE
- 2** CONNECTION MODULES / INDUCTIVE COUPLING BASE UNIT
- 3** CONNECTION MODULES / INDUCTIVE COUPLING REMOTE UNIT
- 4** MOUNTING KIT
- 5** QUICK CHANGE MODULE TOOL SIDE



SMW-Autoblok TYPE	Size					Id.n. without pallet	n. pneumatic connections		Stroke control: Inductive and analogic proximity- based	Pneumatic opening	Springs clamp + TURBO	Electric signal interface module (optional)
	55	85	110	160	240		6	7				
PRS	55					46204550						
		85				46204600						
			110			46204400						
				160		46204320						
					240	46204500						



CLAMPING EXAMPLE

Id.n. PRS	Max liftable weight	Repeatability 0,015 mm	Pull-down force		Pressure		Weight
			spring	spring + TURBO	open	TURBO	
46204550	20 kg	0,015	70 daN	340 daN	6 bar	6 bar	0,5 kg
46204600	50 kg	0,015	200 daN	1000 daN	6 bar	6 bar	1,3 kg
46204400	75 kg	0,015	250 daN	1400 daN	6 bar	6 bar	3 Kg
46204320	150 kg	0,015	400 daN	1900 daN	6 bar	6 bar	6 Kg
46204500	500 kg	0,015	1250 daN	7600 daN	6 bar	6 bar	16 Kg

Drawings and data are subject to change by SMW-Autoblok.

240 PRS HEAD CHANGING

- Pneumatic operation
- Spring clamping + TURBO

Function

Automatic head/gripper changing system for robots

Technical features

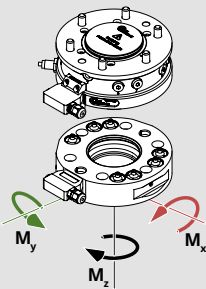
- Body and internal mechanism case-hardened for higher rigidity and longer life
- Analogic inductive stroke control system via proximity (as standard)
- Pneumatic opening

- Spring clamp + TURBO
- Electric signal interface module (optional)
- n.7 pneumatic connectors for media trasmission between the changing unit and the gripper mounting on it*

* couplers prepared for pneumatic use; for eventual hydraulic use, request a separate quotation.

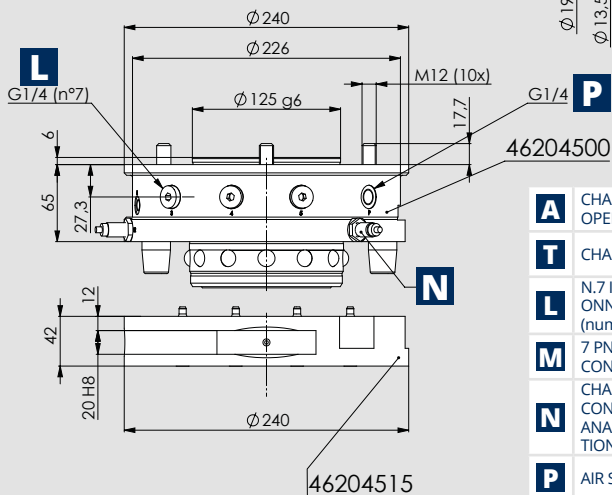
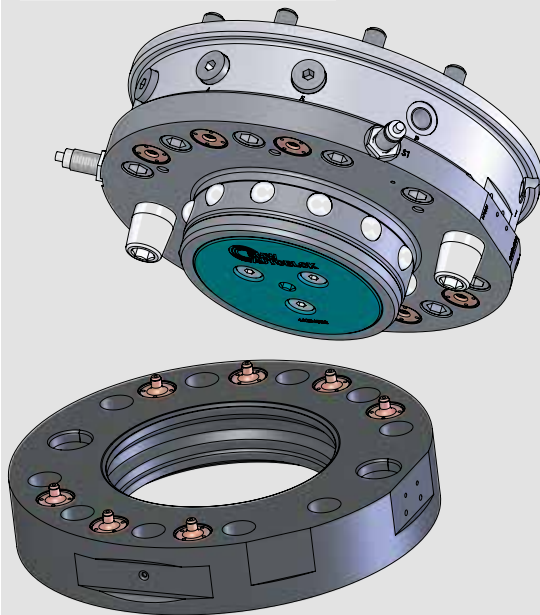
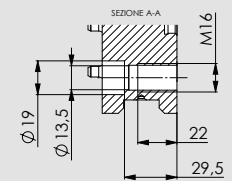
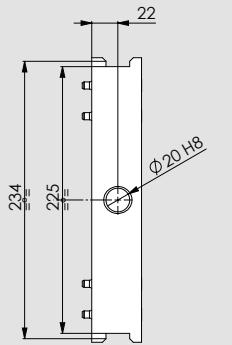
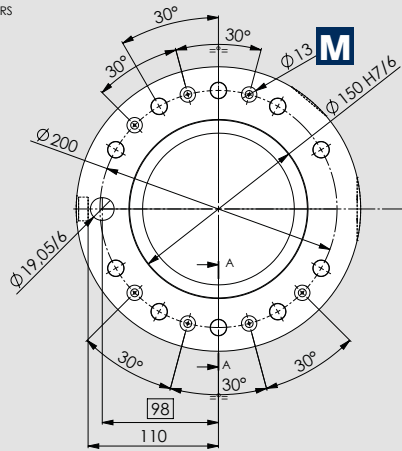
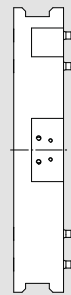
Model	without pallet Id.n.	Max liftable weight	Repeatability	pneumatic connections n.	Pull-down force		Pressure		Weight
					spring	spring+TURBO	open	TURBO	
240PRS	46204500	500Kg	0,015 mm	7	12,5 KN	76 KN	6 bar	6 bar	16 Kg
Model			Pallet			Weight			
QUICK PALLET CHANGE 240PRS			46204515			9,5 Kg			

MOMENTS OF INERTIA



- M_x max. 10.000 Nm
- M_y max. 10.000 Nm
- M_z max. 10.000 Nm

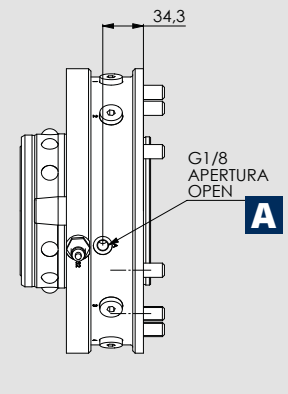
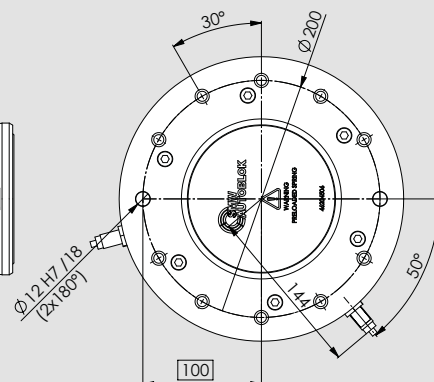
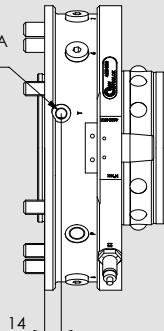
PALLET SISTEMA DI RICAMBIO 240 PRS
46204515



- A** CHANGE UNIT PORT OPENING
- T** CHANGE UNIT PORT TURBO
- L** N.7 INLET PNEUMATIC ONNECTIONS (numbered 1 to 7)
- M** 7 PNEUMATIC CONNECTIONS OUTLET
- N** CHANGE UNIT STROKE CONTROL INDUCTIVE AND ANALOGIC PROXIMITY OPTIONAL-NOT INCLUDED
- P** AIR SENSING

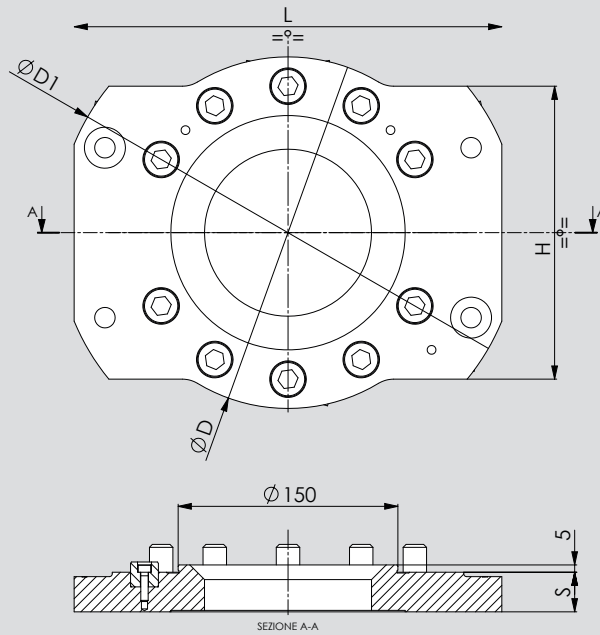
240 PRS SISTEMA DI RICAMBIO SENZA PALLET
46204500

G1/8 CHIUSURA CLOSED **T**

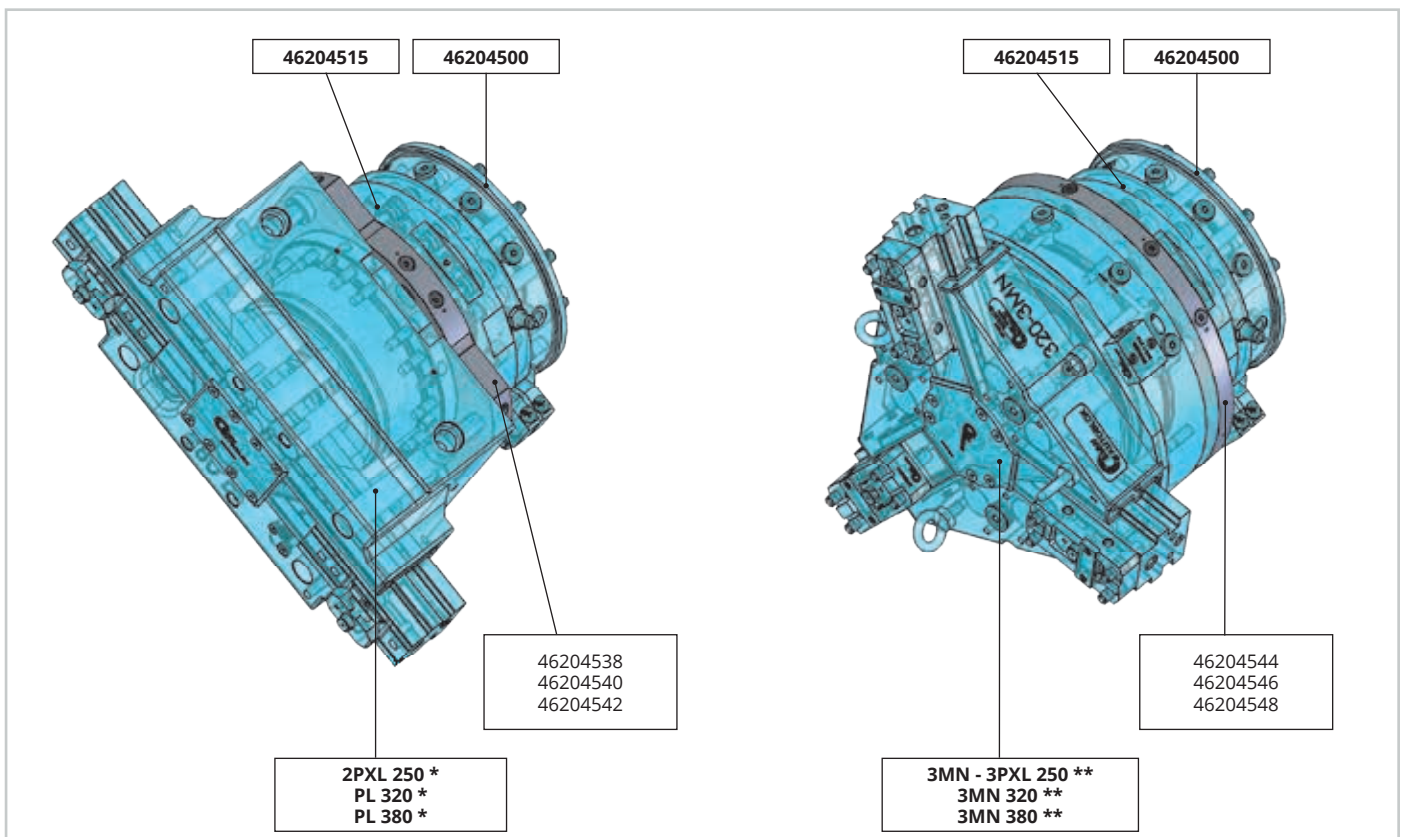


FLANGE GROUP

for head changing 240 PRS



FLANGE KIT Id.No.	D	D1	S	H	L	WEIGHT kg	GRIPPER TYPE MONTABLE
46204538 FLANGE KIT 240PRS/2PXL 250	240	240	23	/	/	2,9	2PXL 250 *
46204540 FLANGE KIT 240PRS/PL 320	240	240	27	/	/	3,2	PL 320 *
46204542 FLANGE KIT 240PRS/PL 380	240	316	27	200	292	4,2	PL 380 *
46204544 FLANGE KIT 240PRS/3MN - 3PXL 250	240	240	23	/	/	2,6	3MN - 3PXL 250 **
46204546 FLANGE KIT 240PRS/3MN 320	310	310	23	/	/	4,7	3MN 320 **
46204548 FLANGE KIT 240PRS/3MN 380	380	380	27	/	/	8,3	3MN 380 **



Drawings and data are subject to change by SMW-Autoblok.