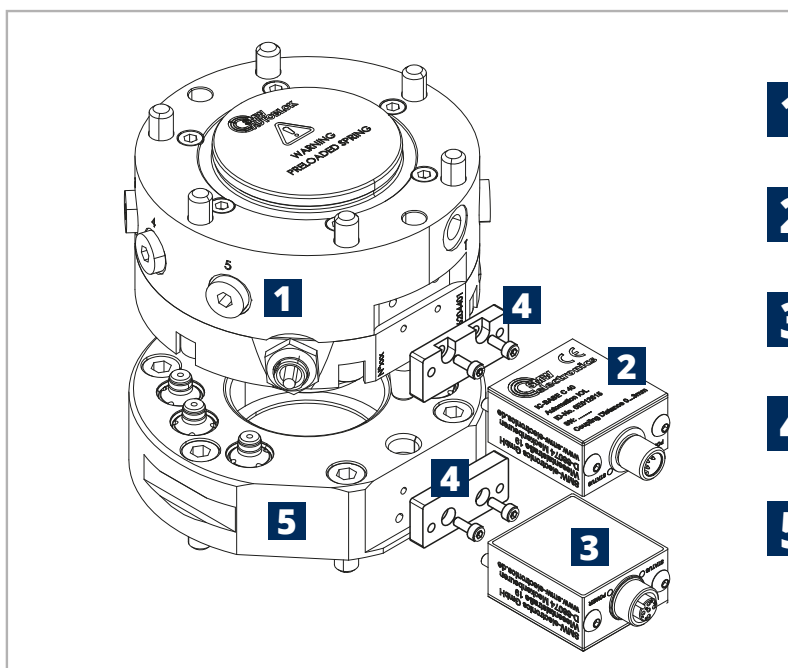


# PRS

## Robot quick change systems

### CUSTOMER BENEFITS

- ▶ Quick and safe gripper change
- ▶ ISO flange
- ▶ Pneumatic drive
- ▶ Self-locking by spring tension (turbo)
- ▶ Wear-free and maintenance-free contactless transmission system for energy and signals (optional)
- ▶ Integrated interlock status query



- 1** QUICK CHANGE MODULE ROBOT SIDE
- 2** CONNECTION MODULES / INDUCTIVE COUPLING BASE UNIT
- 3** CONNECTION MODULES / INDUCTIVE COUPLING REMOTE UNIT
- 4** MOUNTING KIT
- 5** QUICK CHANGE MODULE TOOL SIDE



SMW-Autoblok TYPE	Size					Id.n. without pallet	n. pneumatic connections		Stroke control: Inductive and analogic proximity-based	Pneumatic opening	Springs clamp + TURBO	Electric signal interface module (optional)
	55	85	110	160	240		6	7				
PRS	55					46204550						
		85				46204600						
			110			46204400						
				160		46204320						
					240	46204500						



**CLAMPING EXAMPLE**

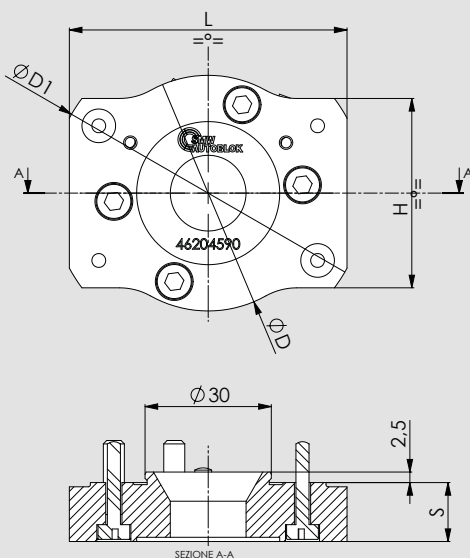
Id.n. PRS	Max liftable weight	Repeatability 0,015 mm	Pull-down force		Pressure		Weight
			spring	spring + TURBO	open	TURBO	
46204550	20 kg	0,015	70 daN	340 daN	6 bar	6 bar	0,5 kg
46204600	50 kg	0,015	200 daN	1000 daN	6 bar	6 bar	1,3 kg
46204400	75 kg	0,015	250 daN	1400 daN	6 bar	6 bar	3 Kg
46204320	150 kg	0,015	400 daN	1900 daN	6 bar	6 bar	6 Kg
46204500	500 kg	0,015	1250 daN	7600 daN	6 bar	6 bar	16 Kg

Drawings and data are subject to change by SMW-Autoblok.



# FLANGE GROUP

## for head changing 55 PRS



FLANGE KIT Id.No.	D	D1	S	H	L	WEIGHT kg	MONTABLE GRIPPERS TYPE
46204588 FLANGE KIT 55PRS/PL - 2PXS 64	62	62	14	/	58	0,11	PL 64 - 2PXS 64 *
46204590 FLANGE KIT 55PRS/PL - 2PXS 80	56	75	14	45	66	0,12	PL 80 - 2PXS 80 *
46204592 FLANGE KIT 55PRS/PL - 2PXS 100	56	93	14	55	82	0,17	PL 100 - 2PXS 100 *
46204594 FLANGE KIT 55PRS/3MN - 3PXS 64	68	68	14	/	/	0,14	3MN 64 - 3PXS 64 **
46204596 FLANGE KIT 55PRS/3MN - 3PXS 80	84	84	14	/	/	0,21	3MN 80 - 3PXS 80 **
46204598 FLANGE KIT 55PRS/3MN - 3PXS 100	104	104	14	/	/	0,33	3MN 100 - 3PXS 100 **

