

ROTARY PLATE

Pallet/Tooling fast set-up on turning spindles



▶ **CHUCK**

▶ **PALLET**

▶ **ROTARY PLATE**

▶ **ADAPTOR**



ROTARY PLATE

Rotating table which holds the workpiece in place during operations

CUSTOMER BENEFITS

- PALLET/TOOLING FAST SET-UP
- CHUCKS FAST SET-UP ON TURNING SPINDLES, MANUAL CONNECTION (WITH SCREW) BETWEEN CHUCK AND CYLINDER FOR MANUAL ROTARY PLATE
- TOOLING PRESENCE WITH AIR SENSING FUNCTION FOR AUTOMATIC ROTARY PLATE
- SC STROKE CONTROL FUNCTION
- POSITIONING ACCURACY < 0,005 mm
- 3 PNEUMATIC FEEDINGS (6 BAR) AVAILABLE ON PALLET FOR AUTOMATIC ROTARY PLATE+3FEEDINGS

TECHNICAL FEATURES

- CASE HARDENED MAIN COMPONENTS TO ASSURE BETTER ACCURACY AND LONG OPERATING LIFE
- PNEUMATIC OPENING
- CLOSING BY SPRING + TURBO FUNCTION
- OPENING/CLOSING APS MANUALLY OPERATED
- OPENING/CLOSING APS AUTOMATICALLY OPERATED
- G6.3 BALANCING DEGREE

Types	Size								Manual operation of APS modules	Automatic operation of APS modules	Automatic operation of APS modules + 3 feedings	APS central size		APS lateral size		Ø pallets and chucks usable on rotary plate
	202	260	330	420	520	650	1000	1400				190	250	140	160	
MANUAL ROTARY PLATE	202											1				170-210
		260											1			210-250-315
			330											3		250-315
				420										4		400
					520							1			4	500-650
						650						1			4	650-800
							1000						1		6	1000-1250
AUTOMATIC ROTARY PLATE								1400				1		8		1400-1600-1800
	202											1				170-210
		260											1			210-250-315
			330											3		250-315
				420										4		400
					520							1			4	500
						650						1			4	650-800
AUTOMATIC ROTARY PLATE + 3 FEEDINGS	202											1				170-210
		260											1			210-250-315
			330											3		250-315
				420										4		400
					520							1			4	500
						650						1			4	650-800

Drawings and data are subject to change by SMW-Autoblok.

AUTOMATIC OPERATION

APS MODULES

3
b



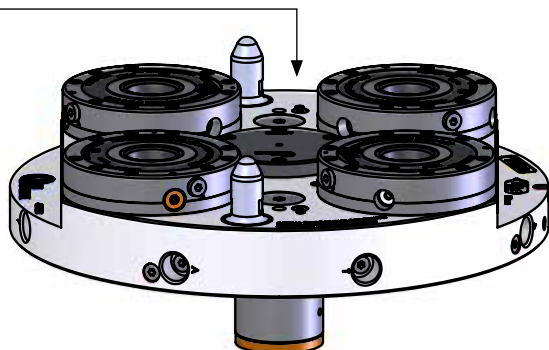
Drawings and data are subject to change by SMW-AUTOBLOK.

ROTARY PLATE ASSEMBLY LINE

Automatic operation APS modules

Manual or automatic pallet tooling fast set-up

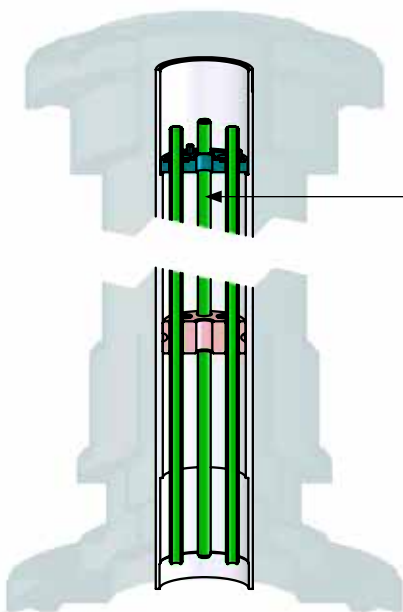
Pallet  FOR EACH SIZE, CHECK RELATED PALLETS



Mod. Id.No. AUTOMATIC ROTARY PLATE

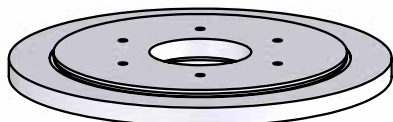
Ø202	46220460
Ø260	46220500
Ø330	46220360
Ø420	46220400
Ø520	46220090
Ø650	46220140

ISO-A flange  [VIEW ACCESSORIES](#)



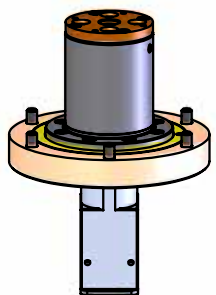
Pipe bundle

(to customize for each machine tool specifically)



Manifold flange

(to customize for each machine tool specifically)

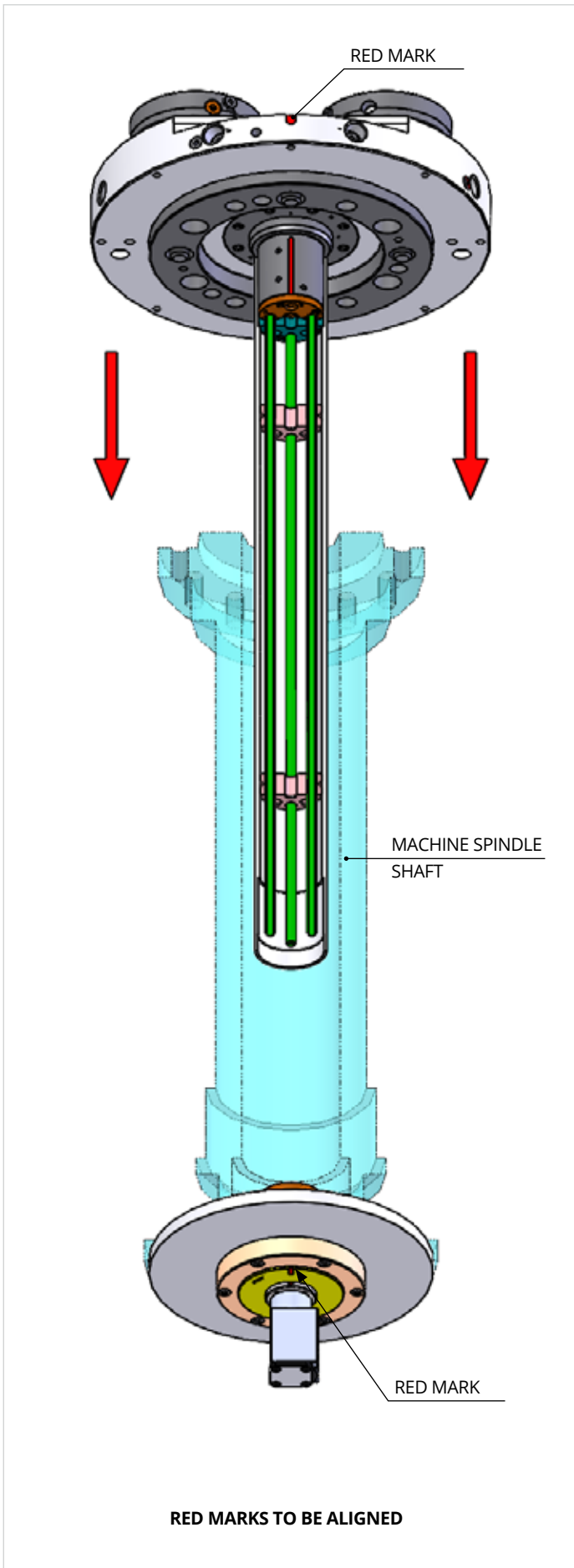


60580011  [VIEW ACCESSORIES](#)

3-pneumatic feedings manifold

PIPE BUNDLE for Automatic operation of APS modules

PIPE BUNDLE assembly from ROTARY PLATE side



PIPE BUNDLE assembly from MANIFOLD side

