

HB-D

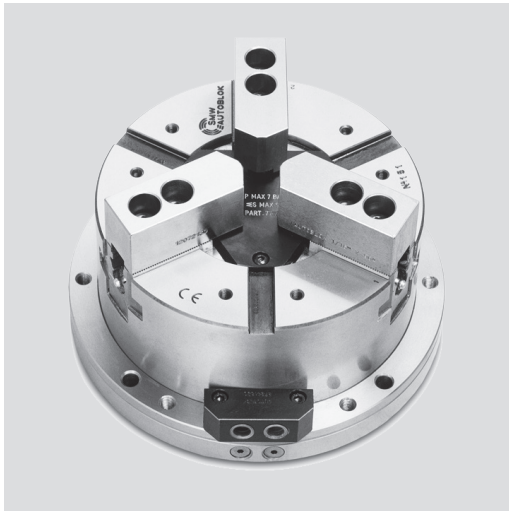
INCH SERRATION
2 or 3 jaws

HB-C

TONGUE & GROOVE
3 jaws

Stationary chuck, hydraulic Ø 130 - 315 mm

- Built-in hydraulic cylinder
- 2 and 3 jaws



Application/customer benefits

- Stationary hydraulic chuck for self centering clamping of parts on milling machines, machining centers and special machines

HB-D: INCH SERRATED master jaws (1/16" x 90°)

HB-C: TONGUE & GROOVE master jaws (American standard)

HB-M: METRIC SERRATED master jaws (1.5 mm x 60°) **on request from Ø 165**

Technical features

- Stationary chuck consisting of a 2- or 3-jaw self centering chuck with built-in hydraulic cylinder
- Compact design
- Case hardened body to assure consistent high precision and long chuck life

Standard equipment

Stationary chuck
1 set T-nuts with bolts
(HB-C excluded)
1 set of soft blank top jaws
(HB-C excluded)

Ordering example

Stationary chuck HB-C 250 (3 jaws)
or
Stationary chuck HBL-D2 165 (2 jaws)

Technical data

SMW-AUTOBLOK Type		HB-D 130	HB-D 165 HB-C 165	HB-D 210 HB-C 210	HB-D 250 HB-C 250	HB-D 315 HB-C 315
Radial jaw stroke	mm	3	3.2	4	4.6	5.5
Radial jaw stroke HBL-D2 (2 jaws)*	mm	5.6	6	7.5	8.8	10.5
Piston area	cm ²	63	79	114	167	203
Max. operating pressure	bar	30	30	30	30	30
Gripping force at 25 bar	kN	50	55	85	125	150
Gripping force at 25 bar HBL-D2 (2 jaws)*	kN	28	35	52	75	90
Weight (without top jaws)	kg	9.5	18	30	44	69
Id. No. HB-D 3 jaws		77271113	77271116	77271121	77271125	77271131
Id. No. HB-C 3 jaws		-	77277516	77277521	77277525	77277531
Id. No. HBL-D 2 jaws		-	77271716	77271721	77271725	77271731

* The HBL-D 2 jaw fixture is available with serrated master jaws (inch or metric) and long stroke only.



JAWS-CATALOG

Request or
download:
www.smw-autoblok.de

Stationary chuck, hydraulic Ø 130 - 315 mm

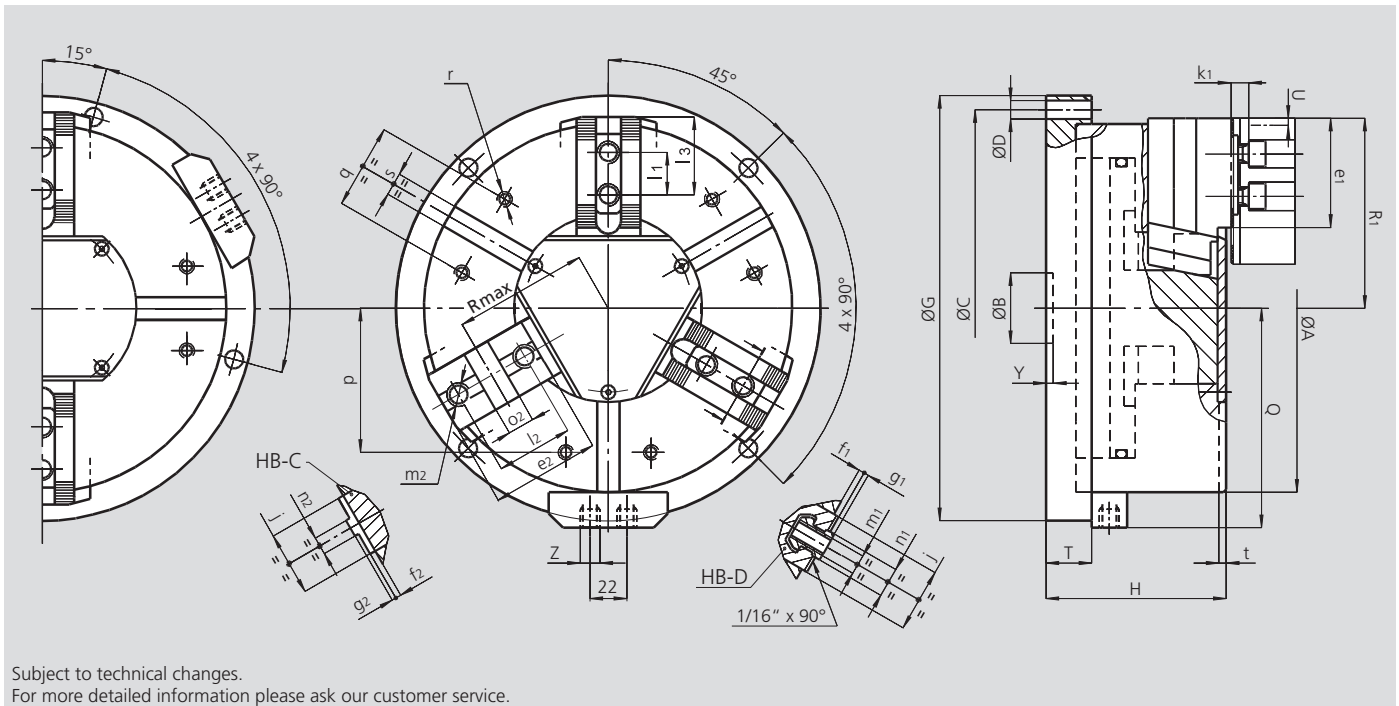
- Built-in hydraulic cylinder
- 2 and 3 jaws

HB-D

INCH SERRATION
2 or 3 jaws

HB-C

TONGUE & GROOVE
3 jaws



Subject to technical changes.
For more detailed information please ask our customer service.

Common dimensions

SMW-AUTOBLOK Type		HB-D 130	HB-D 165 HB-C 165	HB-D 210 HB-C 210	HB-D 250 HB-C 250	HB-D 315 HB-C 315
	A	mm	135	170	215	315
	B	mm	30	30	35	50
Fixing holes circle	C	mm	155	190	235	340
Fixing holes diameter	D	mm	9	11	11	13
	G	mm	175	210	255	360
	H	mm	89	100	117	141
	Q	mm	92.5	110	133	183
	T	mm	25	27	30	32
Radial jaw stroke (3 jaws)	U	mm	3	3.2	4	4.6
Radial jaw stroke HBL-D2 (2 jaws)	U	mm	5.6	6	7.5	10.5
	Y	mm	5	5	5	5
Hydraulic connections	Z	inch	R1/4"	R1/4"	R1/4"	R1/4"
	j	mm	26	30	36	45
	k1	mm	10	10	11	12
	p	mm	52	65	80	102
	q	mm	30	36	45	60
	r	mm	M6	M8	M8	M10
	s H12	mm	12	16	16	16
	t	mm	3.5	5	5	5

HB-D and HBL-D2 fixtures specific dimensions

SMW-AUTOBLOK Type		HB-D 130	HB-D 165	HB-D 210	HB-D 250	HB-D 315
	e1	mm	45	48	60	99
	f1	mm	3	4	3	4
	g1	mm	2.5	2.5	2.5	3.5
	l1	mm	16	16.5	23	30
T-nut position min. / max.	l3	mm	23 / 30	24 / 40	33 / 50	43 / 84
	m1	mm	M8	M10	M12	M16
	n1 h8	mm	12	14	17	21
Chuck open HB-D (3 jaws)	R1	mm	71	89	110	162
Chuck open HBL-D2 (2 jaws)	R1	mm	74	92	114	168

HB-C fixtures specific dimensions (available only as 3-jaw chuck version)

SMW-AUTOBLOK Type		HB-C 165	HB-C 210	HB-C 250	HB-C 315
	e2	mm	54	71	99
	f2	mm	4	4	4
	g2	mm	3	3	3
	l2	mm	38	44.4	54
	m2	mm	M10	M12	M16
	n2 h8	mm	7.94	7.94	12.70
	o2H7	mm	12.68	12.68	19.03
Chuck open	R1	mm	89	110	134
Chuck open	Rmax	mm	62	77	94