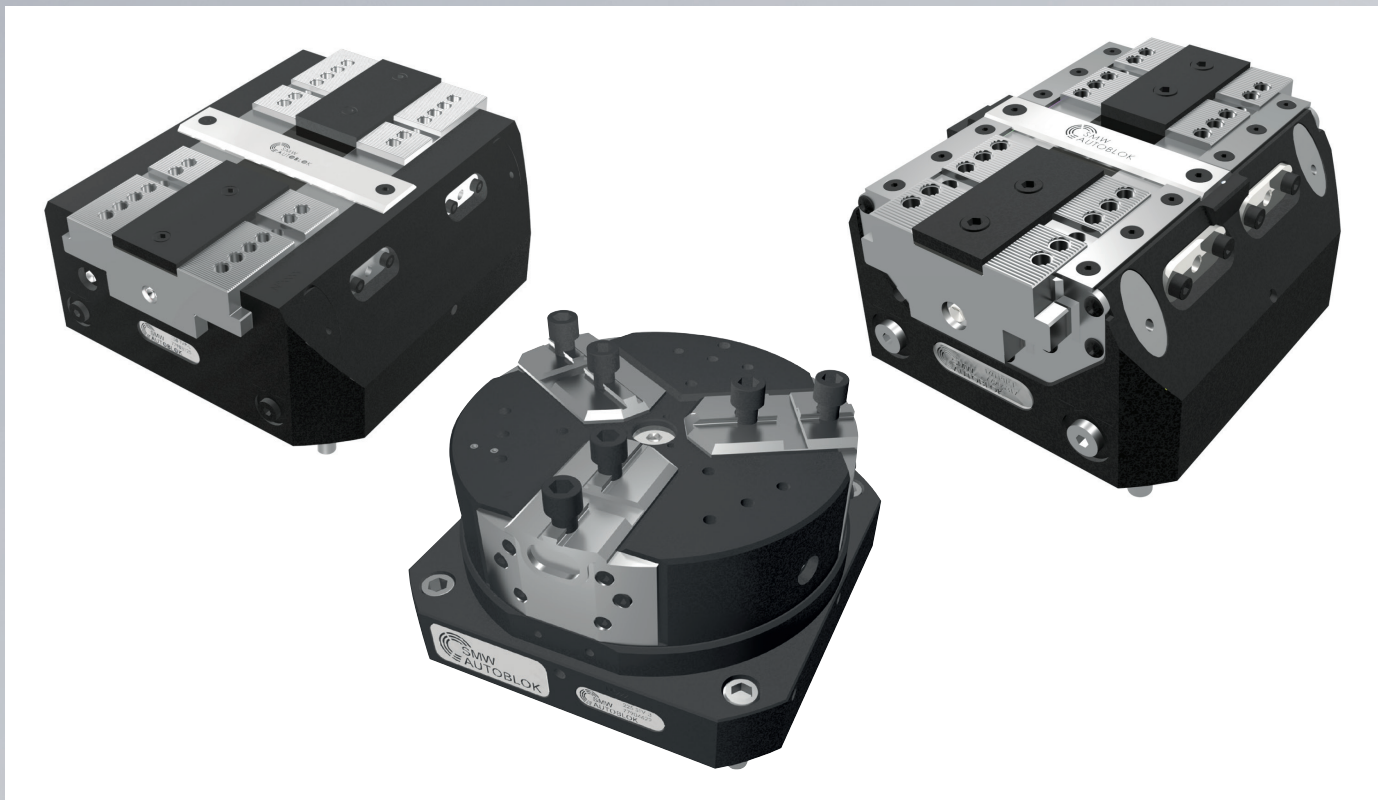


# TWIN VISES

Range of products



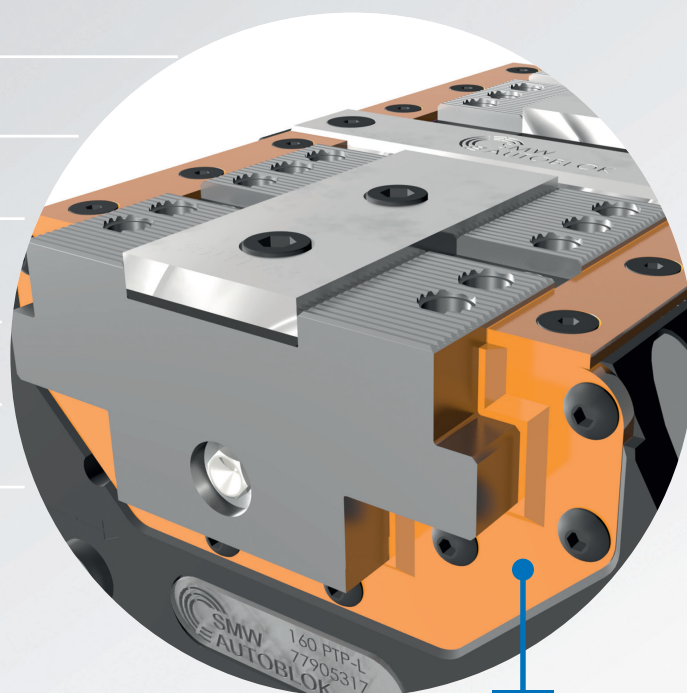
Industry 4.0  
Product



## 1 PT - PROTECTED TWIN VISES

SIZES AVAILABLE 100-125-160-200-250

- ▶ Pneumatic and Hydraulic Version
- ▶ Pneumatic Valve (optional)
- ▶ Air Sensing
- ▶ Master jaws guide protected against swarf and chips **1.1**
- ▶ Normal Stroke
- ▶ Long Stroke
- ▶ Fixed Jaw

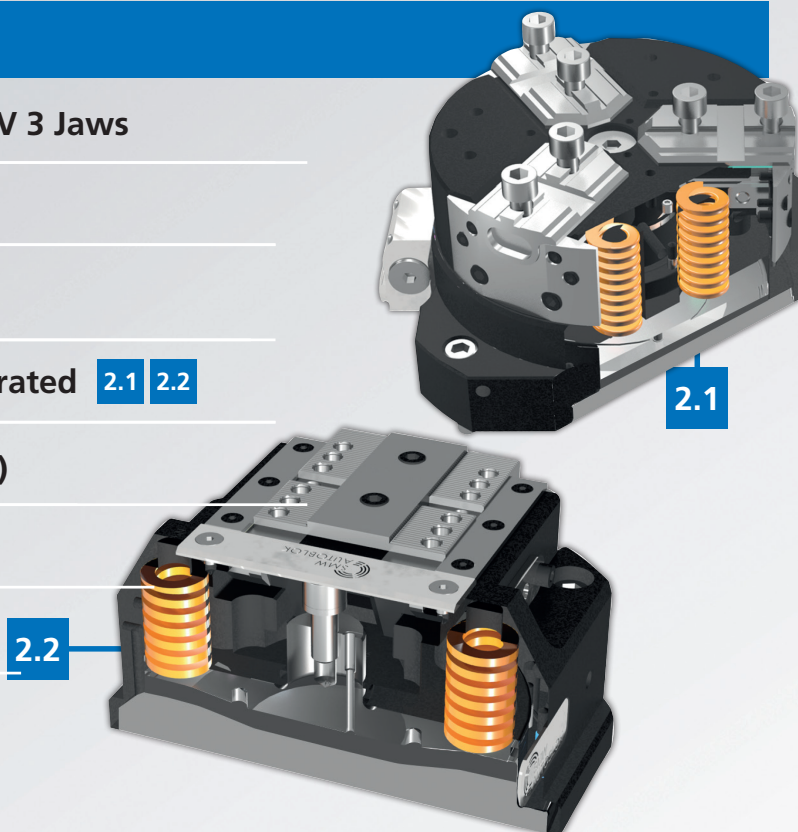


1.1

## 2 STV - SPRING AND AIR OPERATED TWIN VISES

SIZES AVAILABLE 180-225

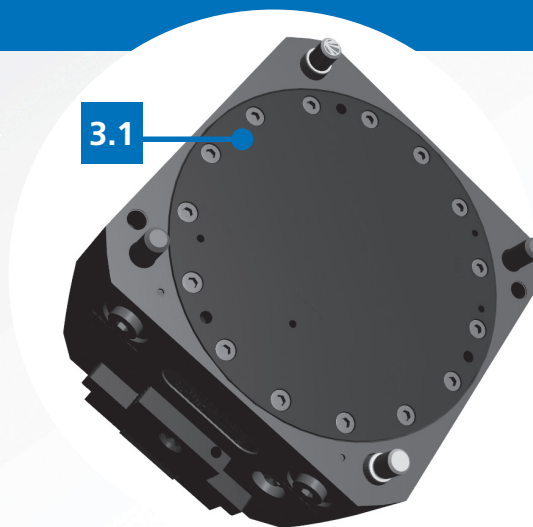
- ▶ STV 2 Jaws (also 125) and STV 3 Jaws
- ▶ Air Sensing
- ▶ Master jaws guide protected against swarf and chips
- ▶ Spring Clamped and Air Operated **2.1** **2.2**
- ▶ Safety Valve SAB-1 (optional)
- ▶ Pneumatic Valve (optional)
- ▶ Normal stroke **2.2**
- ▶ Long stroke



## 3 TV - STANDARD TWIN VISES

SIZES AVAILABLE 100-160-200-250-315

- ▶ Pneumatic and Hydraulic Version
- ▶ Air Sensing **3.1**
- ▶ Stroke control Proximity (optional)
- ▶ Normal Stroke
- ▶ Long Stroke
- ▶ Fixed Jaw



## 4 RR - QUICK JAWS CHANGE

PROTECTED TWIN VISE with QUICK CHANGE

- ▶ Pneumatic and Hydraulic Version
- ▶ Long stroke
- ▶ OD and ID Clamping



# STV-3N / STV-3L

- Protected and springs clamping
- Pneumatic open / close control (stroke control) master jaws valve

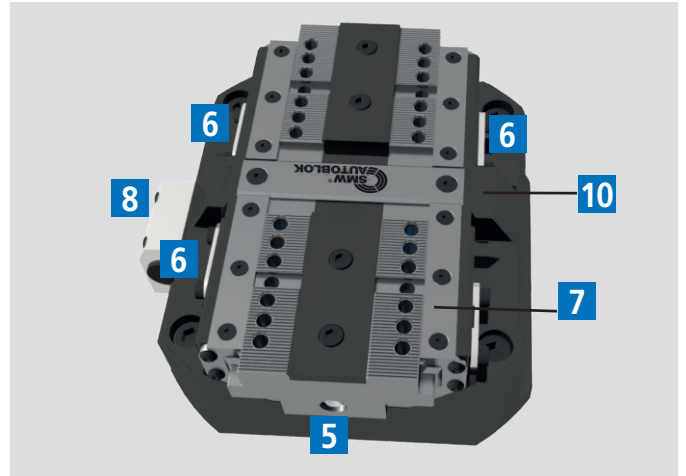
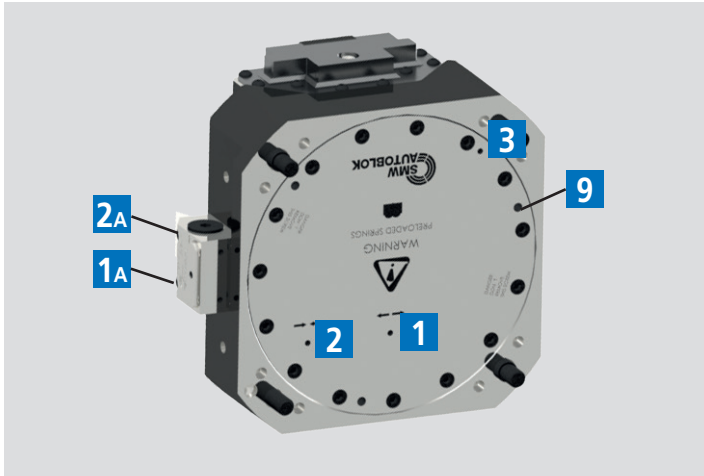
- 3 Jaws
- STV-3N: Normal stroke
- STV-3L: Long stroke

SPRING AND AIR OPERATED TWIN VISE

Type	Id. No.	Stroke type	Max. clamping force middle stroke [kN]		Stroke / jaw [mm]	Piston area [cm <sup>2</sup> ]	Re-opening pressure [bar]	Max. operating pressure [bar]	Min. / max. operating pressure [bar]	Weight [kg]
			Only springs	Springs + Turbo						
180 STV-3N	77904618	NORMAL	13	38	3.8	170	5	6	-	18
225 STV-3N	77904622	NORMAL	24	64	4.2	250	6	6	-	29.5
225 STV-3L	77904722	LONG	16	42	8	250	6	6	-	29.5
180 STV-3N + SAB-1	77905018*	NORMAL	-	-	-	-	-	-	3.5 / 6	-
225 STV-3N + SAB-1	77905022*	NORMAL	-	-	-	-	-	-	3.5 / 6	-
225 STV-3L + SAB-1	77905122*	LONG	-	-	-	-	-	-	3.5 / 6	-

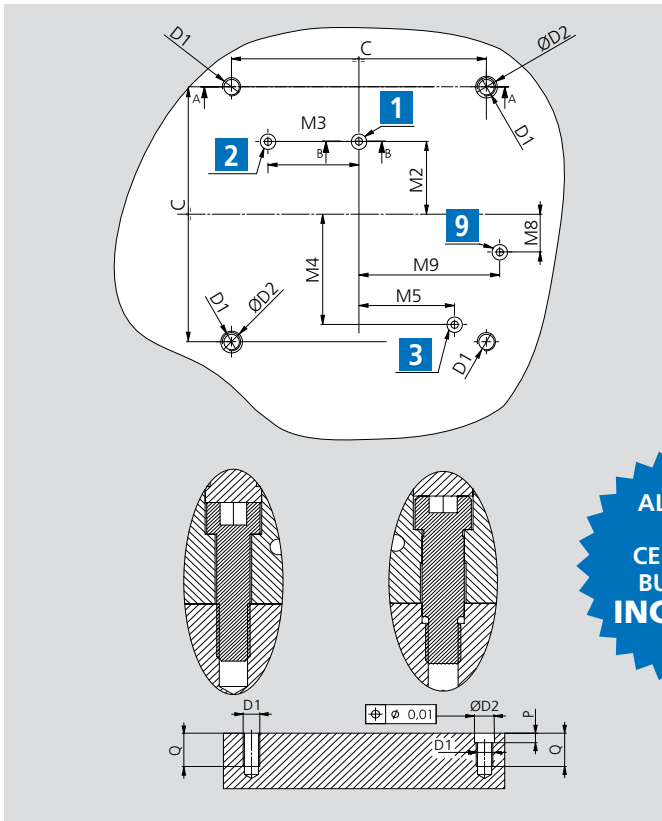
\* Id. No. Twin Vise included the SAB-1. For example, 77905018 is composed by 180STV-3N Id. No. 77904618 plus SAB-1 Id. No. 27581810

STV-3			180	225
	<b>A</b>	mm	184	225
	<b>A1</b>	mm	178	222
	<b>A2</b>	mm	172	216
	<b>B (Ø)</b>	mm	225	284
SAB-1 valve overall dimension	<b>B1 (Ø)</b>	mm	233	276
	<b>C</b>	mm	140	180
	<b>D1(Ø)</b>	mm	M10	M12
	<b>D2 (Øf7)</b>	mm	12	14
	<b>D4 (Øjs7)</b>	mm	13	16
	<b>E (ø)</b>	mm	190	240
	<b>H</b>	mm	108	115
	<b>H1</b>	mm	105	112
	<b>H2</b>	mm	33	38
	<b>J</b>	mm	34	46
	<b>M2</b>	mm	40	50
	<b>M3</b>	mm	50	65
	<b>M4</b>	mm	60.5	79
	<b>M5</b>	mm	52.5	63
	<b>M8</b>	mm	65	80
	<b>P</b>	mm	4	5
	<b>P1</b>	mm	6	6
	<b>Q</b>	mm	18	20
Min. / max. (normal stroke)	<b>R max</b>	mm	52.2 / 56	67.8 / 72
Min. / max. (normal stroke)	<b>R1</b>	mm	82.7 / 86.5	103.8 / 108
Min. / max. (normal stroke)	<b>R2</b>	mm	8.7 / 12.5	12.8 / 17
Min. / max. (long stroke)	<b>R max</b>	mm	/	68 / 76
Min. / max. (long stroke)	<b>R1</b>	mm	/	104.5 / 112.5
Min. / max. (long stroke)	<b>R2</b>	mm	/	9 / 17
	<b>S</b>	mm	18	20
Normal stroke	<b>U</b>	mm	3,8	4.2
Long stroke	<b>U</b>	mm	/	8
	<b>e</b>	mm	70	87
	<b>f</b>	mm	3.5	3.5
	<b>g</b>	mm	3	3
	<b>h</b>	mm	25	35
	<b>l</b>	mm	38	44.4
	<b>m</b>	mm	M10x12	M12x14
	<b>n (h8)</b>	mm	7.94	7.94
	<b>o (H7)</b>	mm	12.68	12.68
Pneumatic open / close stroke control or air purge	<b>p3</b>	mm	M4	M4
Vise closed	<b>p4</b>	mm	M4	M4
Vise open	<b>p5</b>	mm	M4	M4
	<b>p8</b>	mm	M8x16	M10x18
	<b>q</b>	mm	36	45
	<b>r</b>	mm	M8x10	M8x10
Min. / max. (normal stroke)	<b>t</b>	mm	9 / 15.6	13.5 / 20.9
Min. / max. (long stroke)	<b>t</b>	mm	/	6.8 / 20.9



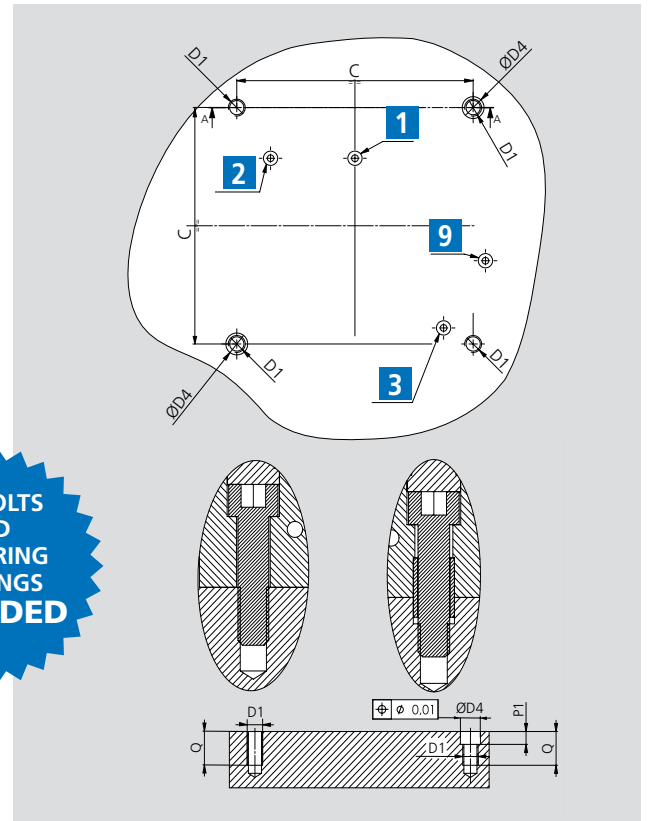
### SOLUTION 1 STANDARD

± 0,03 mm to clamping center



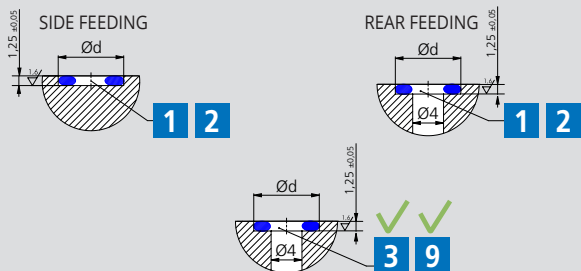
### SOLUTION 2 STANDARD

± 0,025 mm to clamping center



**ALL BOLTS AND CENTERING BUSHINGS INCLUDED**

### FEEDING SEATS: OBLIGATED EXECUTION



- 1** Open-Rear feeding
- 2** Closed-Rear feeding
- 3** Pneum.open close stroke control or Air purge\*
- 1A** Open-Side feeding
- 2A** Closed-Side feeding
- 5** Lubrication fitting
- 6** Proximity switches seats
- 7** Pneumatic open / close stroke control valve (optional)
- 8** Safety valve SAB-1 (optional)
- 9** Air sensing connection\*\* (only bottom)
- 10** Air sensing outlet\*\* (under front plate)

\* The air purge can be used only without the valve.  
 \*\* Points 9 and 10 only available on STV-2.

STV	C	D1	D2H7	D4H7	M2	M3	M4	M5	M8	M9	P	P1	Q	Ød	OR
125	100	M8	10	11	32	29.5	40.5	38.5	10.6	54.5	6	6	18	8	OR2018
180	140	M10	12	13	40	50	60.5	52.5	20.7	77.3	6	7	21	8.8	OR2021
225	180	M12	14	16	50	65	79	63	15	99.9	7	7	24	8.8	OR2021