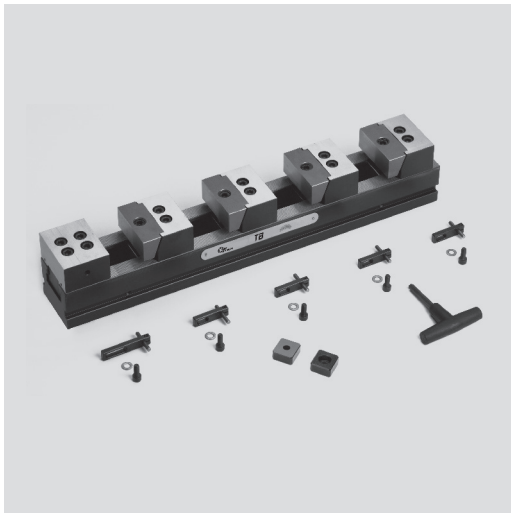


- Serration 2.0 x 60°
- Excellent price / performance ratio



Application/customer benefits

- Full usability of the machine table
- Modular system: Extensive range of accessories
- Maximum efficiency due to quick change over
- Can be used for single or multiclamp
- Set with 4 clamping positions

Technical features

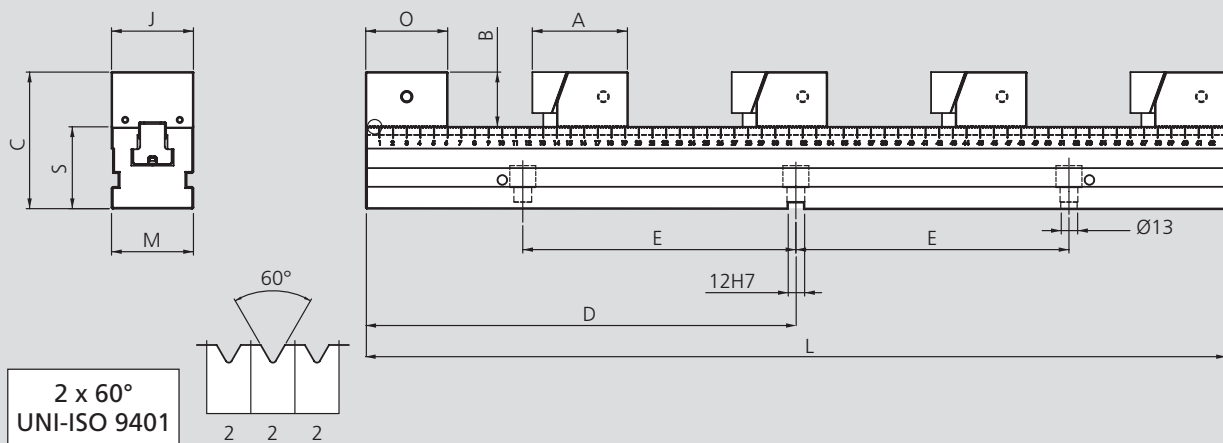
- Serration 2.0 x 60°

Standard equipment

Multiple clamping system set:

- 1 Base (different sizes)
- 1 Fix jaw
- 4 Movable jaws
- 4 Workstops
- 1 Clamping wrench

Technical data

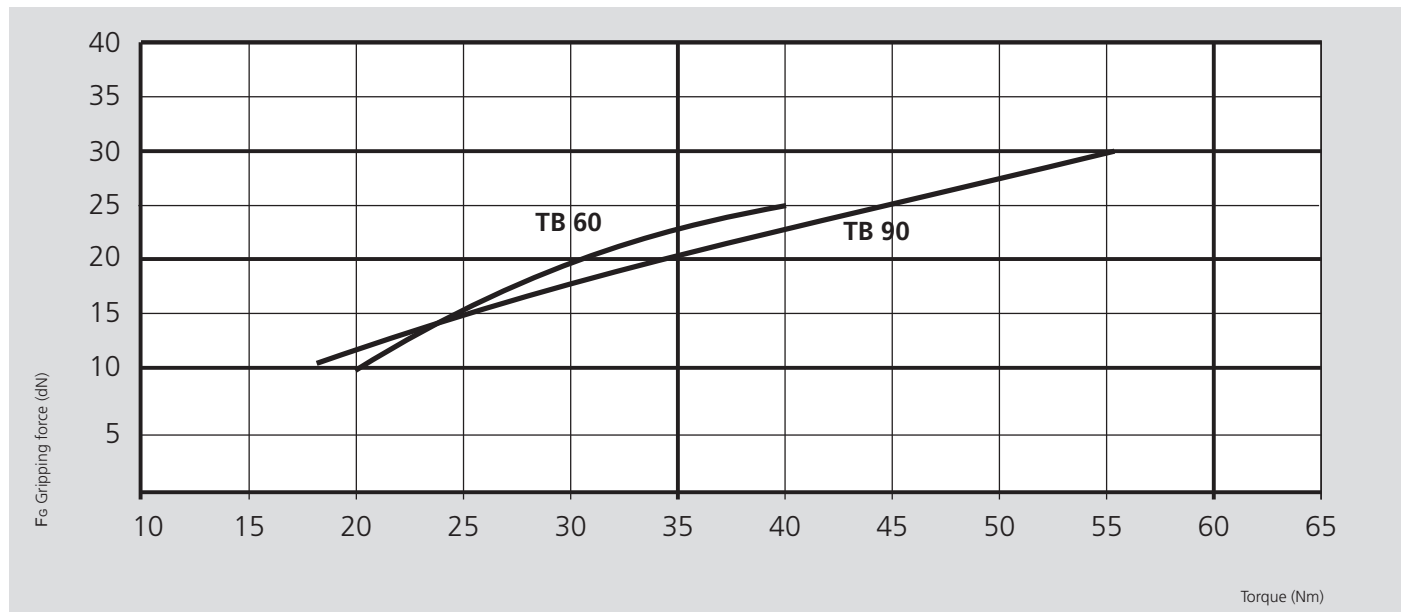


Subject to technical changes.

| Type | Id. No. | A [mm] | B [mm] | C [mm] | D [mm] | E [mm] | J [mm] | L [mm] | M [mm] | O [mm] | S ±0.01 [mm] | Weight [kg] |
|-----------|----------|--------|--------|--------|--------|--------|--------|--------|--------|--------|--------------|-------------|
| TB 60-400 | 77588101 | 70 | 40 | 100 | 200 | 100 | 60 | 400 | 60 | 60 | 60 | 16.9 |
| TB 60-500 | 77588102 | | | | 250 | 150 | | 500 | | | | 18.9 |
| TB 60-630 | 77588103 | | | | 315 | 200 | | 630 | | | | 22.0 |
| TB 90-400 | 77588201 | 80 | 45 | 115 | 200 | 100 | 90 | 400 | 90 | 70 | 70 | 27.6 |
| TB 90-500 | 77588202 | | | | 250 | 150 | | 500 | | | | 32.8 |
| TB 90-630 | 77588203 | | | | 315 | 200 | | 630 | | | | 36.7 |

- Serration 2.0 x 60°
- Excellent price / performance ratio

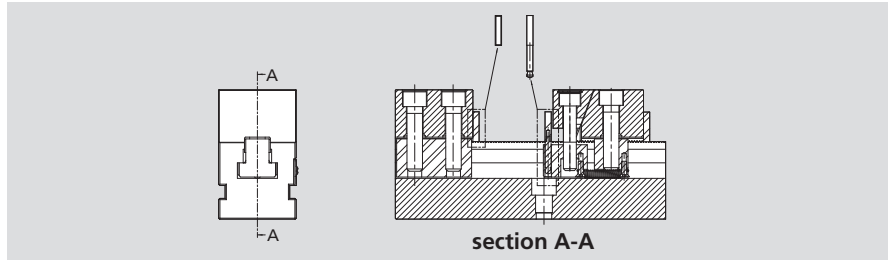
Clamping force diagrams



Clamping capacity

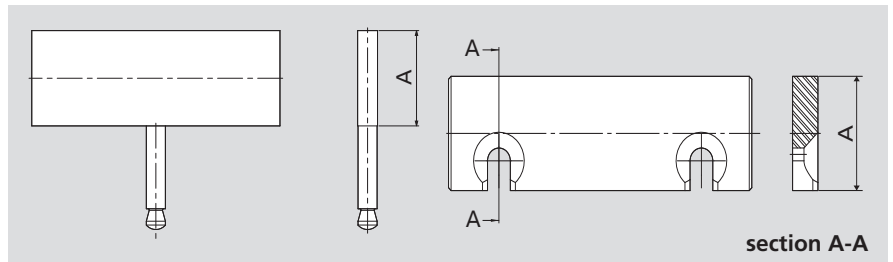
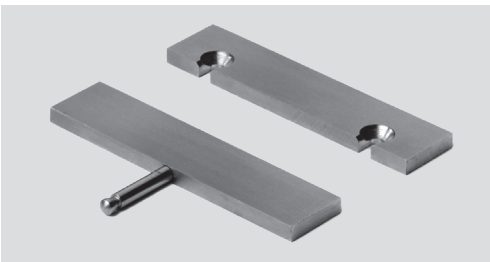
| Type | A max. [mm] | | | |
|-----------|-------------|-----------|-----------|-----------|
| | Diagram 1 | Diagram 2 | Diagram 3 | Diagram 4 |
| TB 60-400 | 270 | 100 | 43 | 15 |
| TB 60-500 | 370 | 150 | 76 | 40 |
| TB 60-630 | 500 | 215 | 120 | 73 |
| TB 90-400 | 249 | 84 | 29 | - |
| TB 90-500 | 349 | 134 | 62 | 26 |
| TB 90-630 | 479 | 199 | 106 | 59 |

4 pairs of TB parallels, set



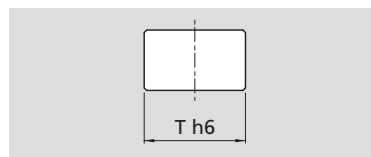
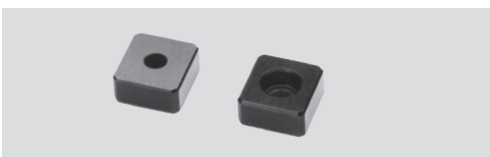
| Type | Id. No. | Weight [kg] |
|-------|----------|-------------|
| TB 60 | 58819204 | 0.4 |
| TB 90 | 58829204 | 0.7 |

Pair of TB parallels



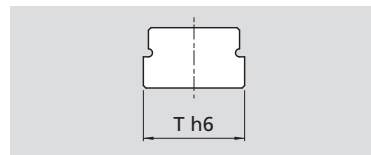
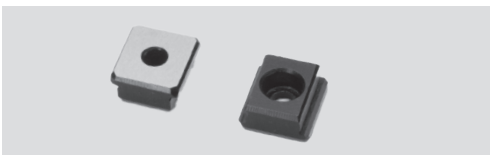
| Type | Id. No. | A [mm] |
|-------|----------|--------|
| TB 60 | 58813518 | 18 |
| TB 60 | 58813523 | 23 |
| TB 60 | 58813528 | 28 |
| TB 60 | 58813537 | 37 |
| TB 90 | 58823518 | 18 |
| TB 90 | 58823523 | 23 |
| TB 90 | 58823533 | 33 |
| TB 90 | 58823542 | 42 |

Pair of T-nuts



| Type | Id. No. | T h6 [mm] |
|------------|----------|-----------|
| TB 60 / 90 | 58011592 | 12 |

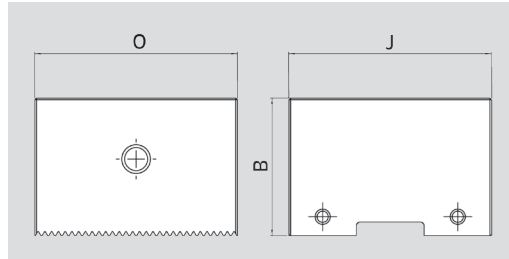
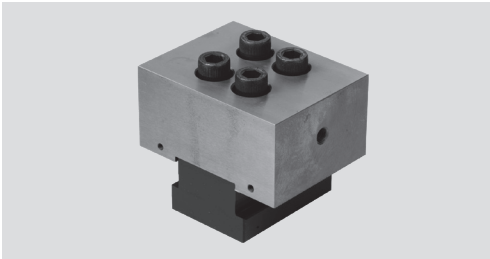
Pair of T-nuts with special dimensions



| Type | Id. No. | | | | | | |
|------------|---------|------------|------------|------------|------------|------------|------------|
| | Th6 | 12 mm - h6 | 14 mm - h6 | 16 mm - h6 | 18 mm - h6 | 20 mm - h6 | 22 mm - h6 |
| TB 60 / 90 | - | 58011593 | 58011594 | 58011595 | 58011596 | 58011597 | |

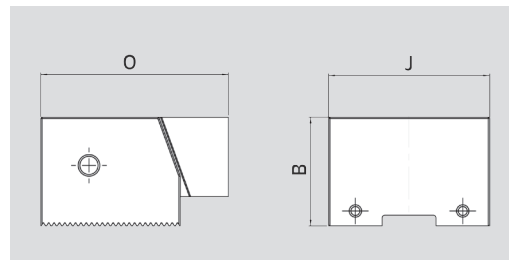
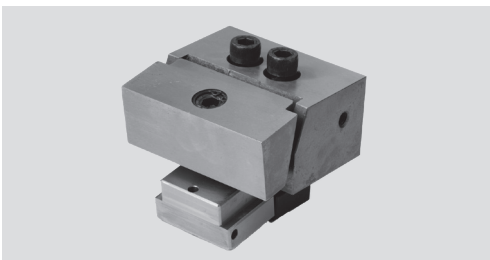
Accessories

Fix jaws, set



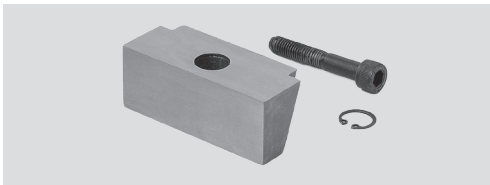
| Type | Id. No. | B [mm] | J [mm] | O [mm] | Weight [kg] |
|-------|----------|--------|--------|--------|-------------|
| TB 60 | 58817220 | 40 | 60 | 70 | 1.3 |
| TB 90 | 58827220 | 45 | 90 | 80 | 2.8 |

Adjustable jaws with pull down, smooth, set



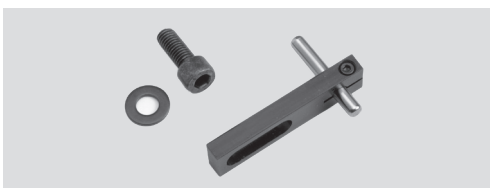
| Type | Id. No. | B [mm] | J [mm] | O [mm] | Weight [kg] |
|-------|----------|--------|--------|--------|-------------|
| TB 60 | 77588123 | 40 | 60 | 70 | 1.4 |
| TB 90 | 77588223 | 45 | 90 | 80 | 3 |

Clamping insert, smooth



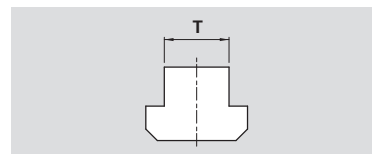
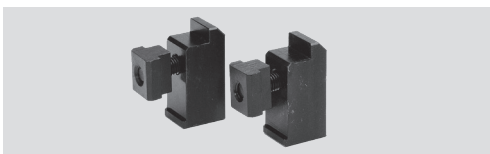
| Type | Id. No. |
|-------|----------|
| TB 60 | 58810409 |
| TB 90 | 58820409 |

Workstop



| Type | Id. No. |
|------------|------------------|
| TB 60 | 58315010 fixed |
| TB 90 | 58325010 fixed |
| TB 60 / 90 | 58315020 movable |

Pair of clamps, incl. T-nut and clamping screw



| Type | Id. No. | | | | | |
|-------|----------|----------|----------|----------|----------|----------|
| | 12 mm | 14 mm | 16 mm | 18 mm | 20 mm | 22 mm |
| TB 60 | 58012792 | 58012793 | 58012794 | 58012795 | 58012796 | 58012797 |
| TB 90 | 58022792 | 58022793 | 58022794 | 58022795 | 58022796 | 58022797 |