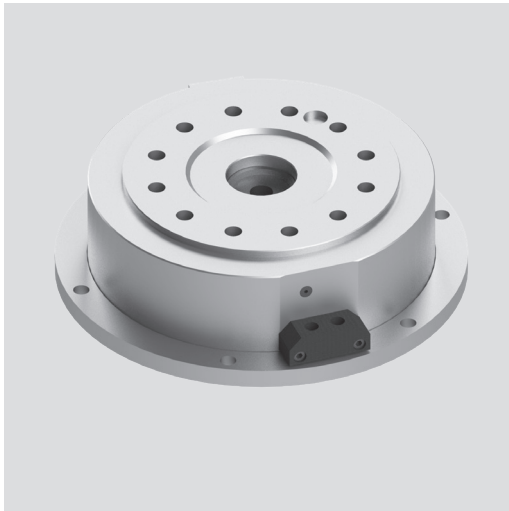


- Can be equipped with different types of chucks
- With stroke control



### Application/customer benefits

- Gripping of components on vertical or horizontal machining centers

### Technical features

- Standard pneumatic cylinder can be equipped with various type of chucks:
  - 2 / 3 / 4 jaws versions depending on chuck model and diameter
  - Sealed or unsealed chucks
  - With serrated or Tongue & Groove master jaw available
  - Normal or long stroke depending on chuck model and diameter
- Permanent air pressure required
- Optional SAB safety valve to hold pressure during pallet transfer

**Remark:** The clamping unit is made of static cylinder + connection kit + chuck to be selected.

For chuck details, please see the technical data of the selected chuck.

### Standard equipment

Static cylinder  
the connection kit must be added,  
see the table on next page

### Ordering example

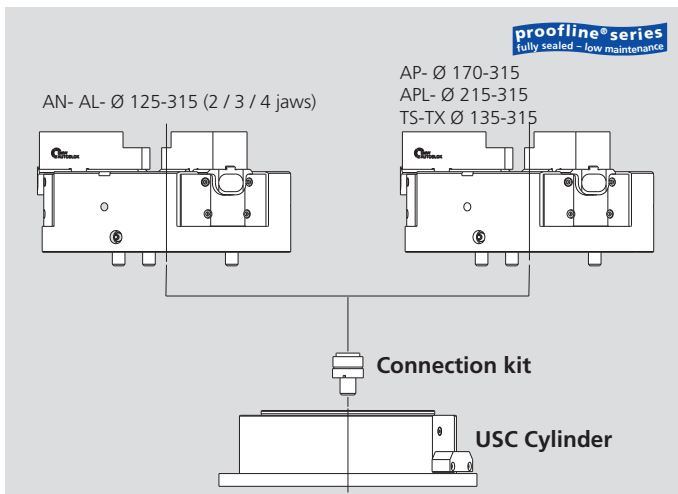
Please see the below table for part numbers and part descriptions

### Accessories

Valve SAB1 Id. No. 27581610 for USC 140/170

Valve SAB2 Id. No. 27581620 for USC 210/260

Mounting brackets

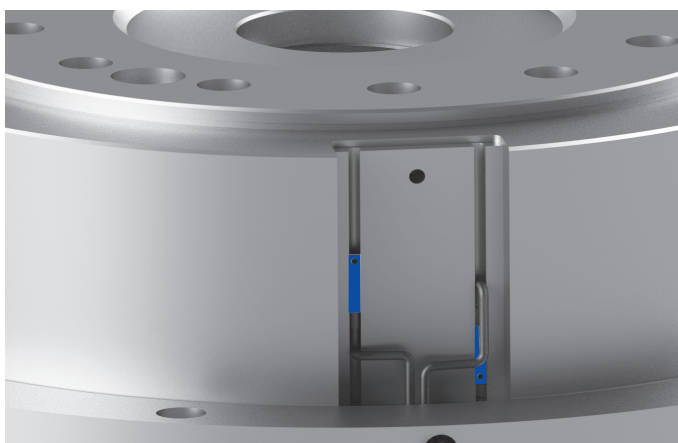


- **USC-AN** = cylinder equipped with a 2 / 3 jaw chuck type AN- (normal stroke). Chuck until to Ø 315 mm
- **USC-AL** = cylinder equipped with a 2 / 3 jaw chuck type AL- (long stroke). Chuck until to Ø 315 mm
- **USC-TS** = cylinder equipped with a 2 / 3 jaw chuck type TS- Chuck from Ø 135 to 315 mm
- **USC-TX** = cylinder equipped with a 3 jaw chuck. Chuck from Ø 170 to 315 mm
- **USC-AP** = cylinder equipped with a 3 jaw chuck type AP- (normal stroke). Chuck until to Ø 315 mm
- **USC-APL** = cylinder equipped with a 3 jaw chuck type APL- (long stroke). Chuck Ø 170 to 315 mm

### Stroke control

The stroke control system consists of two built in magnets and two external sensors (Id.-Nr. 71834910) reading the axial position of the cylinder piston and consequently of chuck jaws mounted on it.

The stroke control gives the following signals: „chuck fully open“, „chuck fully closed“ or „part clamped“ positions.

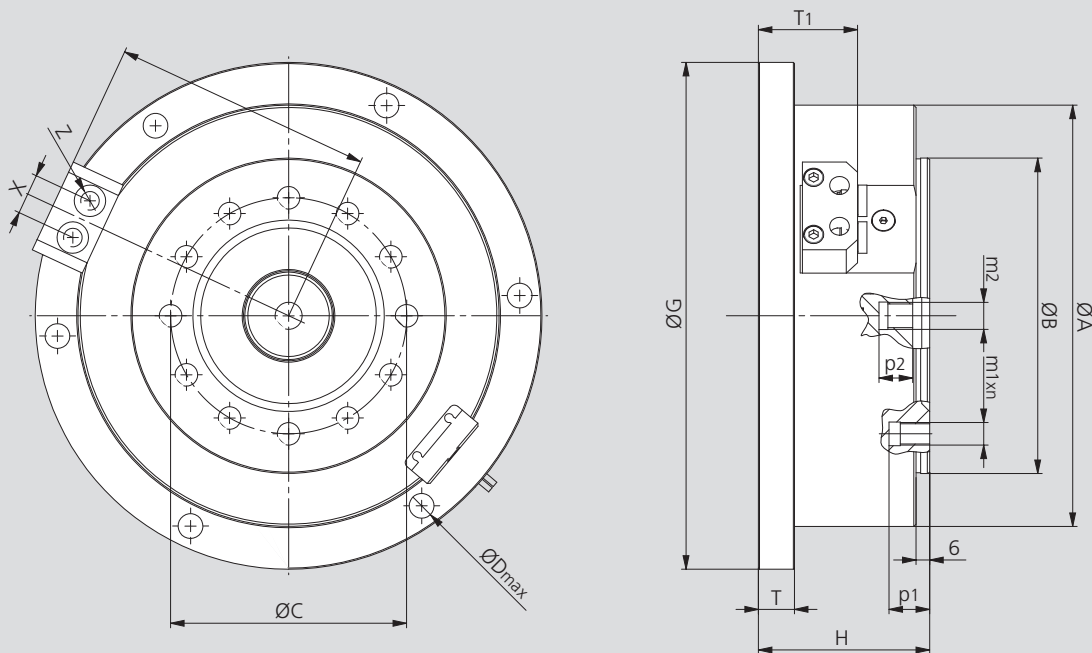


### Technical data

SMW-AUTOBLOK Type Id. No.		USC 140 97501407	USC 170 97501702	USC 210 97502106	USC 260 97502601
Piston area-chuck (open)	cm²	133	189	269	434
Piston area-chuck (closed)	cm²	126	176	249	409
Max. operating pressure	bar	7	7	7	7
Piston stroke	mm	17	22	26	31
Pushforce at 6 bar	kN	8	11	16	26
Pullforce at 6 bar	kN	7.5	10.5	15	24.5
Cylinder unit mass	kg	3.3	5	7	12.5

- Can be equipped with different types of chucks
- With stroke control

Pneumatic static cylinder



Subject to technical changes.  
For more detailed information please ask our customer service.

SMW-AUTOBLOK Type			USC 140 97501407	USC 170 97501702	USC 210 97502106	USC 260 97502601
Id. No.						
A	mm		162	187	217	275
B	mm		115	140	170	220
C	mm		82.6	104.8	133.4	171.4
D	mm		11	11	11	13
G	mm		200	225	255	327
H	mm		61.5	76	83	95
Q	mm		98	110.5	129.5	158.5
T	mm		16	16	16	16
T1	mm		38.5	40.5	43.5	43.5
X	mm		18	18	22	22
Z	inch		1/8"	1/8"	1/4"	1/4"
m1	mm		M10	M10	M12	M16
m2	mm		M10	M12	M16	M20
n	mm		12x	12x	12x	12x
p1	mm		14	18	19	23
p2	mm		18	15	21	25

## Ordering review connection kit

Size	125 AN-AL	135 TS	165 AN-AL	170 AP	170 TS/TX	210 AN-AL	210 TS-TX	215 AP-APL	250 AN-AL	250 TS-TX	260 AP-APL	315 AN-AL	315 TS-TX	315 AP-APL
USC 140	75511410	75511470	-	-	-	-	-	-	-	-	-	-	-	-
USC 170	-	-	75511760	75511760	75511770	-	-	-	-	-	-	-	-	-
USC 210	-	-	-	-	-	75512110	75512170	75512160	-	-	-	-	-	-
USC 260	-	-	-	-	-	-	-	-	75512610	75512670	75512660	75512620	75512670	75512660

- If the cylinder operates an AN / AL chuck (with 2 / 3 / 4 jaws and various jaw types), the chuck must be ordered separately.
- If the cylinder operates an AP / APL chuck (only 3 jaws available and various jaw types), the chuck must be ordered separately.
- If the cylinder operates a TS / TX chuck (only 3 jaws available and various jaw types), the chuck must be ordered separately.
- For technical information on the chucks, please see the specific catalogue page. (more information at general catalog turning).
- For the chucks Id. Numbers, please see our price lists or ask a quotation to your nearest SMW-AUTOBLOK office.

JAWS-CATALOG

Request or  
download:  
[www.smw-autoblok.de](http://www.smw-autoblok.de)

