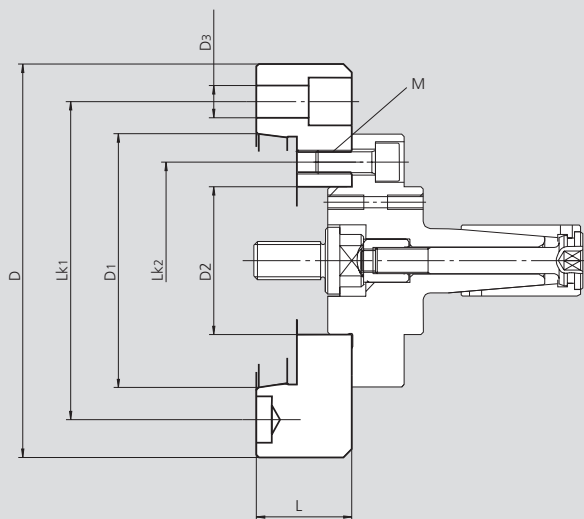


# Adapters

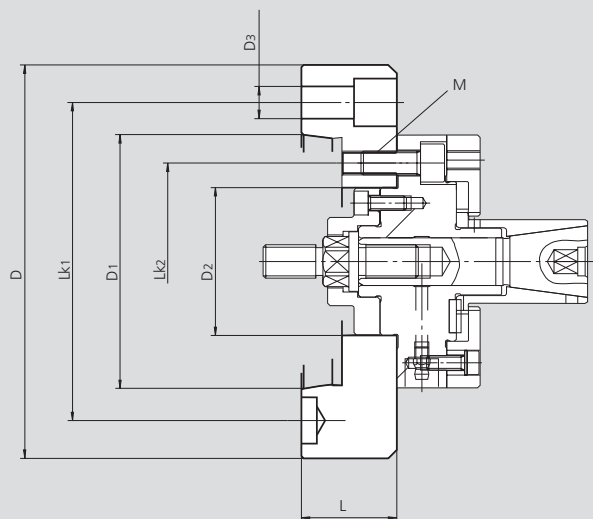
ISO-A for expanding mandrels

- Mandrels EM-A and EM-B have cylindrical mounting
- Adapters for DIN 55026 / ISO-A 702/1 spindle noses

EM-A



EM-B



Subject to technical changes.  
For more detailed information please ask our customer service.

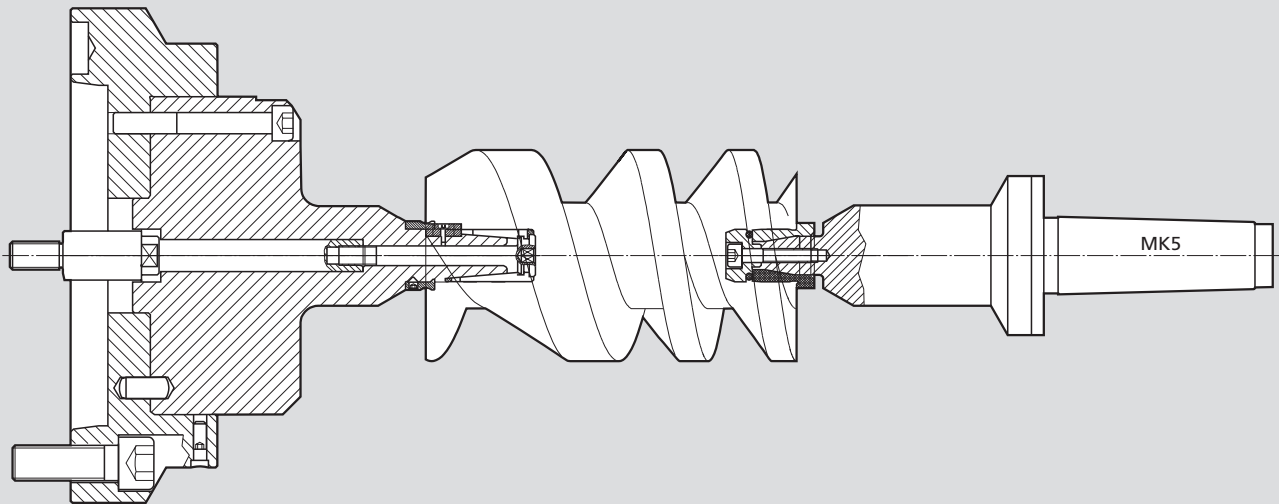
## Technical data

Adapter flange Id. No.	mm	Spindle nose ISO	D	D1	D2	D3	LK1	LK2	L	M
24150100	mm	A5	127	82.563	62 <sup>H6</sup>	12	104.8	82.6	40	3 x M10
24150400	mm	A5	135	82.563	86 <sup>H6</sup>	12	104.8	104.8	40	3 x M10
24160100	mm	A6	165	106.375	62 <sup>H6</sup>	13.5	133.4	82.6	40	3 x M10
24160400	mm	A6	165	106.375	86 <sup>H6</sup>	13.5	133.4	104.8	40	3 x M10
24180100	mm	A8	210	139.719	62 <sup>H6</sup>	17	171.4	82.6	40	3 x M10
24180400	mm	A8	210	139.719	86 <sup>H6</sup>	17	171.4	104.8	40	3 x M10

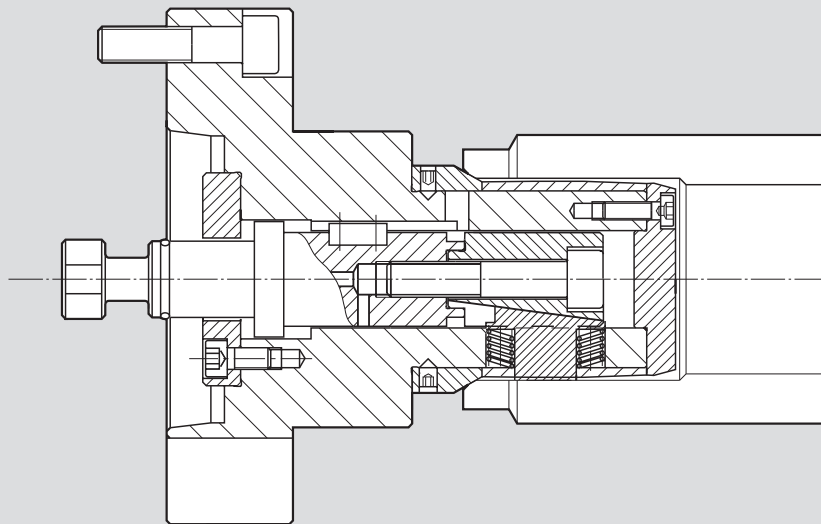
Appropriate adapter flanges	EM-A	EM-B
24150100 ISO-A5	1-2-3-4-5-6	0-1-2-3
24160100 ISO-A6		
24180100 ISO-A8		
24150400 ISO-A5	7-8-9-10-11	4
24160400 ISO-A6		
24180400 ISO-A8		

Besides our standard range, we offer special solutions for your applications

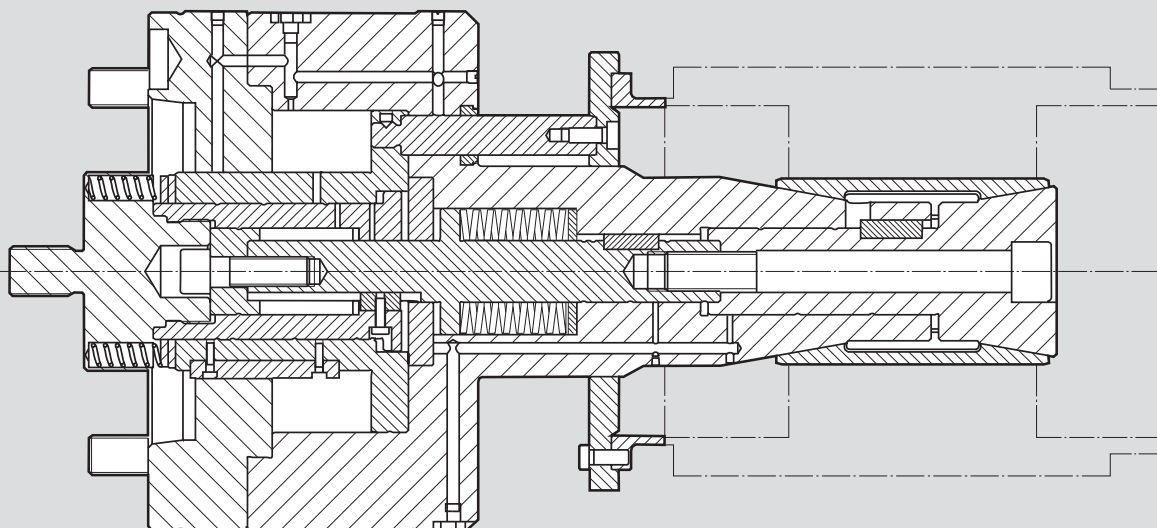
**Example:** Special expanding mandrel, sleeve design, on spindle and tailstock side for screw rotors



**Example:** Special mandrel segment design for tubes



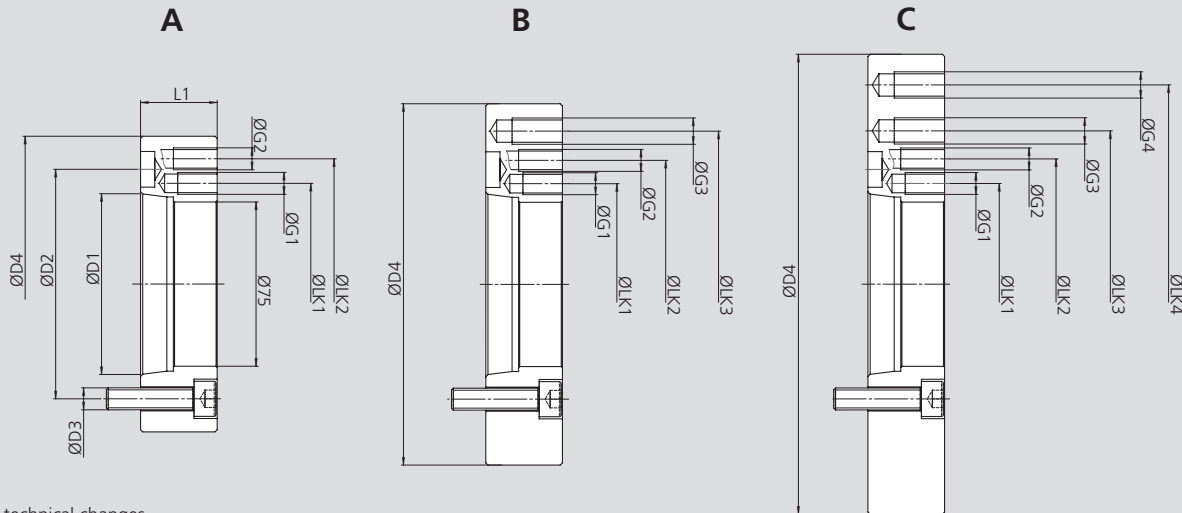
**Example:** Special expanding mandrel, double taper design with retractable stop, for clamping of stators



# Adapters

- EMX-P, EMX-F/FP, EMX-C have cylindrical mounting
- Adapters for DIN 55026 / ISO 702-1 / 702-4 spindle noses

ISO 702-1 / 702-4 for sleeve expanding mandrels

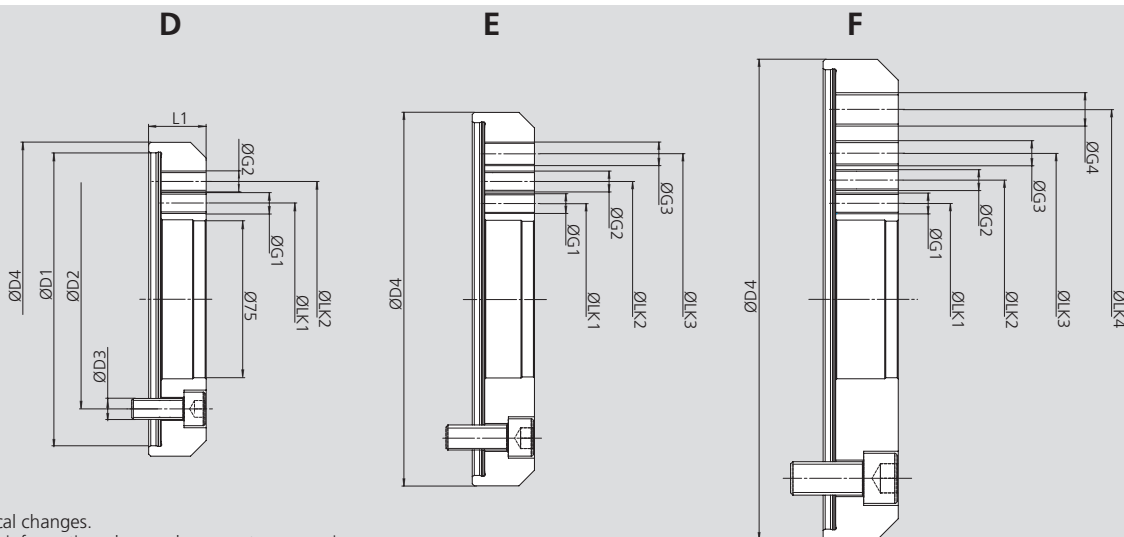


Subject to technical changes.  
For more detailed information please ask our customer service.

## Technical data

Adapter flange Id. No.	mm	Spindle nose ISO	D1	D2	D3	D4	L1	LK1	G1	LK2	G2	LK3	G3	LK4	G4
9000051	mm	A5	82.563	104.8	3 x M10	135	35	92	3 x M10	112	3 x M10	-	-	-	-
9000052	mm	A5	82.563	104.8	3 x M10	165	35	92	3 x M10	112	3 x M10	140	3 x M12	-	-
9000053	mm	A5	82.563	104.8	3 x M10	210	35	92	3 x M10	112	3 x M10	140	3 x M12	182	3 x M12
9000061	mm	A6	106.375	133.4	3 x M12	165	36	92	3 x M10	112	3 x M10	140	3 x M12	-	-
9000062	mm	A6	106.375	133.4	3 x M12	210	36	92	3 x M10	112	3 x M10	140	3 x M12	182	3 x M12
9000081	mm	A8	139.719	171.4	3 x M16	210	45	92	3 x M10	112	3 x M10	140	3 x M12	182	3 x M12

Appropriate adapter flanges	Spindle nose ISO	EMX-P	EMX-F/FP	EMX-C	Type
9000051	A5	0-1-2-3-4-5-6-7-8-9-10-11	1-2-3-4	1-2-3-4	A
9000052	A5	0-1-2-3-4-5-6-7-8-9-10-11	1-2-3-4-5	1-2-3-4-5	B
9000053	A5	0-1-2-3-4-5-6-7-8-9-10-11	1-2-3-4-5-6	1-2-3-4-5	C
9000061	A6	0-1-2-3-4-5-6-7-8-9-10-11	1-2-3-4-5	1-2-3-4-5	B
9000062	A6	0-1-2-3-4-5-6-7-8-9-10-11	1-2-3-4-5-6	1-2-3-4-5	C
9000081	A8	0-1-2-3-4-5-6-7-8-9-10-11	1-2-3-4-5-6	1-2-3-4-5	C



Subject to technical changes.  
For more detailed information please ask our customer service.

## Technical data

Adapter flange Id. No.	mm	Spindle nose ISO	D1	D2	D3	D4	L1	LK1	G1	LK2	G2	LK3	G3	LK4	G4
9000000141	mm	Z140	140	104.8	3 x M10	150	21.5	92	3 x M10	112	3 x M10	-	-	-	-
9000000171	mm	Z170	170	133.4	3 x M12	180	24	92	3 x M10	112	3 x M10	140	3 x M12	-	-
9000000221	mm	Z220	220	171.4	3 x M16	230	30	92	3 x M10	112	3 x M10	140	3 x M12	182	3 x M12

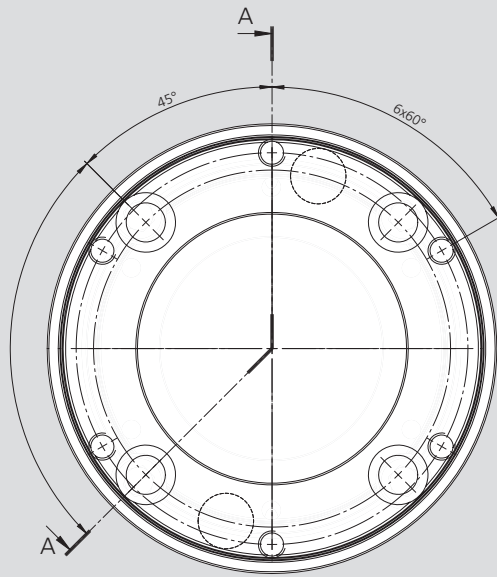
Appropriate adapter flanges	Spindle nose ISO	EMX-P	EMX-F/FP	EMX-C	Type
9000000141	Z140	0-1-2-3-4-5-6-7-8-9-10-11	1-2-3-4	1-2-3-4	D
9000000171	Z170	0-1-2-3-4-5-6-7-8-9-10-11	1-2-3-4-5	1-2-3-4-5	E
9000000221	Z220	0-1-2-3-4-5-6-7-8-9-10-11	1-2-3-4-5-6	1-2-3-4-5	F

# Adapters

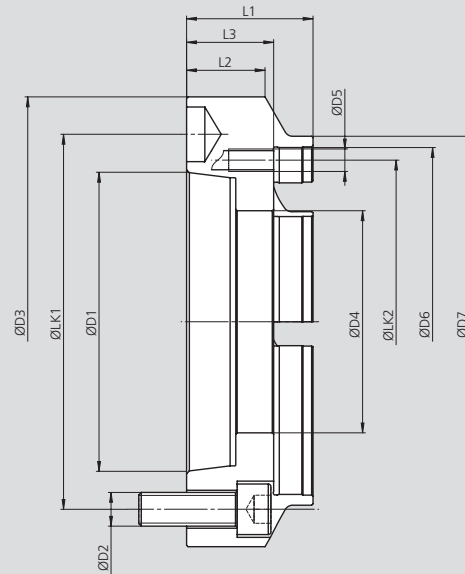
ISO-A for expanding mandrels

- Mandrels EMX-S have cylindrical mounting
- Adapters for DIN 55026 / ISO-A 702-1 / ISO-A 702-1 spindle noses

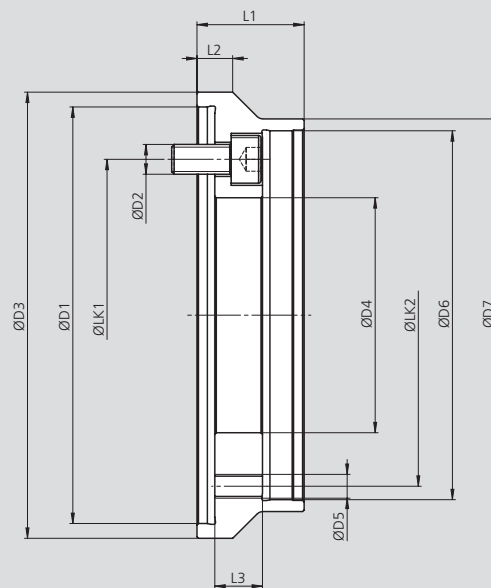
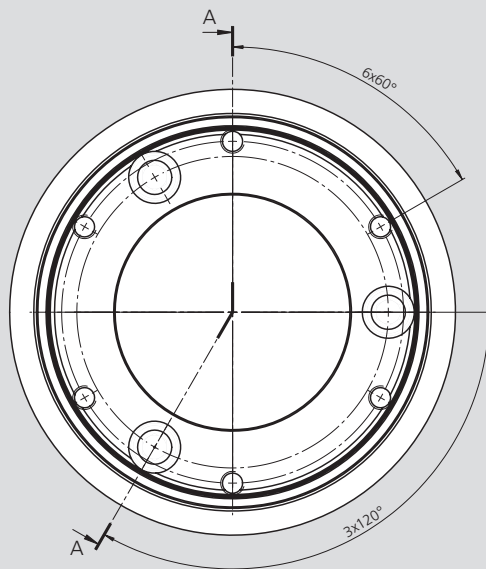
A



SECTION A-A



ZA



Subject to technical changes.  
For more detailed information please ask our customer service.

## Technical data

Flange Id. No.	Mandrel size		Spindle nose ISO 702-1 (A)	Spindle nose ISO 702-4 (ZA)	D1	LK1	D2	D3	D4	LK2	D5	D6	D7	L1	L2	L3
9600200005	EMX-S-1 / 2 / 3	mm	A5	-	82.563	104.8	4 x M10	132	79	115	6 x M8	124	D3	45	-	31
9600200006		mm	A6	-	106.375	133.4	4 x M12	160	79	115	6 x M8	124	132	45	28	31
9600200008		mm	A8	-	139.719	171.4	4 x M16	202	79	115	6 x M8	124	140	47	29	33
9600200140		mm	-	140	140	104.8	3 x M10	150	79	115	6 x M8	124	132	36	12	16
9600200170		mm	-	170	170	133.4	6 x M12	180	79	115	6 x M8	124	157	36	24.5	16
9604200005	EMX-S-4	mm	A5	-	82.563	104.8	4 x M10	157	79	137	6 x M8	147	D3	45	-	31
9604200006		mm	A6	-	106.375	133.4	4 x M12	157	102.5	137	6 x M8	147	D3	43	-	29
9604200008		mm	A8	-	139.719	171.4	4 x M16	202	103	137	6 x M8	147	157	47	17	33
9604200140		mm	-	140	140	104.8	3 x M10	157	80	137	6 x M8	147	D3	50	-	31
9604200170		mm	-	170	170	133.4	6 x M12	180	103	137	6 x M8	147	157	48	11.5	29