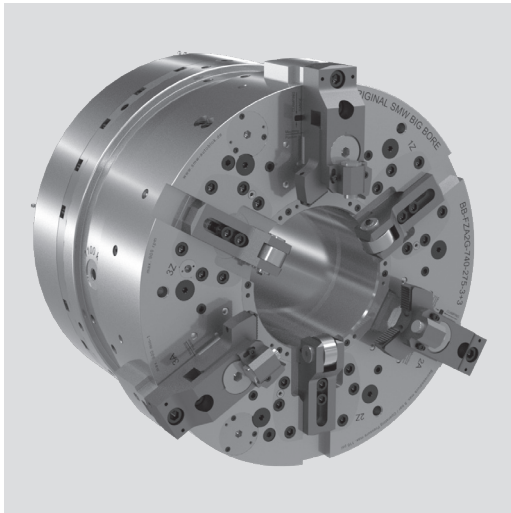


BIG BORE® BB-FZA2G

INCH SERRATION

Front-end pneumatic 6-jaw sequence chuck EXTRA large through-hole Ø 275 - 390 mm

- Chuck size 740 - 920
- 3 integrated centering jaws and 3 compensating jaws



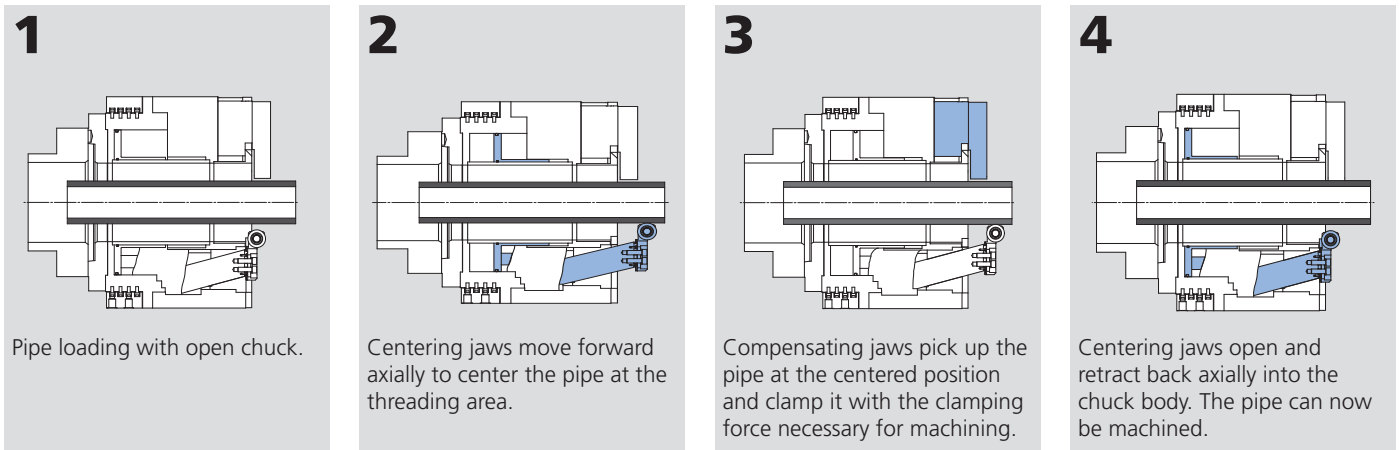
Application/customer benefits

- EXTRA long axial and radial stroke for centering jaws
- Adjustability of the axial centering position for pipe threading
- EXTRA long rapid and clamping stroke (1 1/2" total) for compensating jaws
- Stroke control for centering jaws
- Stroke control for each compensating jaw
- Pressure control

Technical features

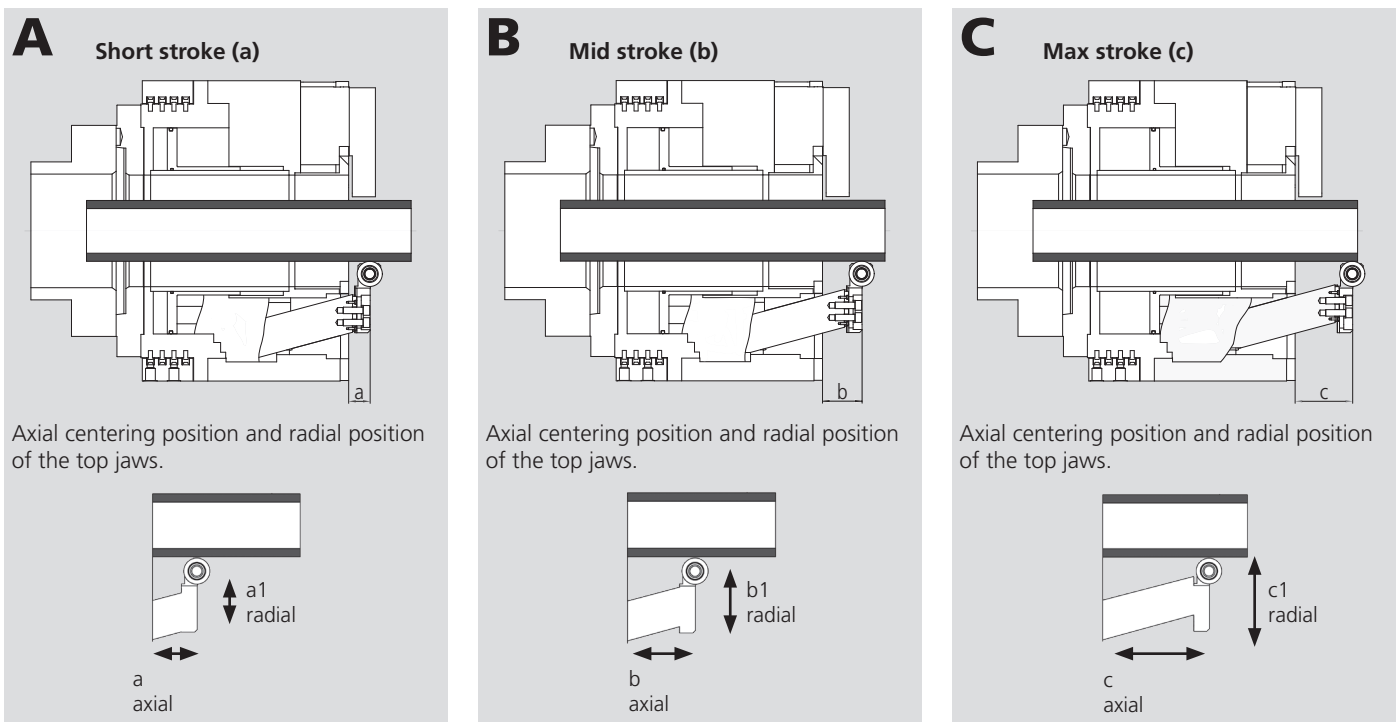
- 3+3 jaw air chuck with 3 integrated centering jaws and 3 compensating jaws
- Integrated centering jaws move axially forward to center the pipe exactly at the area to be threaded
- For external clamping only
- Fully automatic sequence is programmable
- EXTRA long jaw stroke
- Possibility to adjust the axial centering position through the radial position of the centering jaws

Machining of bent pipe with chuck with integrated centering jaws:



Adjustability of the axial centering position

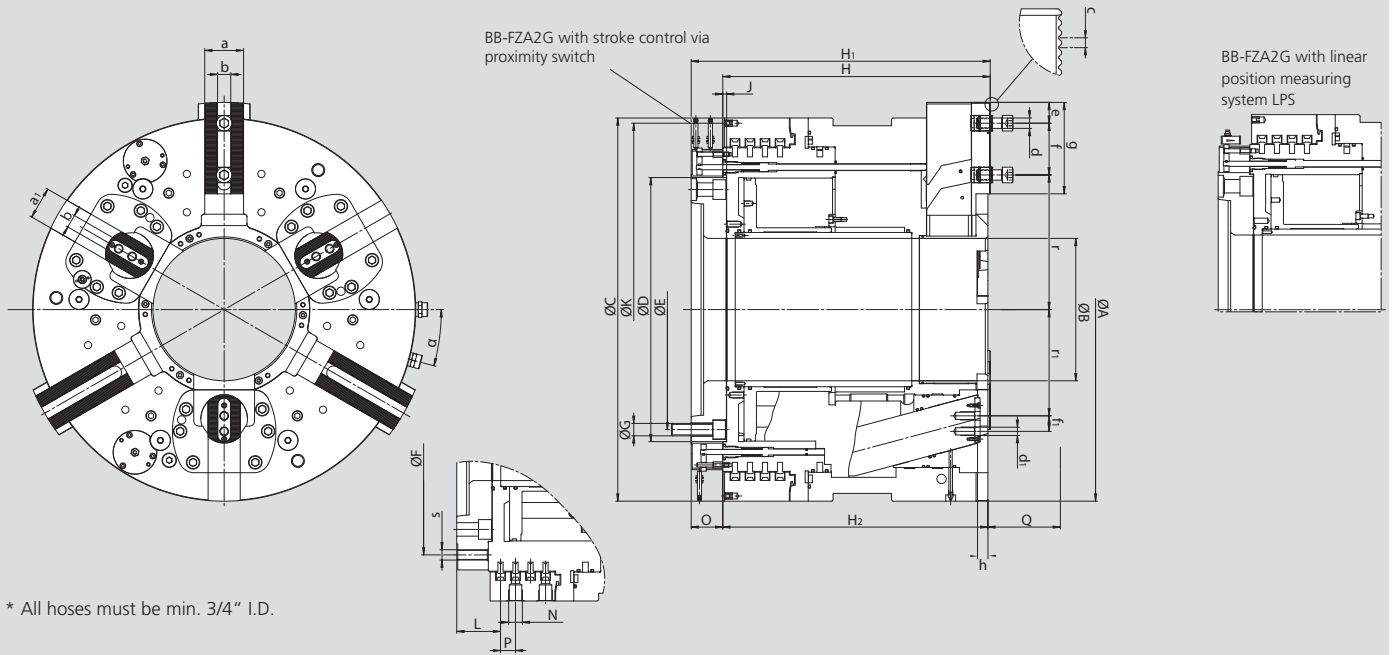
By changing the radial position of the top jaws, the axial centering position can be changed. The axial centering position is dependent from the radial adjustment of the top jaws.



BIG BORE® BB-FZA2G

INCH SERRATION

■ Main dimensions and technical data



* All hoses must be min. 3/4" I.D.

Subject to technical changes.

For more detailed information please ask our customer service.

SMW-AUTOBLOK Type			BB-FZA2G 740-275-A20	BB-FZA2G 800-330-A20	BB-FZA2G 920-390-A20
Id. No.			054159	054300	054228
Id. No. with LPS			054698	054692	054768
Chuck diameter	A	mm	740	800	920
Through-hole	B	mm	275	330	390
	C	mm	740	800	920
	D	mm	510	510	550
	E	mm	463.6	463.6	463.5
	F	mm	562	615	724
	G	mm	M24	M24	M24
Chuck height	H	mm	516.5	516.5	546.5
	H1	mm	577.5	577.5	607.5
	H2	mm	512	512	542
	J	mm	7.5	7.5	7.5
	K	mm	720 / 6 x M8	780 / 6 x M8	890 / 6 x M8
	L	mm	84.5	84.5	86.5
Connection for air hoses	N	inch	G 3/4"	G3/4"	G 3/4"
	O	mm	61	61	61
Centering jaws axial stroke	P	mm	3x29	3x29	3x31
	Q	mm	140	140	160
	a	mm	75	75	75
	a1	mm	62	62	62
	b	mm	25.5 H7	25.5 H7	25.5 H7
	c	inch	3/32" x 90°	3/32" x 90°	3/32" x 90°
Jaw mounting bolts	d	mm	M20	M20	M20
Jaw mounting bolts	d1	mm	M16	M16	M16
Min.	e	mm	30	30	30
Max.	f	mm	100	100	135
	f1	mm	30	30	30
	g	mm	176.6	176.6	190
Serration to face of chuck	h	mm	19	19	19
	r	mm	260	287.5	321
	r1	mm	205.2	232.7	270.3
	s	mm	M20	M20	M24
	α	deg.	15	15	15
Speed max.		r.p.m.	900	750	600
Gripping force compensating jaws at 6 bar		kN (lbf)	83 (18660)	83 (18660)	137 (30799)
Gripping force centering jaws at 6 bar		kN (lbf)	100 (22481)	114 (25628)	102 (22930)
Jaw stroke compensating jaws total		mm (inch)	38.1 (1 1/2")	38.1 (1 1/2")	38.1 (1 1/2")
Rapid stroke		mm (inch)	27.2 (1.07")	27.2 (1.07")	27.2 (1.07")
Clamping stroke		mm (inch)	10.9 (0.43")	10.9 (0.43")	10.9 (0.43")
Jaw stroke centering jaws max.		mm (inch)	37.5 (1.48")	37.5 (1.48")	42.7 (1.68")
Air consumption centering at 6 bar (87psi) max.		liter	92	92	142
Air consumption compensating at 6 bar (87psi) max.		liter	30	30	54
Weight (without top jaws)		kg (lbs)	1140 (2513)	1350 (2976)	1850 (4079)
Operating pressure min. / max.		bar (psi)	2 / 8 (29 / 116)	2 / 8 (29 / 116)	2 / 8 (29 / 116)
Moment of inertia		kg·m²	88	121	230