

# Overview Pipe

## Customer's OCTG product:

- Straight pipe
- Bent pipe

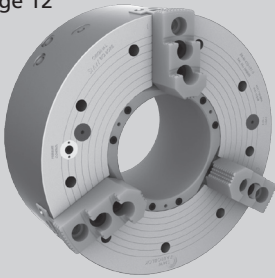
### CHUCK

### APPLICATION

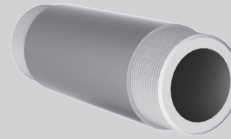
### OCTG PRODUCT

### CUSTOMER BENEFITS

**BB-N**  
Page 12

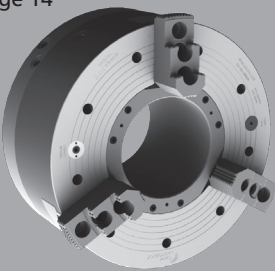


Threading of straight pipe with the original SMW Big Bore Type BB-N.

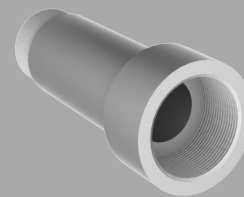


- **Quick jaw movement** more pipe per hour
- Can be used for other work pieces besides piping
- O.D. and I.D. clamping

**BB-N-ES**  
Page 14

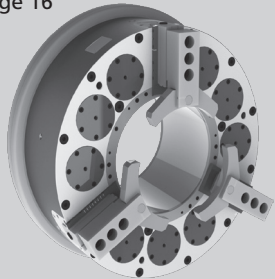


Threading of straight pipe with upset ends with the original SMW Big Bore Type BB-N-ES.

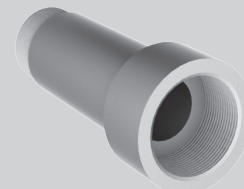
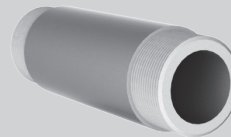


- **Quick jaw movement** more pipe per hour
- Large jaw stroke for easy loading of pipe and less danger of damaging threads when unloading

**BB-SC**  
Page 16

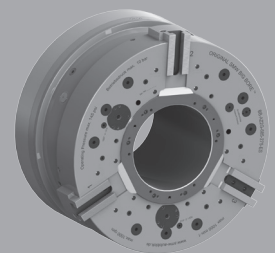


High production **spring clamp** chuck for threading of straight pipe with or without upset ends with the original SMW Big Bore Type BB-SC.

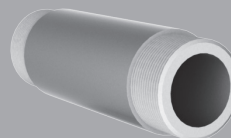
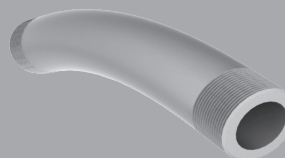


- **Full jaw stroke in 2 seconds** for highest productivity
- Fully sealed/low maintenance for highest availability of the machine
- Safe clamping of pipe even in longer machining processes with spring clamp technology

**BB-AZ2G**  
Page 18

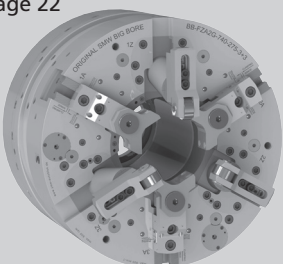


Threading of straight and bent pipe with the original SMW Big Bore Type BB-AZ2G.

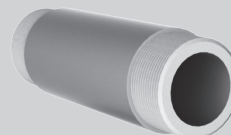
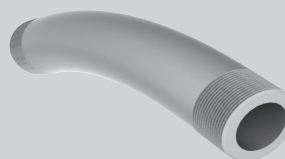


- **Self centering or compensating clamping** for universal use
- Quick jaw movement
- External centering device needed when used in compensating mode
- O.D. clamping only

**BB-FZA2G**  
Page 22



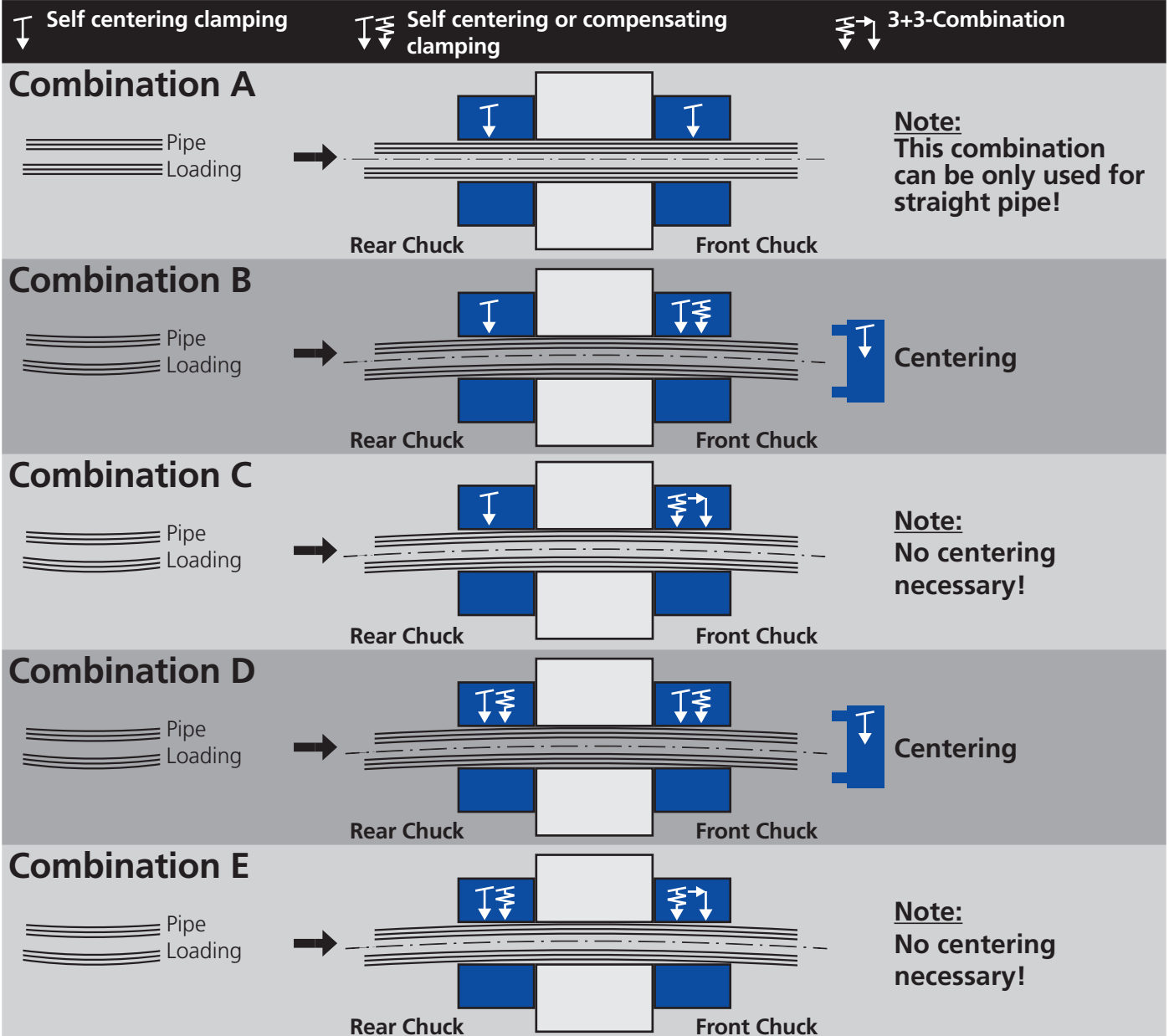
Threading of straight and bent pipe with integrated centering jaws with the original SMW Big Bore Type BB-FZA2G.



- **Integrated centering jaws for the pipe** = no external centering device needed
- Quick jaw movement
- Fully automatic programmable cycle

# Pipe Clamping


# Recommended Combinations



## Respective chuck matrix:

Self centering clamping	Self centering or compensating clamping	3 jaw + 3 jaw combination
 <b>BB-N/ BB-N-ES</b> Page 12/14	 <b>BB-AZ2G</b> Page 18	 <b>BB-FZA2G</b> Page 22
 <b>BB-SC</b> Page 16		

## Centering options:

  <b>Chuck CC</b> Page 20	<b>Turret</b> by customer
--	------------------------------