

## CHUCK

## APPLICATION

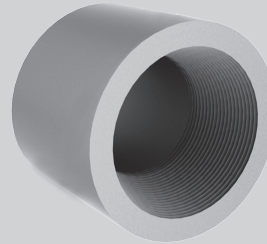
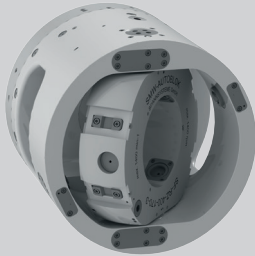
## OCTG PRODUCT

## CUSTOMER BENEFITS

**SF-RZ**  
Page 28

**NEW**

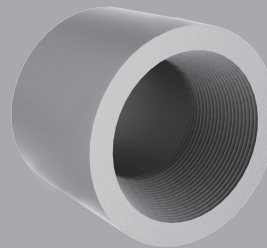
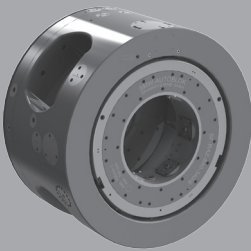
Hydraulic ring indexing chuck for threading of couplings in **1 set up** with the original SMW Type SF-RZ (3 jaw self centering clamping).



- **3 jaw self centering clamping**
- **Quick jaw movement**  
more couplings per hour
- Compact design and light weight
- Easy retrofit on existing machines

**SF-RAZ**  
Page 30

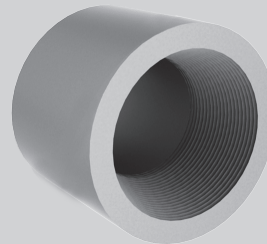
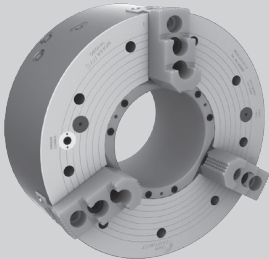
Hydraulic ring indexing chuck for threading of couplings in **1 set up** with the original SMW Type SF-RAZ (6 jaw clamping: 3 jaw self centering, 3 jaw compensating).



- **6 jaw clamping for low deformation of coupling**
- **Quick jaw movement**  
more couplings per hour
- Rigid strong design and highest accuracy for all premium couplings

**BB-N**  
Page 32

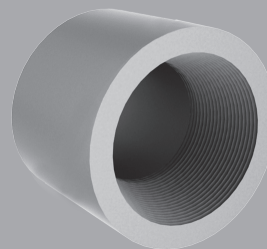
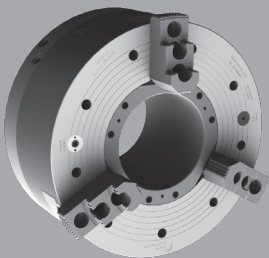
Threading of couplings in **2 set ups** with the original SMW Big Bore Type BB-N (3-jaw clamping).



- **Quick jaw movement**  
more couplings per hour
- Can be used for other work pieces besides coupling
- O.D. and I.D. clamping

**BB-N ES**  
Page 34

Threading of couplings in **2 set ups** with the original SMW Big Bore Type BB-N ES (3-jaw clamping).



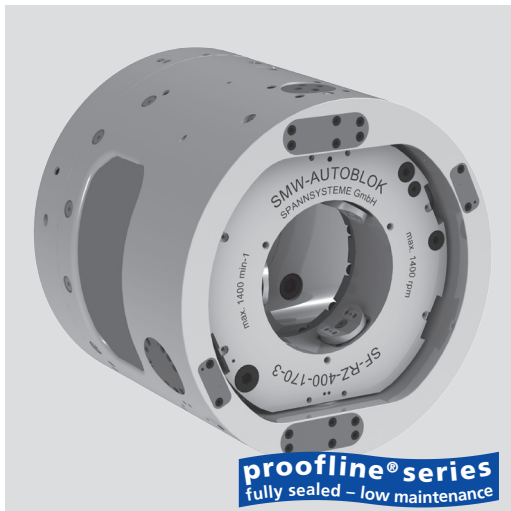
- **Quick jaw movement**  
more couplings per hour
- Large jaw stroke for easy loading of couplings

# SF-RZ

## 2 Position hydraulic ring indexing chuck

- 3 self centering jaws
- large evacuation windows for easy chip flow
- fully automatic and controlled indexing

**NEW**



### Application/customer benefits

- Machining of couplings up to 5 1/2" in one set up
- Indexing 180°
- 3 self centering jaws external clamping
- Compact design and light weight
- Standard mounting for easy retrofit on existing machines

### Technical features

- Hydraulic operated, automatic ring indexing chuck
- All functions controlled by proximity switches
- Extremely accurate and rigid indexing mechanism
- Optional: pendulum clamping inserts, central coolant supply

### Standard equipment

Chuck with mounting bolts

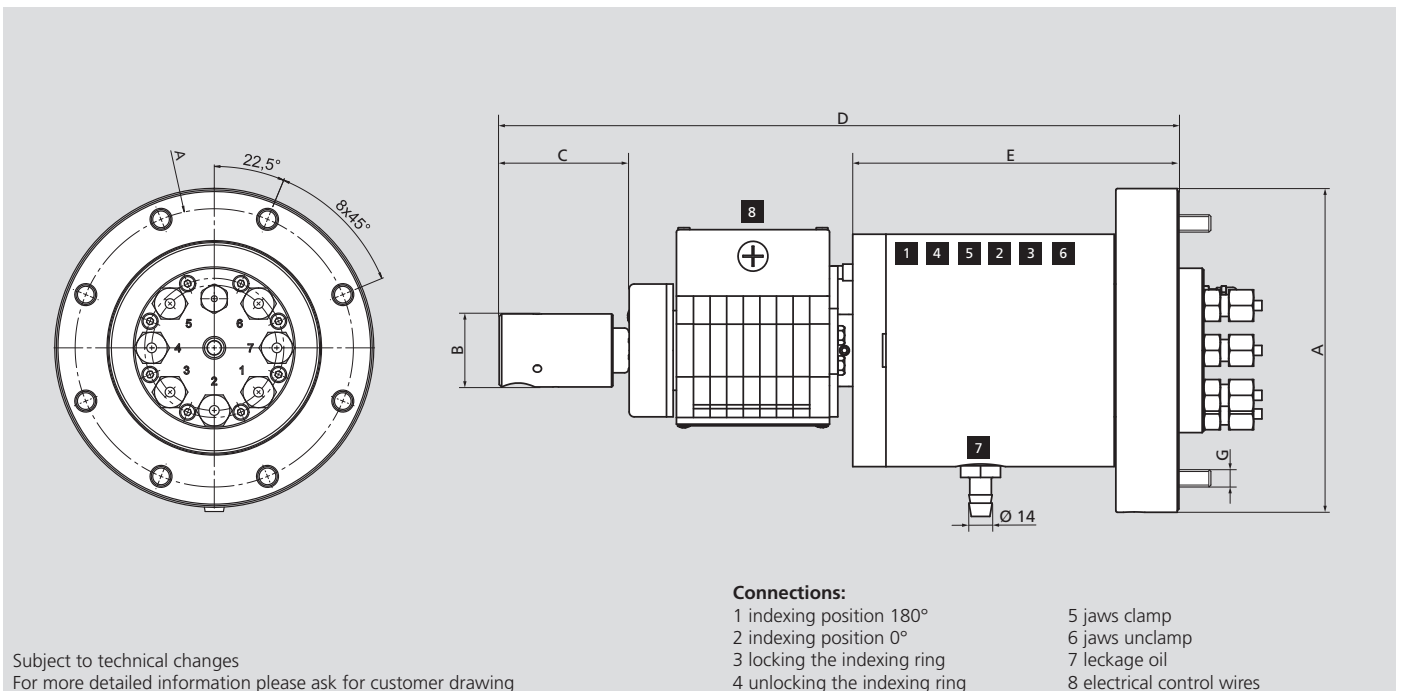
### Ordering example

SF-RZ 400

### Accessories

7-way oil distributor  
Connection kit for coolant supply

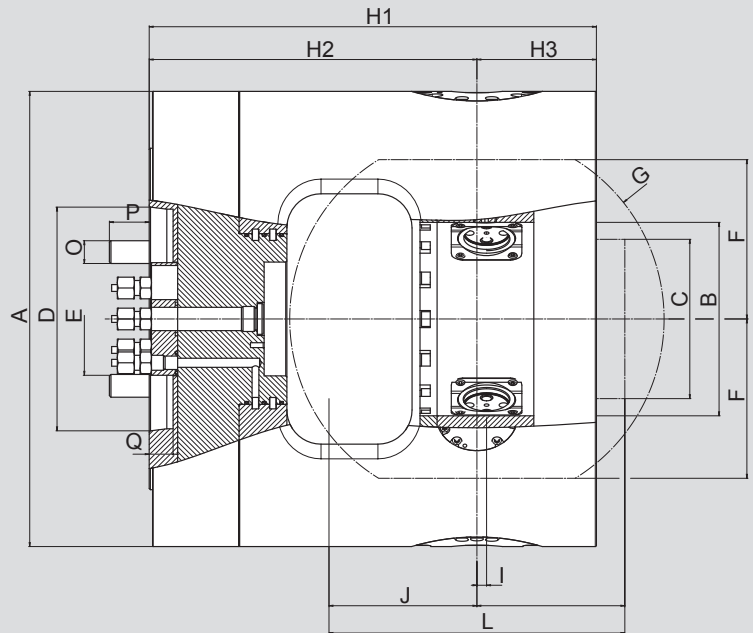
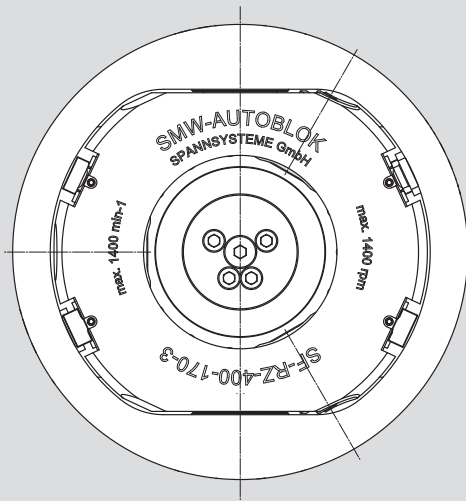
## MDV 65 7-way oil distributor



SMW-AUTOBLOK Type			MDV 65
Id. No.			045920
	A	mm	195
	B	mm	44
	C	mm	78.3
	D	mm	331.2
	E	mm	196.5
	F	mm	170
	G	mm	8xM12
Max. speed		r.p.m.	1400
Weight		kg	28

For exact position of the connecting ports, please ask for a customer drawing.  
All ports (1-6) are G 3/8".

## Main dimensions and technical data



Subject to technical changes.  
For more detailed information please ask for customer drawing.

SMW-AUTOBLOK Type			SF-RZ 400
Id. No.			054394
Chuck O.D.	A	mm	400
Indexing ring I.D.	B	mm	170
Max. workpiece O.D.	C	mm	140
Spindle mounting	D		A11
Connection flange O.D.	E	mm	99
Height indexing ring	F	mm	140
Swing indexing ring	G	mm	329
	H1	mm	393
	H2	mm	288
Indexing axis	H3	mm	105
Jaw axis to indexing axis	I	mm	8.5
	K	mm	130
Max. length of workpiece	L	mm	260
Clamping stroke	M	mm	5.7
Mounting bolts	O	mm	M20
	P	mm	35
	Q	mm	21
Max. speed		r.p.m.	1400
Max. pressure		bar	50
Max. clamping force		kN	120
Weight		kg	225
Moment of inertia		kg·m <sup>2</sup>	6